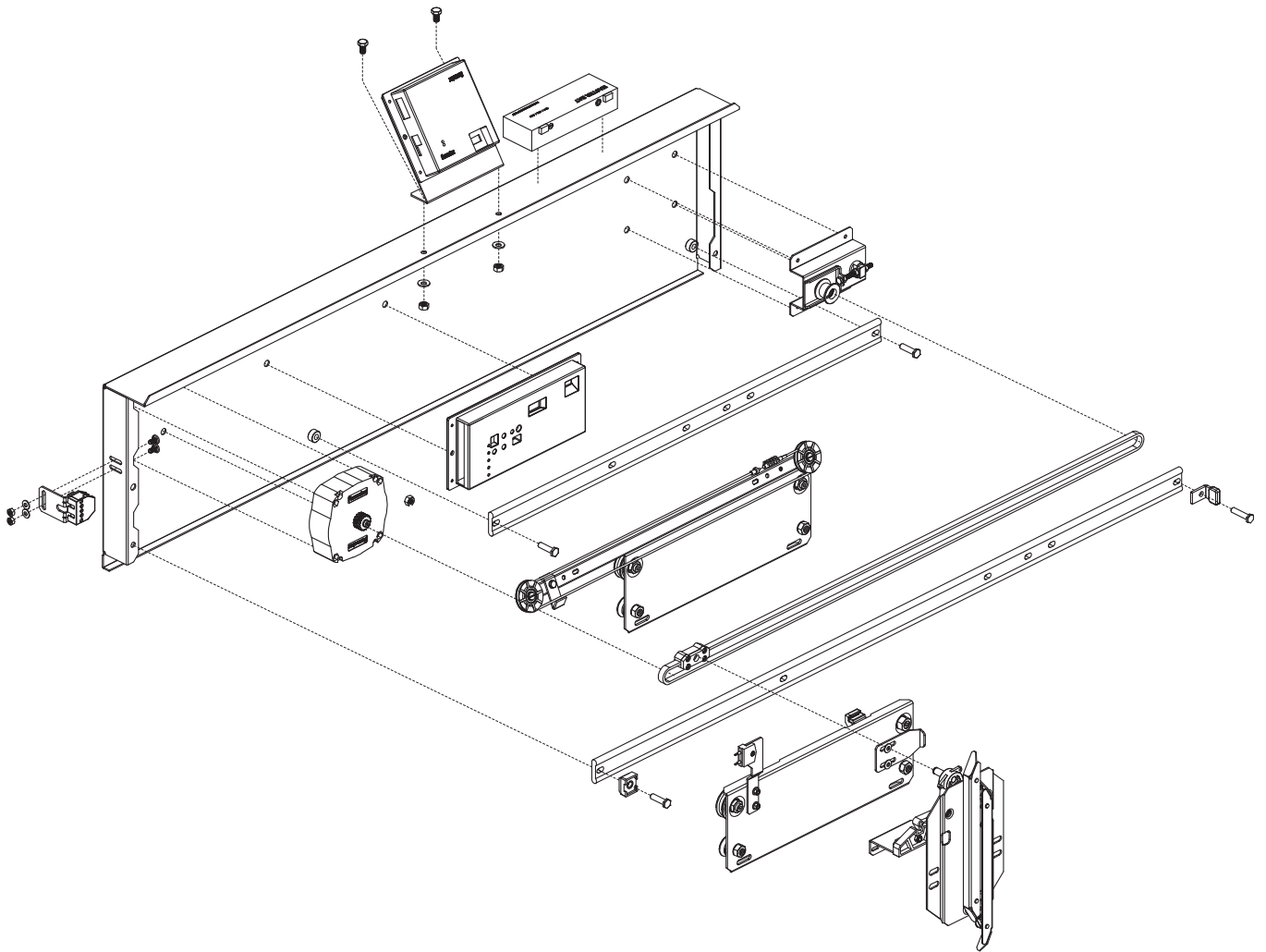


# 40/10 PM SPARE PARTS

Automatic horizontal sliding car door



Multimedia design and production by Klefer.

KLEFER S.A.

KILKIS Business Park 61100

KILKIS (GREECE)

Tel.: +30 23410 75730 - 2

Email: [commercial@klefer.com](mailto:commercial@klefer.com)

General Commercial Register (GEMI): 014504535000

National Producers Register Nr.: 2581



- Spare part in stock: Available with a minimal period of delivery.



- Spare parts to be manufactured: Need to be fabricated and therefore requires a longer delivery period.

Klefer reserves the right to modify the specification and price of the products in this catalogue without prior notice.

Rate revision according version.

The rates are valid except for typographical mistakes.

The price of packaging is not included.

IVA or VAT not included.

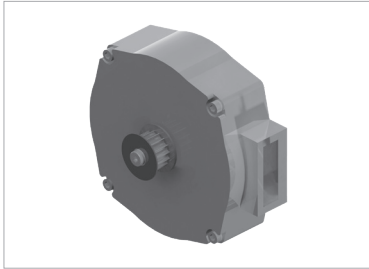
# 1.1

## DOOR OPERATOR

Traction parts



### CMT Motor



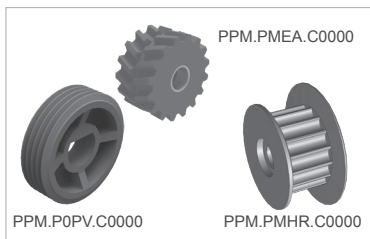
Code	Description
CMT.PME041	With encoder and RPP pulley (From 20/02/2019).
CMT.PME065	With encoder and Eagle pulley (Until 15/02/2019).
CMT.PME055	IP54 with encoder and RPP pulley. (From 20/02/2019).

### VMT Encoder



Code	Description
VMT.PMEN.C0000	Encoder (PM Motor).

### PPM Motor pulley



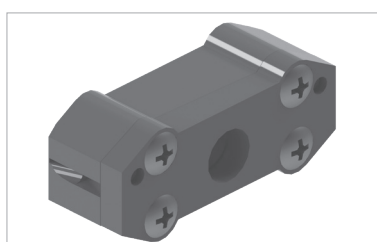
Code	Description
PPM.PMEA.C0000	Eagle model.
PPM.PMHR.C0000	HTD / RPP model.

## HCO Separator



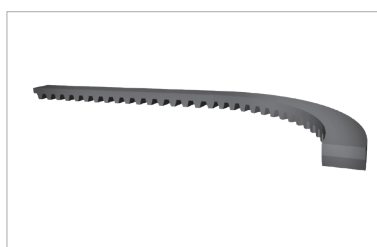
Code	Description
HCO.P0SP.C0000.0000	9 mm separator.

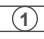


## CHT Toothed belt base assembly



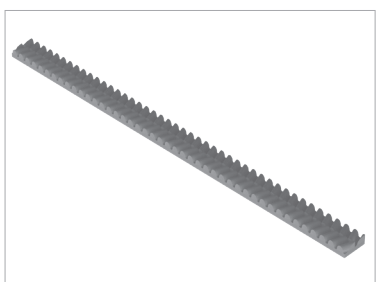
Code	Description
CHT.PMEA.C0000	Eagle toothed belt base assembly.
CHT.VFRF.C0000	HTD 5M & RPP5 toothed belt base assembly (Reinforced).

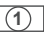


## BHT RPP5 toothed belt by opening door



Code	Description
BHT.10RP.CC200 	C2.
BHT.10RP.CT200 	T2.
 To complete this code, see annexe 1 (Clear opening table). The price shown is valid for CO 800 mm.	

## BHT Eagle toothed belt opening door




Code	Description
BHT.10EA.CC200 	C2.
BHT.10EA.CT200 	T2.
 To complete this code, see annexe 1 (Clear opening table). The price shown is valid for PL 800 mm.	

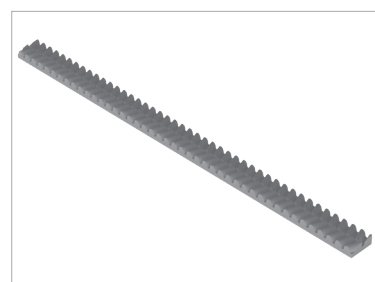
## BHT RPP5 toothed belt by meters




Code	Description
BHT.10RP.C0000 <input type="text" value="Quantity"/>	Toothed belt RPP5.

 In Quantity field, show the meters needed preceded by 0 until complete 4 figures.  
The price shown is valid for one meter.

## BHT Eagle toothed belt by metres



Code	Description
BHT.10EA.C0000 <input type="text" value="Quantity"/>	Eagle Toothed belt.

 In Quantity field, show the meters needed preceded by 0 until complete 4 figures.  
The price shown is valid for one meter.

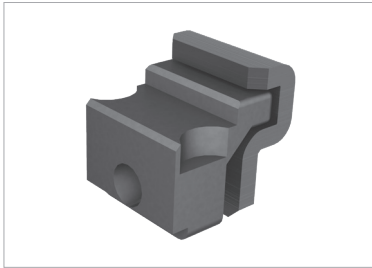
# 1.2

## DOOR OPERATOR

Synchronization

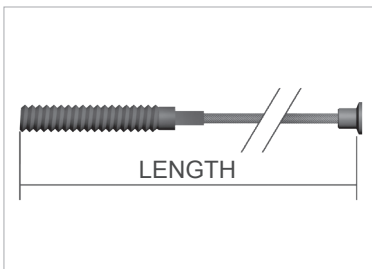


### CAM Cable fastener assembly




Code	Description
CAM.00AL.00000	Aluminium sheet cable fastener assembly.

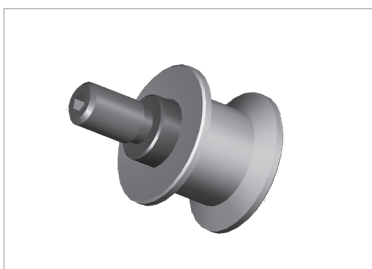
### PCA Synchronization wire



Code	Description
PCA.0000. <span style="border: 1px solid black; padding: 0 2px;">2</span>	Synchronization wire.

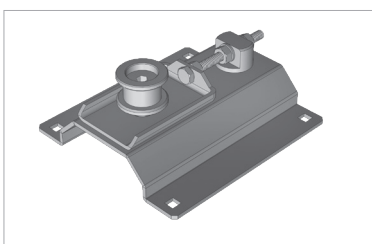
 To complete this code, see annex 2 (Shynchronization wire length by clear opening table). The price shown is valid for one metre.

### PPR Idle pulley



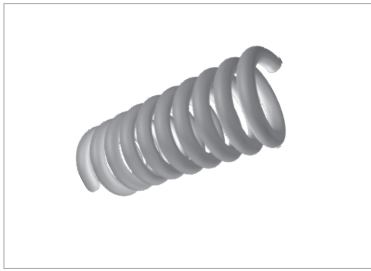
Code	Description
PPR.VF00.C0000	Idle pulley.

### CPR Idle pulley tensor assembly



Code	Description
CPR.1054.CC200	C2. 54 mm sill.
CPR.1013.CT300	T2. 70 mm sill.
CPR.1090.CC400	T2. 90 mm sill.

**RCA**  **Tensor for spring synchronization wire**



Code	Description
RCA.0000.C0015.00330.925FG.0250	Tensor spring for synchronization wire.

# 1.3

## DOOR OPERATOR

Acting parts



### CSK



#### Clutch assembly

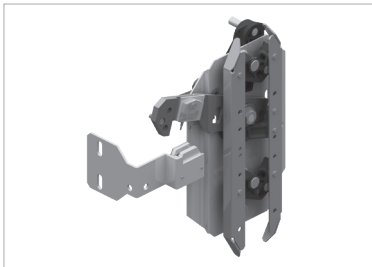


Code	Description
CSK.P0IZ.CC200	C2. Symmetric.
CSK.10A1.CC200	C2. Operation zone 100 mm. Symmetric.
CSK.P0AA.CC200	C2. Pre-opening. Symmetric.
CSK.P000.CD000	T2. Right opening. Symmetric.
CSK.P000.CI000	T2, C2 with reduction. Left opening. Symmetric.
CSK.1070.CD200	T2. 70 mm sill. Right opening. Symmetric.
CSK.1070.CI200	T2. 70 mm sill. Left opening. Symmetric.
CSK.107A.CD200	T2. 70 mm sill. Pre-opening. Right opening. Symmetric.
CSK.107A.CI200	T2. 70 mm sill. Pre-opening. Left opening. Symmetric.
CSK.10A1.CD200	T2. Operation zone 100 mm. Right opening. Symmetric.
CSK.10A1.CI200	T2. Operation zone 100 mm. Left opening. Symmetric.
CSK.1071.CD200	T2. 70 mm sill. Operation zone 100 mm. Right opening. Symmetric.
CSK.1071.CI200	T2. 70 mm sill. Operation zone 100 mm. Left opening. Symmetric.
CSK.10IP.CD200	T2. IP54 protection. Right opening. Symmetric.
CSK.10IP.CI200	T2. IP54 protection. Left opening. Symmetric.
CSK.10AA.CD200	T2. Pre-opening. Right opening. Symmetric.
CSK.10AA.CI200	T2. Pre-opening. Left opening. Symmetric.

### CDL



#### Contact and lock clutch assembly

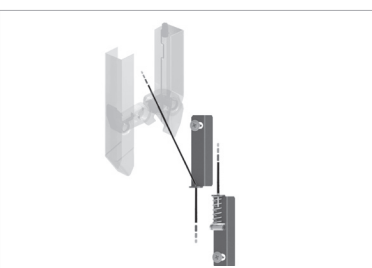


Code	Description
CDL.1000.CC200	C2 CO>800. Symmetric.
CDL.1000.CD200	T2. Right opening. Symmetric.
CDL.1000.CI200	T2. Left opening. Symmetric.
CDL.1070.CD000	T2. 70 mm sill. Right opening. Symmetric.
CDL.1070.CI000	T2. 70 mm sill. Left opening. Symmetric.
CDL.107A.CD000	T2. 70 mm sill. Pre-opening. Right opening. Symmetric.
CDL.107A.CI000	T2. 70 mm sill. Pre-opening. Left opening. Symmetric.
CDL.10B1.CC200	C2 CO:600-800. Symmetric.
CDL.P0AA.CD000	T2. Pre-opening. Right opening. Symmetric.
CDL.P0AA.CI000	T2. Pre-opening. Left opening. Symmetric.
CDL.10IP.CC200	C2 CO>800. IP54. Symmetric.
CDL.10IP.CD200	T2. IP54. Right opening. Symmetric.
CDL.10IP.CI200	T2. IP54. Left opening. Symmetric.


### KDM



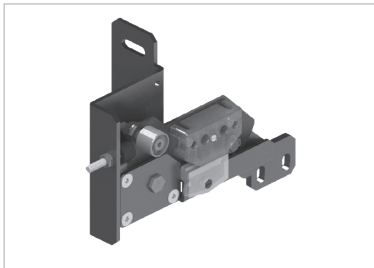
#### Manual unlocking device



Code	Description
KDM.10.00.C.0D.000. <b>PH</b>	Right opening.
KDM.10.00.C.0I.000. <b>PH</b>	Left & central opening.
KDM.10.SE.C.0D.000. <b>PH</b>	Right opening. Cooperation with semiautomatic.
KDM.10.SE.C.0I.000. <b>PH</b>	Left & central opening. Cooperation with semiautomatic.

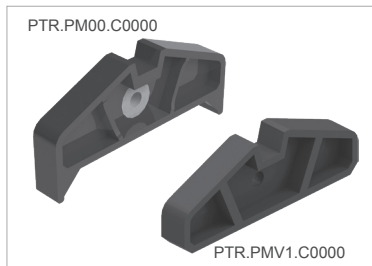
 .To complete this code, **PH** refers to Panel Height

## KEL Cam locking device



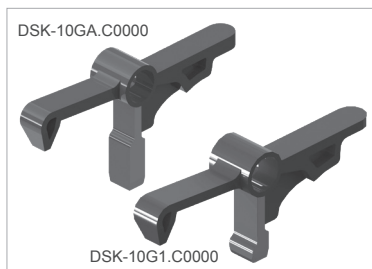
Code	Description
KEL.1000.CD200	Cam locking device. Right hand.
KEL.1000.CI200	Cam locking device. Left hand.

## PTR Stopping retainer



Code	Description
PTR.PM00.C0000	Stopping retainer. From 2013.
PTR.PMV1.C0000	Stopping retainer. Until 2013.

## DSK Pulling trigger



Code	Description
DSK.0GA.C0000	Pulling trigger. From 2013.
DSK.10G1.C0000	Pulling trigger. Until 2013.

## RTR Stopping retainer spring



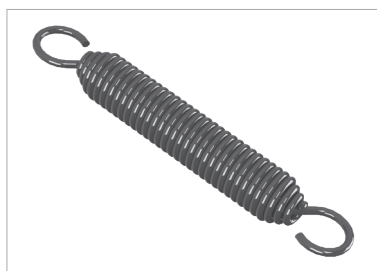
Code	Description
RTR.0000.C0008.00450.910ZN.0240	Clutch pulling trigger spring tensor.

## REM Spring



Code	Description
REM.OC00.C0035.01002.800FG.0420	For models with reduction (42 mm).

## RSK Spring



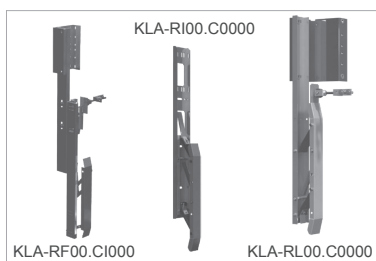
Code	Description
RSK.00GA.TA010.00000.720PV.0300	For clutch with locking device.

## DPL Spring seating



Code	Description
DPL.ECAS.P0000	Spring seating. For models with reduction.

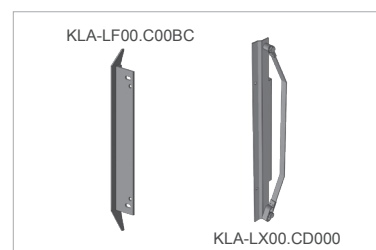
## KLA Drive retractable cam kit



Code	Description
KLA.RF00.CD000 <input checked="" type="checkbox"/>	Frontal. Right hand (For left opening, hinged semiautomatic doors).
KLA.RF00.CI000 <input checked="" type="checkbox"/>	Frontal. Left hand (For right opening, hinged semiautomatic doors).
KLA.RI00.C0000 <input checked="" type="checkbox"/>	Inverted lateral retractable.
KLA.RL00.C0000 <input checked="" type="checkbox"/>	Lateral retractable.
KLA.RIA1.C0000 <input checked="" type="checkbox"/>	Inverted lateral retractable, acting zone 100 mm.

! Code X: Drive height in mm from the centre of the cam to the sill. If standard (1.850 mm), indicate 1850. For other heights increase in 100 by 100 mm.

## KLA Drive fixed cam kit



Code	Description
KLA.LF00.C00BC	Fixed.
KLA.LX00.CD000	Right flexible.
KLA.LX00.CI000	Left flexible.
KLA.LO00.C0000	Fixed type O.
KLA.LFCA.CC000	Fixed. Type C. Central opening.
KLA.LFA1.C00BC	Fixed. Unlocking 100 mm.

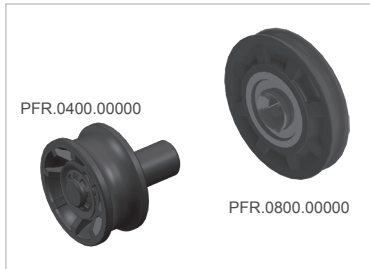
# 1.4

## DOOR OPERATOR

### Carriages

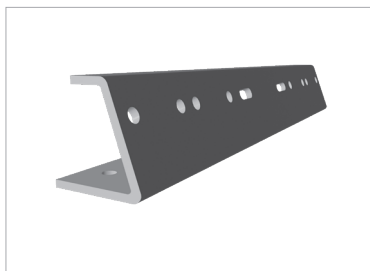



#### PFR Wheel




Code	Description
PFR.0400.00000	Eccentric. PFR-04. Ø 33 mm.
PFR.0800.00000	Synchronization. PFR-08. External Ø 47 mm. Internal Ø 6.2 mm.
PFR.6200.00000	Concentric. PFR-62. Ø 48 mm.

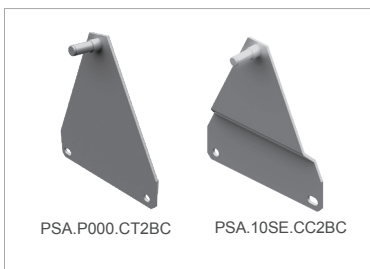
#### PBR Wheel carrier arm



Code	Description
PBR.4000.0T2BC 	T2.

 To complete this code, see annexe 1 (Clear opening table). The price shown is valid for PL 800 mm.

#### PSA Carriage pulling support



Code	Description
PSA.10SE.CC2BC	C2.
PSA.P000.CT2BC	T2.
PSA.10S7.CT2BC	T2. 70 mm sill.

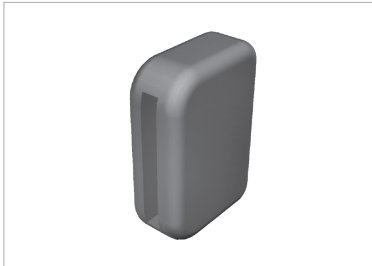
# 1.5

## DOOR OPERATOR

Others

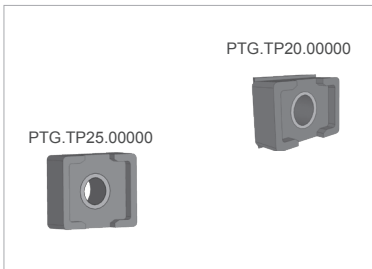


### PTF End stroke stop



Code	Description
PTF.0000.C0000	End stroke stop.

### PTG Rubber stop assembling



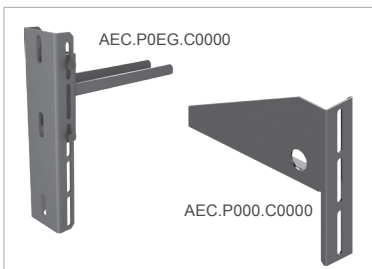
Code	Description
PTG.TP20.00000	20 x 30 mm stop.
PTG.TP25.00000	25 x 30 mm stop.

### UHT Belt regulation tool



Code	Description
UHT.VF00.C0000	Belt regulation tool.

### AEC Fastening bracket set



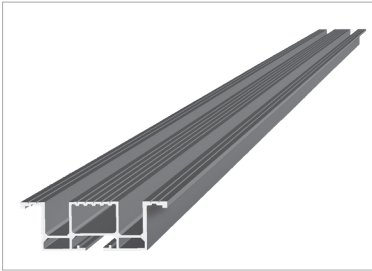
Code	Description
AEC.P0E8.C0000	Adjustable mounting bracket. Model: ER-80. CH+60 ≤ Car operator height ≤ CH+103 (2 units).
AEC.P000.C0000	Fix mounting bracket. Model: EF. CH+175 ≤ Car operator height ≤ CH+216 (2 units).
AEC.P0EG.C0000	Adjustable mounting bracket. Model: EG. CH+264 ≤ Car operator height ≤ CH+410 (2 units).
AEC.P0ER.C0000	Adjustable fixation bracket. Model: ER. CH+104 ≤ Car operator height ≤ CH+174 and CH+217 ≤ Car operator height ≤ CH+263 (2 units).
AEC.P0GP.C0000	Adjustable fixation bracket. Model: EG-Plus. CH+264 ≤ Car operator height ≤ CH+410 (2 units).
AEC.P0RP.C0000	Adjustable fixation bracket. Model: ER-Plus. CH+104 ≤ Car operator height ≤ CH+174 and CH+217 ≤ Car operator height ≤ CH+263 (2 units).

# 2


## ACCESSORIES



### PPS Sill

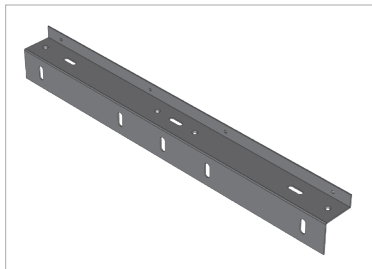


Code	Description
PPS. <input type="text" value="14"/> . <input type="text" value="3"/> . CC2. <input type="text" value="1"/>	C2.
PPS. <input type="text" value="14"/> . <input type="text" value="3"/> . CR2. <input type="text" value="1"/>	T2. Right opening.
PPS. <input type="text" value="14"/> . <input type="text" value="3"/> . CL2. <input type="text" value="1"/>	T2. Left opening.
PPS. <input type="text" value="14"/> . <input type="text" value="3"/> . CT2. <input type="text" value="1"/>	T2. CO: 700, 800, 900. EN 81-20/50.


 For sill without dust holes in telescopic doors the code is completed with T. (For either Left or Right opening, sill is the same).

To complete this code, see annex 1 (Clear opening table), annex 3 (Sill options) and annex 14 ( Sill materials, finishes and dimension table). The price shown is valid for PL 800 mm.

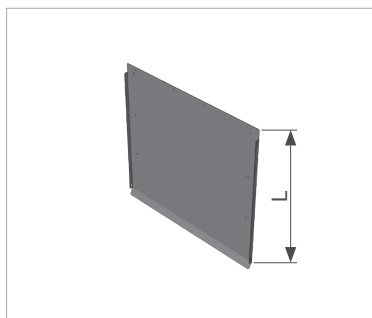
### PAC Sill support




Code	Description
PAC.CO54.CC2IM <input type="text" value="1"/>	For 54 mm sill, with evacuation slots.
PAC.HM54.CC2IM <input type="text" value="1"/>	For 54 mm solid iron sill, with evacuation slots.
PAC.CO90.CT2IM <input type="text" value="1"/>	For 90 mm sill, with evacuation slots.
PAC.HM90.CT2IM <input type="text" value="1"/>	For 90 mm solid iron sill, with evacuation slots.

 To complete this code, see annexe 1 (Clear opening table). The price shown is valid for PL 800 mm.

### PFA Toe guard



Code	Description
PFA.GM00.C00IM <input type="text" value="1"/>	L: 750 mm. Epoxy.
PFA.GM00.C00XN <input type="text" value="1"/>	L: 750 mm. Stainless steel.

 To complete this code, see annexe 1 (Clear opening table). The price shown is valid for PL 800 mm.

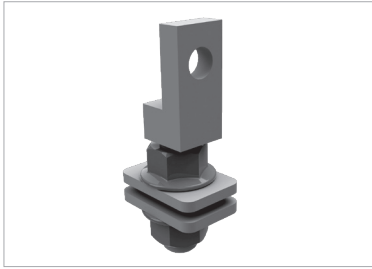


# 3

## PANELS

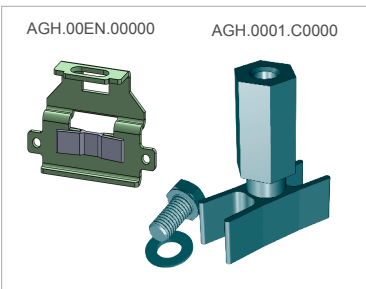


### ASH Panel regulator assembly



Code	Description
ASH.0001.C0000	60 mm. (2 units).
ASH.0002.C0000	100 mm. Only for Big Vision and Full Glass. (2 units).

### AGH Panel guide shoe assembly




Code	Description
AGH.0001.C0000	16 mm groove (2 units).
AGH.0003.C0000	T2 70 mm sill. Height 30 mm. 8 mm groove (2 units).
AGH.0004.C0000	T2 70 mm sill. Height 20 mm. 8 mm groove (2 units).
AGH.00EN.00000	8 mm groove. EN 81.20/50 (2 units).
AGH.DAA000000	8 mm groove. Type ADVANCED AGH-DA (Release II) EN 81.20/50 (2 units).

### GFH Glass



Code	Description
GFH.GMB0.00000 <input type="text" value="Dimension X1"/> <input type="text" value="Dimension Y1"/>	Laminated glass. Beveled big vision 5+5.
GFH.GME2.00000 <input type="text" value="Dimension X2"/> <input type="text" value="Dimension Y1"/>	Laminated glass. Flush big vision 6 + 6.

 **Code Dimension X<sub>1</sub>: PL / number of panels - 40 mm. Code Dimension Y<sub>1</sub>: HL - 200 mm.**  
**Code Dimension X<sub>2</sub>: PL / number of panels - 47 mm. Code Dimension Y<sub>1</sub>: HL - 200 mm.**  
**Note: In case of obtaining a value of three figures, precede by 0 to complete the code.**  
The price shown is valid for glass measurements T2, PL 800 mm and HL 2.000 mm, with a ratio of X and Y = 1.

# 4

## ELECTRONIC COMPONENTS



### WCE Electrical wiring



Code	Description
WCE.EN00.S52A2.1500	Encoder. Motor PM. L: 1500mm.
WCE.EN00.S52A4.0400	Encoder. Motor PM. L: 400 mm.
WCE.MT00.S42HK.0400	Motor PM. L: 400 mm.
WCE.MT00.S42HK.1500	Motor PM. L: 1500 mm.
WCE.MTAN.A42HK.0470	Motor PM. Electronic module VF7+. L: 400 mm.
WCE.MTAN.A42HK.1300	Motor PM. Electronic module VF7+ . L: 1300 mm.

### CFT Optical safety devices



Code	Description
CFT.FC00.C0000	Photocell. 3.000 mm wire length.
CFT.FCDM.C0000	Photocell. 5.000 mm wire length.

### KCE Electrical contact kit



Code	Description
KCE.A4A5.00000	Astra AS 011.
KCE.S4S3.00000	(EDC-92 + DCA-F3). 40 mm.
KCE.S5S3.00000	(EDC-61 + DCA-F3). 50 mm.

## VCI VF5+ Electronic module



Code	Description
VCI.V05P.0010.0FLGE	10 Ohms. EN 81-1/2. Left opening. Greek - English.
VCI.V05P.0010.0FRGE	10 Ohms. EN 81-1/2. Right opening. Greek - English.
VCI.V05P.0010.0FLTE	10 Ohms. EN 81-1/2. Left opening. Turkish - English.
VCI.V05P.0010.0FRTE	10 Ohms. EN 81-1/2. Right opening. Turkish - English.
VCI.V05P.0E10.0FLGE	10 Ohms. EN 81-20/50. Left opening. Greek - English.
VCI.V05P.0E10.0FRGE	10 Ohms. EN 81-20/50. Right opening. Greek - English.
VCI.V05P.0E10.0FLTE	10 Ohms. EN 81-20/50. Left opening. Turkish - English.
VCI.V05P.0E10.0FRTE	10 Ohms. EN 81-20/50. Right opening. Turkish - English.

## VCI VF7+ Relay Electronic module



Code	Description
VCI.V07P.0E10.0FLGE	10 Ohms. EN 81.20/50. Left opening. Greek - English.
VCI.V07P.0E10.0FRGE	10 Ohms. EN 81.20/50. Right opening. Greek - English.
VCI.V07P.0E10.0FLTE	10 Ohms. EN 81.20/50. Left opening. Turkish - English.
VCI.V07P.0E10.0FRTE	10 Ohms. EN 81.20/50. Right opening. Turkish - English.

## VCI VF7+ CAN Electronic module



Code	Description
VCI.V07P.0E1P.0FLEE	Type CAN . EN 81.20/50. Left opening. Spanish - English.
VCI.V07P.0E1P.0FREE	Type CAN . EN 81.20/50. Right opening. Spanish - English.

## VCI Emergency power supply



Code	Description
VCI.AESB.C00GE	Without battery. Greek - English.
VCI.AESB.C00TE	Without battery. Turkish - English.

## COE Battery



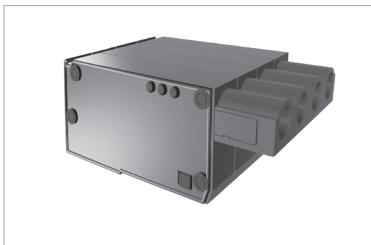
Code	Description
COE.BAT0.2A000	12 V. 2 A.

## VCP Programming console



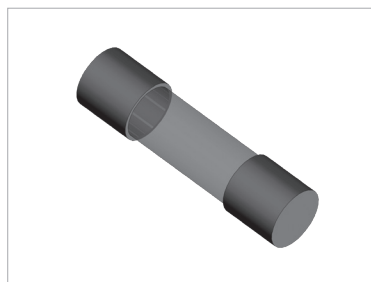
Code	Description
VCP.VFCP.C00EN	Programming console. English language.

## BCV Connector



Code	Description
BCV.CO00.S0502	5 mm and 2 paths.
BCV.CO00.S0504	5 mm and 4 paths.
BCV.CO00.S0505	5 mm and 5 paths.
BCV.CO00.S0512	5 mm and 12 paths.
BCV.CO00.S103H	10 mm and 3 paths.

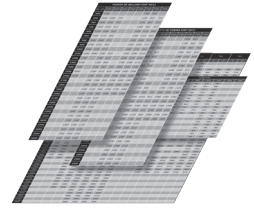
## COE Fuse



Code	Description
COE.FU4A.00000	4 A ceramic fuse.

# 5

## ANNEXES



### 1

**CLEAR OPENING TABLE**

PL	CODE	RATIO
600	0600	1,00
650	0650	1,00
700	0700	1,00
750	0750	1,00
800	0800	1,00
850	0850	1,06
900	0900	1,13
915	0915	1,14
950	0950	1,19
1.000	1000	1,25
1.050	1050	1,31
1.100	1100	1,38
1.150	1150	1,44
1.200	1200	1,50
1.250	1250	1,56
1.300	1300	1,63
1.350	1350	1,69
1.400	1400	1,75

To determine the final price, is necessary multiply the base price by the ratio in the table.

### 2

**SYNCHRONIZATION WIRE LENGTH BY CLEAR OPENING TABLE**

PL	CODE / LENGTH	
	C2	T2
600	02280	01080
650	02480	01080
700	02580	01180
750	02780	01180
800	02980	01280
850	02980	01280
900	03280	01380
950	03480	01480
1.000	03680	01480
1.100	03980	01580
1.200	04380	01680
1.300	04680	-
1.400	05040	-

To determine the final price it is necessary to multiply the length x 0,0097.

## 3

## SILL OPTIONS

SILL TYPE	CODE	Increase in the final price (€)
With dust holes	0A	6,30 €
Without dust holes	00	-
Heated with dust holes	HA	241,37 €
Heated without dust holes	H0	241,37 €
Cut for semiautomatic outside with dust holes	RA	75 €
Cut for semiautomatic outside without dust holes	RO	75 €
Cut for cabin frame with dust holes*	CA	75 €
Cut for cabin frame without dust holes*	CO	75 €

\* Only for Telescopic doors.

## 14

## SILL MATERIALS, FINISHES AND DIMENSION TABLE

MATERIAL	AISI	OPENING	CHANNEL	CODE	DESCRIPTION	HEATED OPTION	RATIO
Aluminium	-	C2	8,2 mm	AL054008	54 mm. Panels 50 mm.	Available	1,00
				AL090008	90 mm. Panels 40 + 40 mm.		1,00
		T2	15 mm	AL070015	70 mm. Panels 30 + 30 mm.		1,00
				A2070008	70 mm. Panels 30 + 30 mm. Height 20mm.		1,00
					A8070008		70 mm. Panels 30 + 30 mm. Height 30mm.
Reinforced aluminium	-	C2	8,2 mm	AR054008	54 mm. Panels 50 mm.	Not available	1,50
		T2		AR090008	90 mm. Panels 40 + 40 mm.		1,50
Solid iron	-	C2	14 mm	HM054015	54 mm. Panels 50 mm.	Not available	6,80
		T2	15 mm	HM090015	90 mm. Panels 40 + 40 mm.		6,80
Solid stainless steel	-	C2	14 mm	XM054015	54 mm. Panels 50 mm.	Not available	9,75
		T2	15 mm	XM090015	90 mm. Panels 40 + 40 mm.		9,75
Iron metal sheet	-	C2	15 mm	HC054015	54 mm. Panels 50 mm.	Available	4,30
			14,8 mm	HC090015	90 mm. Panels 40 + 40 mm.		4,30
		T2	15 mm	HC070015	70 mm. Panels 30 + 30 mm.	4,30	
Stainless steel metal sheet	304	C2	15 mm	XC054015	54 mm. Panels 50 mm.	Available	7,07
		T2		14,8 mm	XC090015		90 mm. Panels 40 + 40 mm.

**NOTE:** In case of EN 81.20/50 Release II complete at the end of the code R2. (From October 2020)

To determine the final price it is necessary to multiply the base price by the ratio in the table.









### **Sales contacts**

General: [commercial@klefer.com](mailto:commercial@klefer.com)

[www.klefer.com](http://www.klefer.com)