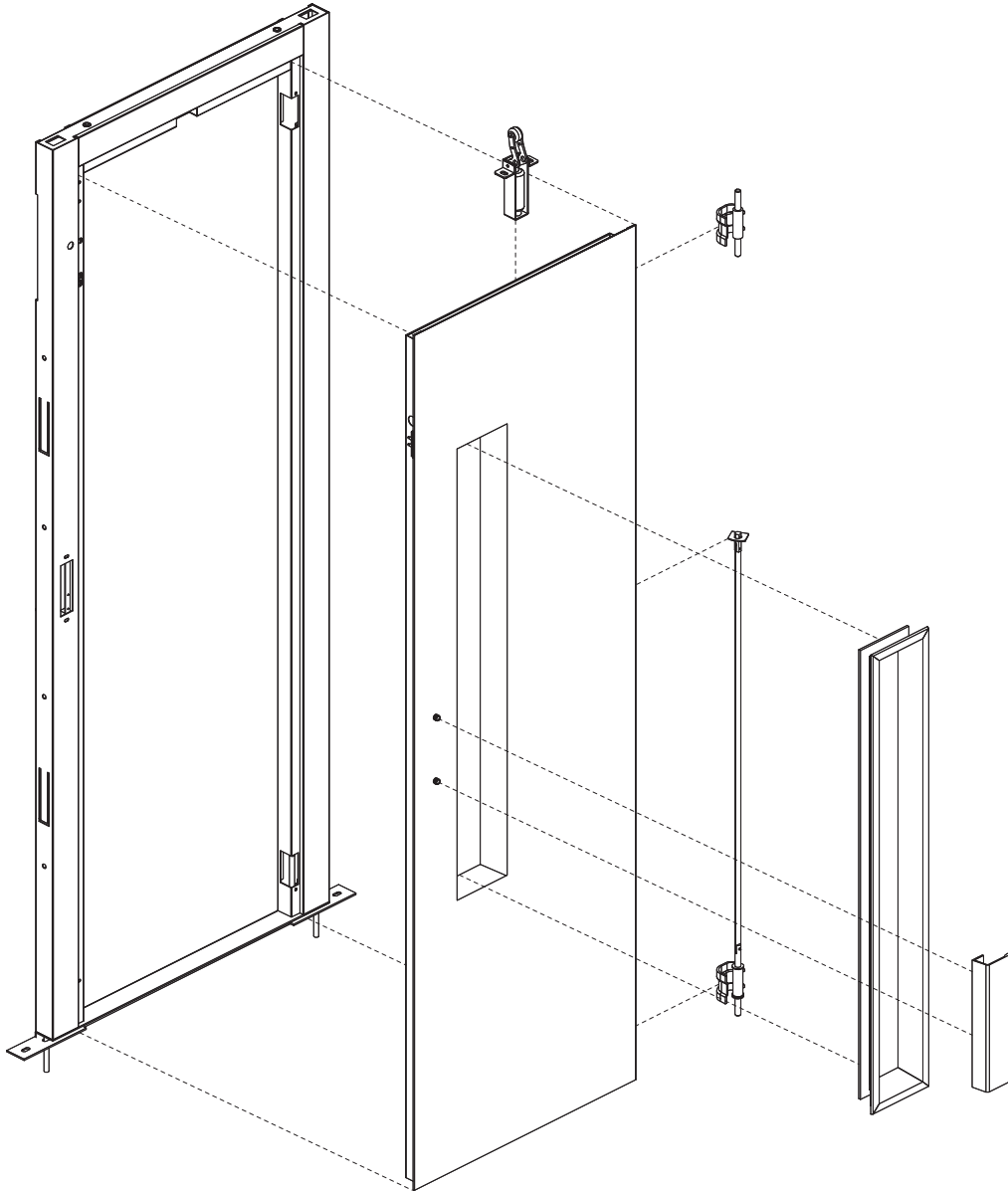


SEMI AUTOMATIC SPARE PARTS

Semi Automatic Single Panel Doors



Multimedia design and production by Klefer.

KLEFER S.A.

KILKIS Business Park 61100

KILKIS (GREECE)

Tel.: +30 23410 75730 - 2

Email: commercial@klefer.com

General Commercial Register (GEMI): 014504535000

National Producers Register Nr.: 2581



- Spare part in stock: Available with a minimal period of delivery.



- Spare parts to be manufactured: Need to be fabricated and therefore requires a longer delivery period.

Klefer reserves the right to modify the specification and price of the products in this catalogue without prior notice.

Rate revision according version.

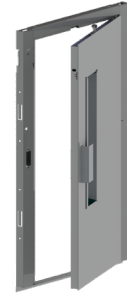
The rates are valid except for typographical mistakes.

The price of packaging is not included.

IVA or VAT not included.

1

LANDING



CRJ | Locking device




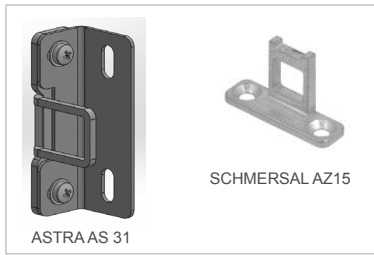
| Code | Description |
|------------|--|
| CRJ.121423 | Kronenberg Right DLF1MO-R-X15(u).5.90/01.P. (For Left door). |
| CRJ.121422 | Kronenberg Left DLF1MO-L-X15(u).5.90/01.P. (For Right door). |
| CRJ.140460 | Kronenberg Left DL1MO-L-X15(u).5.90/01.P. (For Right door) |
| CRJ.140465 | Kronenberg Right DL1MO-R-X15(u).5.90/01.P. (For Left door) |
| CRJ.120034 | Kronenberg Right DLF1-R-X15(u).20.9/11. (For Right door) |
| CRJ.58899 | Kronenberg Left DLF1-L-X15(u).20.9/11. (For Left door) |
| CRJ.140463 | Kronenberg Left DL1MO-L-X20(ANS0).5.90/01.P. (For Right door) |
| CRJ.140467 | Kronenberg Right DL1MO-R-X20(ANS0).5.90/01.P. (For Left door) |
| CRJ.115710 | Kronenberg Left DLF2-L-X25(u).10.6.9/11. (For Right door) |
| CRJ.154257 | Kronenberg Right DLF2-R-X25(u)10.6.9/11. (For Left door) |
| CRJ.134216 | Kronenberg Right DLF2-R-W-X15(u).10.9/11. (For Left door).(IP54) |
| CRJ.98350 | Kronenberg Left DLF2-L-W-X15(u).10.9/11. (For Right door).(IP54) |
| CRJ.119662 | Schmersal Right AV 20 RH 105 E4 X20U. (For Right door).(IP54) |
| CRJ.119663 | Schmersal Left AV 20 LH 105 E4 X20U. (For Left door).(IP54) |
| CRJ.61780 | Zantiotis (EO1 A/B) |
| CRJ.100928 | Matthaiou (T1) |
| CRJ.130209 | Matthaiou (T1). Roller Ø28 |
| CRJ.72269 | Zantiotis (EO1 A/B). (2 locks).(For 2 panel door) |
| CRJ.97033 | Zantiotis (EO1 A/B). (1 lock).(For 2 panel door) |

CRJ | Door contact



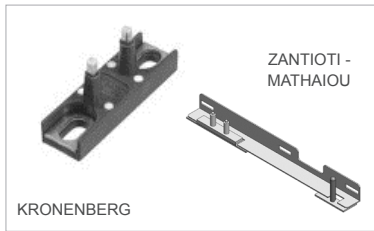
| Code | Description |
|------------|---------------------------------|
| CRJ.76983 | Kronenberg HZTK-1. |
| CRJ.97258 | Kronenberg HZS. |
| CRJ.90603 | Kronenberg WZA 11. |
| CRJ.65299 | Schmersal IP54 AZ 15 ZO-2036-3. |
| CRJ.148709 | ASTRAAS 31. |

CRJ  **Actuator**



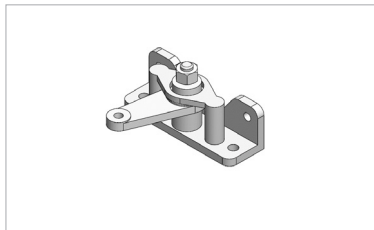
| Code | Description |
|------------|---------------------------|
| CRJ.148710 | ASTRAAS 31 (1panel door). |
| CRJ.149518 | ASTRAAS 31 (2panel door). |
| CRJ.89531 | SCHMERSAL AZ15. |

CRJ  **Contact bridge**



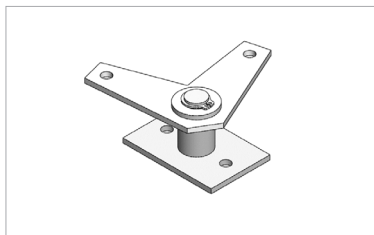
| Code | Description |
|-----------------|---------------------|
| CRJ.76986 | Kronenberg PZ 18. |
| CRJ.93591 | Kronenberg PZ 21. |
| CRJ.MATHAIOU.AN | Mathaiou (TI). |
| ZANTETH1B | Zantioti (EO1 A/B). |

CRJ  **Single bearing block**



| Code | Description |
|-----------|---------------|
| CRJ.90605 | Kronenberg E. |
| CRJ.82465 | Zantioti. |

CRJ  **Pull rod deflection**



| Code | Description |
|------------|------------------|
| CRJ.129137 | Kronenberg E-ZU. |
| CRJ.75100 | KLEFER V1. |

CRJ  **Roller lever**



| Code | Description |
|------------|-------------------------|
| CRJ.82466 | Zantioti (2panel door). |
| CRJ.104356 | RH Kronenberg. |

CRJ  **Cover bridge**



| Code | Description |
|------------|----------------------|
| CRJ.142276 | Zantioti / Mathaiou. |

CRJ  **Latch plate**



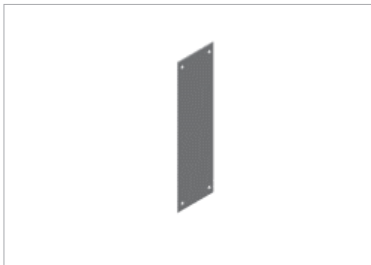
| Code | Description |
|-----------|-----------------|
| CRJ.82256 | Kronenberg (B). |

CRJ  **Safety lock**



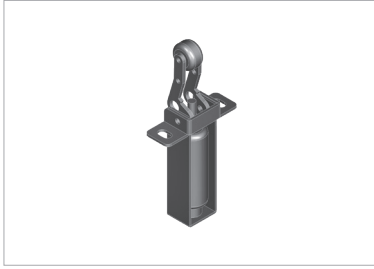
| Code | Description |
|-----------|------------------|
| CRJ.71531 | AGB B 856.45.03. |

PTA  **Push plate**



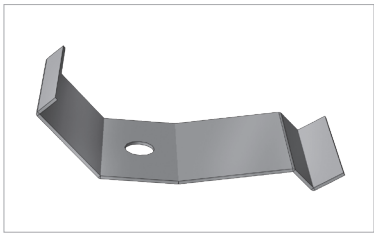
| Code | Description |
|----------------|-------------|
| PTA.00P6.S00AL | CO ≤ 650. |
| PTA.00PE.S00AL | CO ≥ 700. |

PAT Shock absorber



| Code | Description |
|----------------|-----------------|
| PAT.GL00.S0000 | Shock absorber. |

AMI Vision clamp set



| Code | Description |
|----------------|-------------------------|
| AMI.GL00.S0000 | KLEFER model (8 units). |

PTA Handle



| Code | Description |
|-----------|--|
| PTA.67998 | Elegance model. |
| PTA.69061 | NIKEL-MAT Chromium No 231. |
| PTA.69067 | NIKEL-MAT No 346. |
| PTA.71114 | BAR LUX Inox satin (Z1), L:450mm. |
| PTA.75688 | BAR LUX Inox satin (Z3), L:800mm. |
| PTA.79054 | BAR LUX Inox gold satin (Z1), L:450mm. |
| PTA.93138 | BAR LUX Inox satin (Z2), L:500mm. |

ADS Triangular key set



| Code | Description |
|----------------|---------------------------|
| ADS.0011.R0000 | Triangular key (Plastic). |

SMT Thrust bearing



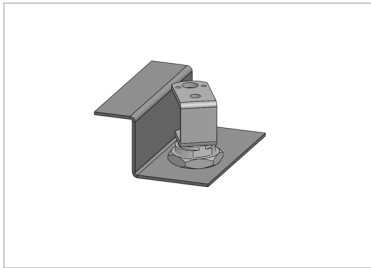
| Code | Description |
|-----------|---|
| SMT.74037 | Bearing 1600/12. External Ø20 / Internal Ø12 (1panel door). |

SMT Hinge Spacer



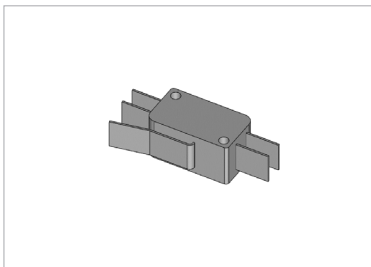
| Code | Description |
|-----------|--|
| SMT.74319 | Hinge spacer 2mm (1panel door)(2 pcs). |

PCE Electrical contact with support assembly



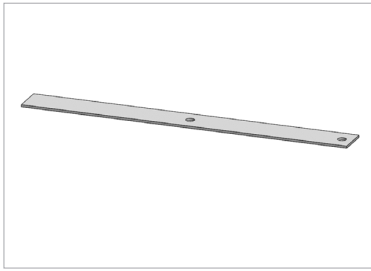
| Code | Description |
|-------------------------|--|
| PCE.MFCZ.R0000.SETL.075 | Low pit Bi-stable contact. Left door. Jamb width<100. |
| PCE.MFCZ.R0000.SETR.075 | Low pit Bi-stable contact. Right door. Jamb width<100. |
| PCE.MFCZ.R0000.SETL.100 | Low pit Bi-stable contact. Left door. Jamb width≥100. |
| PCE.MFCZ.R0000.SETR.100 | Low pit Bi-stable contact. Right door. Jamb width≥100. |
| SMT.MAISON.SETL.AX | Low pit monostable contact. Left door. |
| SMT.MAISON.SETR.AX | Low pit monostable contact. Right door. |

PCE Electrical contact



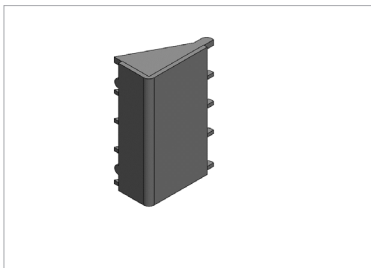
| Code | Description |
|----------------|--------------------|
| PCE.MFCZ.R0000 | Bi-stable contact. |

SMA Fixation bracket



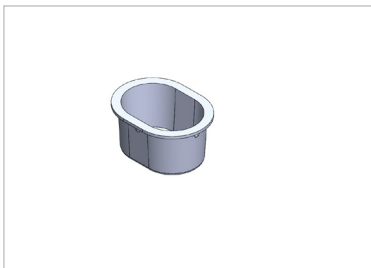
| Code | Description |
|------------|--------------------------------------|
| SMA.107067 | Brackets. (1 panel door).(12 units). |

SMA Hinge cover



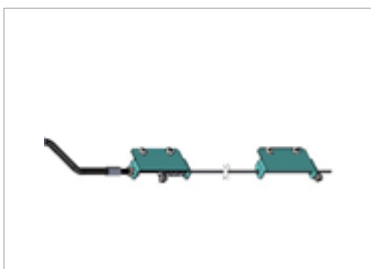
| Code | Description |
|-----------|----------------------------|
| SMA.58364 | Hinge cover.(1panel door). |

SMA Hole cover



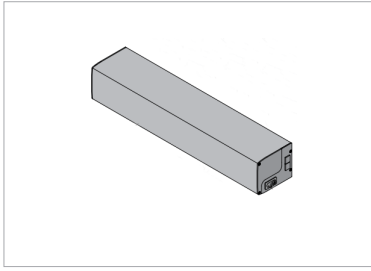
| Code | Description |
|-----------|--------------------------------------|
| SMA.78698 | Latch bolt hole cover (1panel door). |

KDM Manual unlocking device



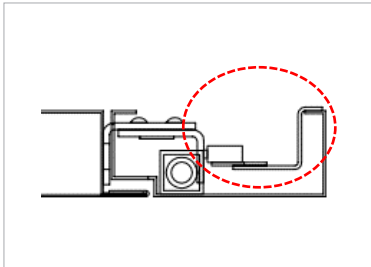
| Code | Description |
|----------------|----------------|
| KDM.SE.02.S.0D | Right opening. |
| KDM.SE.02.S.0I | Left opening. |

SMA Automatic mechanism



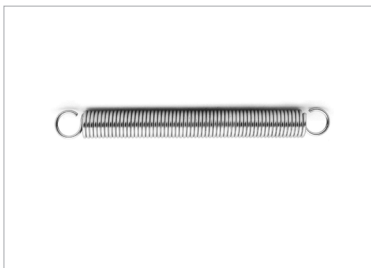
| Code | Description |
|--------------------|---|
| SMA.AUTMEC | Automatic mechanism semiautomatic door. |
| SMA.AUTMEC.CONTROL | Control automatic mechanism semiautomatic door. |
| SMA.AUTMEC.RADAR | Motion detector automatic mechanism semiautomatic door. |

SMA Hidden contact



| Code | Description |
|------------------------|--|
| SMA.FRAME.EXTRACONTACT | Hidden contact set. Jamb: 100-125 (1panel door). |

SMT Spring



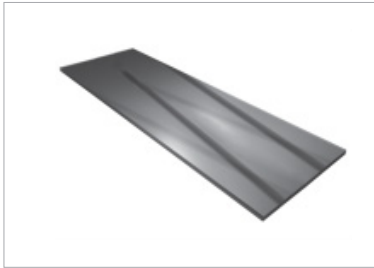
| Code | Description |
|-----------|---------------------------|
| SMT.72270 | Door panel return spring. |

PMT Vision frame




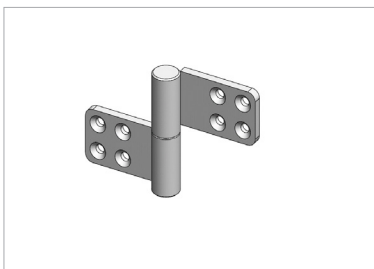
| Code | Description |
|---|-------------------|
| PMT.GL00.S0000 | Model Klefer. |
| PMT.BV <input type="text" value="6"/> .S0000. <input type="text" value="CO"/> <input type="text" value="CH"/> | Model Big Vision. |

GMI  **Vision Glass**



| Code | Description |
|-------------------------------------|--------------------------------|
| GFH.GM00.00000. CO CH | Model Big Vision (with frame). |
| GMI.GL00.S0000 | Model Klefer. |
| GMI.SK00.S0000 | Model Skotia. |
| GMI.NWSK.S0000 | Model New Skotia. |

CFB  **Hinge**






| Code | Description |
|--------------|--------------------------------|
| CFB.73473.L | Ø30. Metallized. (Left door). |
| CFB.73473.R | Ø30. Metallized. (Right door). |
| CFB.89380.L | Ø30. Epoxy. (Left door). |
| CFB.89380.R | Ø30. Epoxy. (Right door). |
| CFB.77825.L | Ø20. Metallized. (Left door). |
| CFB.77825.R | Ø20. Metallized. (Right door). |
| CFB.143377.L | Ø20. Epoxy. (Left door). |
| CFB.143377.R | Ø20. Epoxy. (Right door). |

ANNEXES

6a

EPOXY FINISHES TABLE

| MATERIAL | FINISH | | CODE | RATIO | |
|---------------|---|----------|------|---------------------|---|
| Epoxy | Leatherette standard | RAL 7032 | IM | 1 | |
| | | RAL 9016 | | 75,00€ ¹ | |
| | Leatherette Other | RAL 1013 | | 75,00€ ¹ | |
| | | RAL 9001 | | 75,00€ ¹ | |
| | | RAL 7001 | | 75,00€ ¹ | |
| | | RAL 7010 | | 75,00€ ¹ | |
| | | RAL 1001 | | 75,00€ ¹ | |
| | | RAL 7005 | | 75,00€ ¹ | |
| | | RAL 7012 | | 75,00€ ¹ | |
| | | RAL 7030 | | 75,00€ ¹ | |
| | | RAL 7035 | | 75,00€ ¹ | |
| | | RAL 8017 | | 75,00€ ¹ | |
| | | RAL 7040 | | 75,00€ ¹ | |
| | | Sparkle | | PP300 |  |
| | | Textured | | Grey |  |
| Grey Metallic |  | | | | |

¹ Increase in the final price.

6b

STAINLESS STEEL FINISHES TABLE

| MATERIAL | | CODE | RATIO |
|-----------------|------------------|-----------|---|
| Stainless steel | AISI 304 | XN | 2,10 |
| | AISI 441 | MX | 1,40 |
| | AISI 304 Mirror | B2 | 2,45 |
| | AISI 441 Mirror | MB | 1,40 |
| | Special finishes | AE |  |

¹.Increase in the final price

.To determine the final price it is necessary to multiply the base price by the ratio in the table

Enquiry: Order:

Order N°: Date: / / Delivery date: / /

Customer:

Delivery address:

SPARE PARTS ORDER

| | | |
|----------|--|-------|
| QUANTITY | <input style="width: 95%;" type="text"/> | NOTES |
|----------|--|-------|

| | | |
|----------|--|-------|
| QUANTITY | <input style="width: 95%;" type="text"/> | NOTES |
|----------|--|-------|

| | | |
|----------|--|-------|
| QUANTITY | <input style="width: 95%;" type="text"/> | NOTES |
|----------|--|-------|

| | | |
|----------|--|-------|
| QUANTITY | <input style="width: 95%;" type="text"/> | NOTES |
|----------|--|-------|

| | | |
|----------|--|-------|
| QUANTITY | <input style="width: 95%;" type="text"/> | NOTES |
|----------|--|-------|

| | | |
|----------|--|-------|
| QUANTITY | <input style="width: 95%;" type="text"/> | NOTES |
|----------|--|-------|

| | | |
|----------|--|-------|
| QUANTITY | <input style="width: 95%;" type="text"/> | NOTES |
|----------|--|-------|

| | | |
|----------|--|-------|
| QUANTITY | <input style="width: 95%;" type="text"/> | NOTES |
|----------|--|-------|

| | | |
|----------|--|-------|
| QUANTITY | <input style="width: 95%;" type="text"/> | NOTES |
|----------|--|-------|

| | | |
|----------|--|-------|
| QUANTITY | <input style="width: 95%;" type="text"/> | NOTES |
|----------|--|-------|

| | | |
|----------|--|-------|
| QUANTITY | <input style="width: 95%;" type="text"/> | NOTES |
|----------|--|-------|

| | | |
|----------|--|-------|
| QUANTITY | <input style="width: 95%;" type="text"/> | NOTES |
|----------|--|-------|

| | | |
|----------|--|-------|
| QUANTITY | <input style="width: 95%;" type="text"/> | NOTES |
|----------|--|-------|

| | | |
|----------|--|-------|
| QUANTITY | <input style="width: 95%;" type="text"/> | NOTES |
|----------|--|-------|



Sales contacts

General: commercial@klefer.com

www.klefer.com