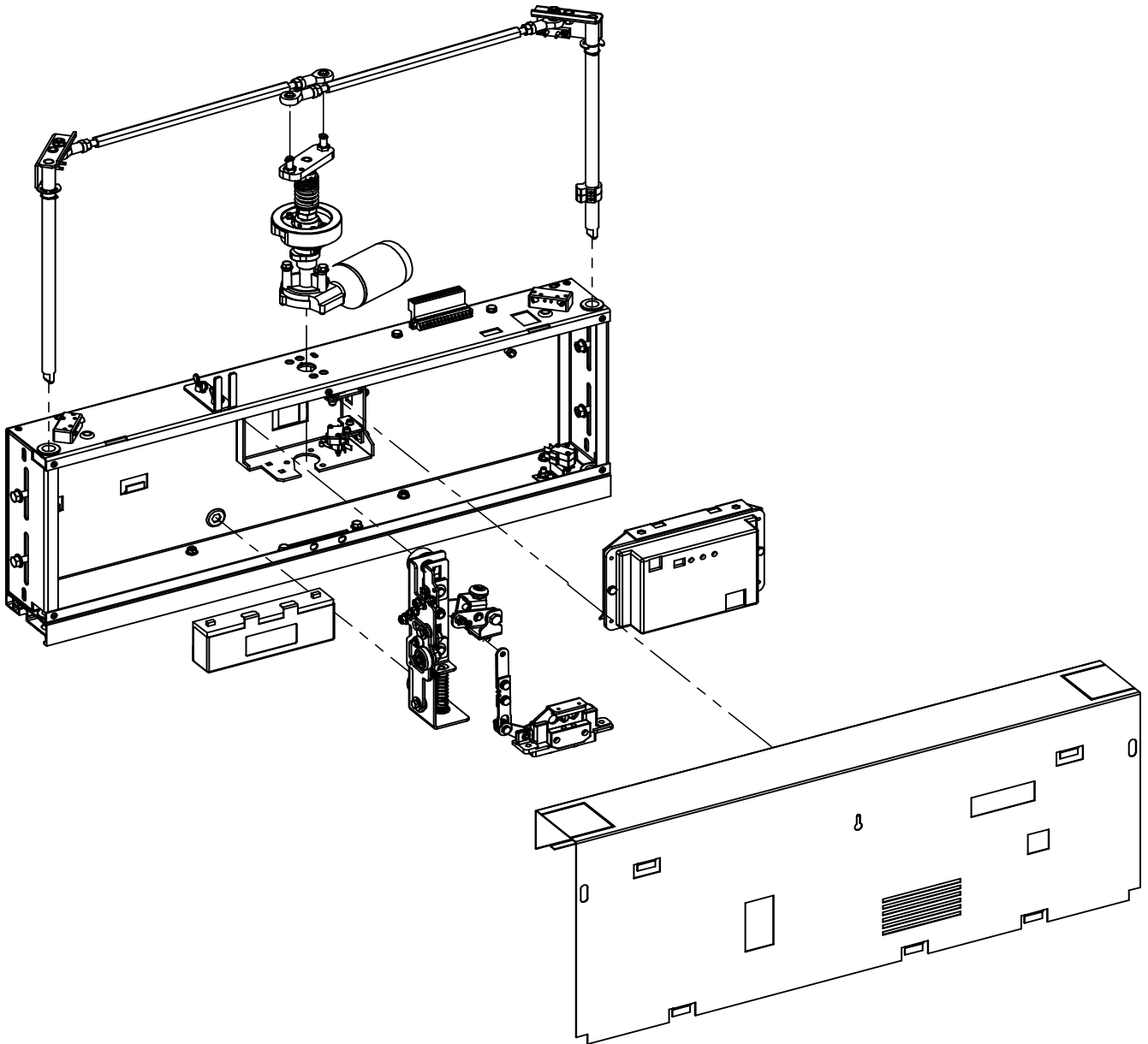


G5 SPARE PARTS

Automatic folding car door



Multimedia design and production by Klefer.

KLEFER S.A.

KILKIS Business Park 61100

KILKIS (GREECE)

Tel.: +30 23410 75730 - 2

Email: commercial@klefer.com

General Commercial Register (GEMI): 014504535000

National Producers Register Nr.: 2581



- Spare part in stock: Available with a minimal period of delivery.



- Spare parts to be manufactured: Need to be fabricated and therefore requires a longer delivery period.

Klefer reserves the right to modify the specification and price of the products in this catalogue without prior notice.

Rate revision according version.

The rates are valid except for typographical mistakes.

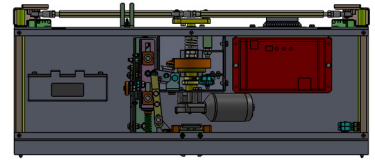
The price of packaging is not included.

IVA or VAT not included.

1.1

DOOR OPERATOR

Traction parts



G5 Motor



Code	Description
CMT.RPL.GKE01	Motor with thermal protection. 24 V.

Code	Description
CMT.GKE02	Motor with thermal protection. 24 V.

G5 Panel rotating bracket



Code	Description
G5.139585	E:550.
G5.139587	E:600.
G5.139588	E:650.
G5.139589	E:700.
G5.139590	E:750.
G5.139591	E:800.
G5.139592	E:850.
G5.139593	E:900.
G5.139595	E:950.
G5.139596	E:1000.

G5 Panel rotating shaft

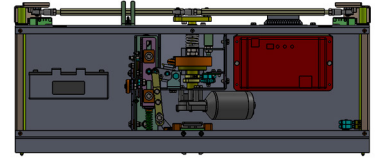


Code	Description
G5.139237	Left.
G5.139233	Right.

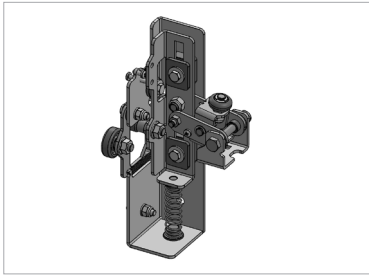
1.2

DOOR OPERATOR

Acting parts

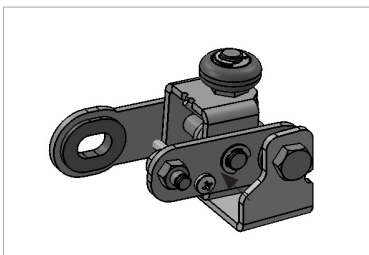


G5 Car door lock base assembly



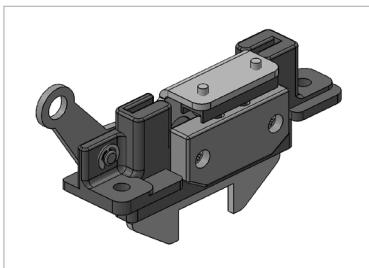
Code	Description
G5.K1997	Car door lock base assembly.

G5 Car door lock clutch assembly



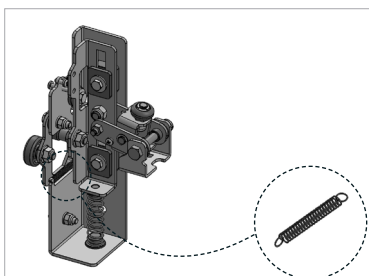
Code	Description
G5.K1993	Car door lock clutch assembly.

G5 Car door lock panel locking assembly



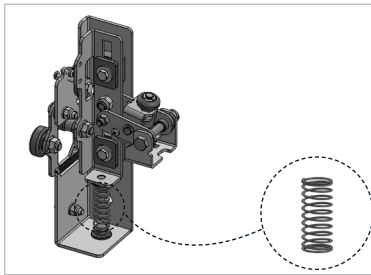
Code	Description
G5.141459	Car door lock panel locking assembly.

G5 Cam bracket spring



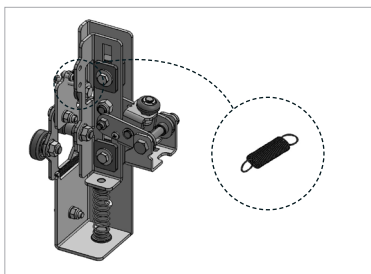
Code	Description
G5.138102	Bracket spring.

G5  **Vertical guide spring**



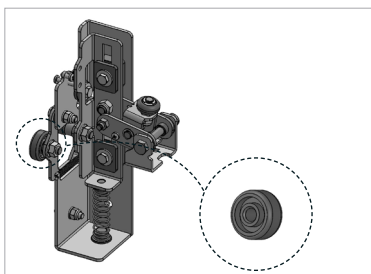
Code	Description
G5.138103	Vertical guide spring.

G5  **Vertical guide locking spring**



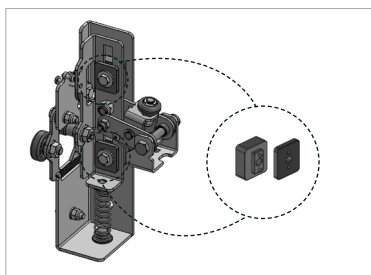
Code	Description
G5.138104	Vertical guide locking spring.

G5  **Cam bracket wheel**



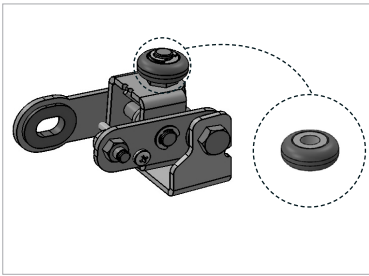
Code	Description
G5.139174	Cam bracket wheel.

G5  **Vertical guide support**



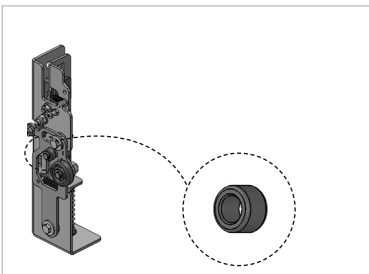
Code	Description
G5.139173	Vertical guide support.

G5  **Clutch wheel**



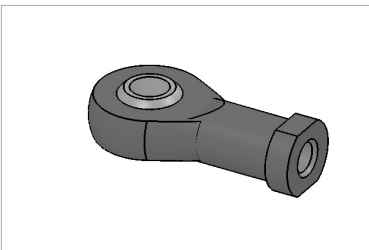
Code	Description
G5.139175	Clutch wheel.

G5  **Cam bracket guiding wheel**



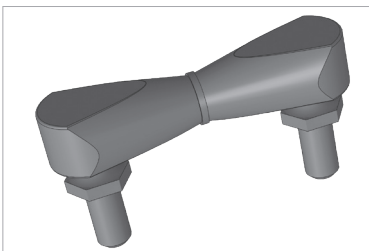
Code	Description
G5.139180	Cam bracket guiding wheel.

G5  **Ball joint**



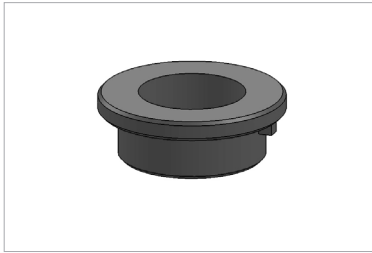
Code	Description
G3.505003.1050*	Ball Joint. Left & Right. *Common for G5 & G3

G5  **Assembled ball joint**



Code	Description
G5.139973	Angle joint.

G5  **Lateral bushing**



Code	Description
G5.52695	Ø 28 mm. L: 10 mm.

G5  **Cam**



Code	Description
CLA.RLG5.PD000	Lateral retractable cam.

G5  **Egress device**

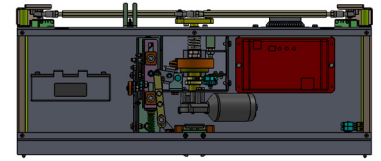


Code	Description
KDM.G5.NV.2000	Pit egress. CH:2000.
KDM.G5.NV.2100	Pit egress. CH:2100.

1.3

DOOR OPERATOR

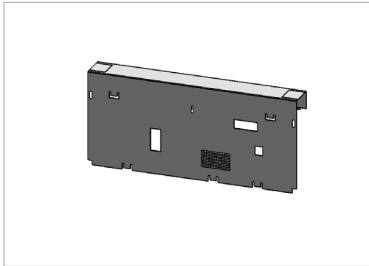
Carriages



G5



Operator cover



Electronic board F1

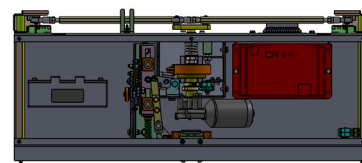
Code	Description
G5.140071	E:550.
G5.139762	E:600.
G5.139044	E:650.
G5.139842	E:700.
G5.138985	E:750.
G5.140112	E:800.
G5.138986	E:850.
G5.138987	E:900.
G5.140603	E:950.
G5.139763	E:1000.

Electronic board FDC-01

Code	Description
G5.170873	E:550.
G5.170874	E:600.
G5.170875	E:650.
G5.170877	E:700.
G5.170878	E:750.
G5.170880	E:800.
G5.170881	E:850.
G5.170883	E:900.
G5.170884	E:950.
G5.170885	E:1000.

2

ACCESSORIES

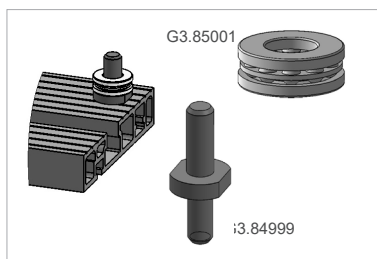


G5 Sill



Code	Description
Upper	
G5.140068	E:550.
G5.139751	E:600.
G5.138969	E:650.
G5.139845	E:700.
G5.138970	E:750.
G5.140110	E:800.
G5.138975	E:850.
G5.138976	E:900.
G5.140601	E:950.
G5.139752	E:1000.
Lower	
G5.140070	E:550.
G5.139753	E:600.
G5.138979	E:650.
G5.139844	E:700.
G5.138982	E:750.
G5.140111	E:800.
G5.138983	E:850.
G5.138984	E:900.
G5.140602	E:950.
G5.139754	E:1000.

G5 Sill accessory

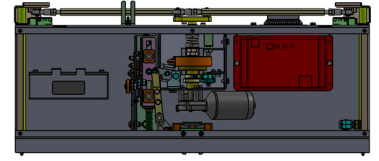


Code	Description
G3.85001*	Thrust bearing.
G3.84999*	Panel support pin (Set).

*Common for G5 & G3

3

PANELS



G5 Aluminium profile



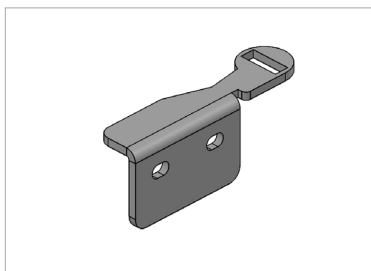
Code	Description
G5.138897	CH:2000. Left.
G5.143833	CH:2100. Left.
G5.138896	CH:2000. Right.
G5.143832	CH:2100. Right.

G5 Handle



Code	Description
G3.60305*	Handle for Klefer panels. *Common for G5 & G3

G5 Hinge reinforcement



Code	Description
G5.138936.SET	Operating panel hinge reinforcement. Right & Left. E:750.

G5



Folding panel guide shoe



Code

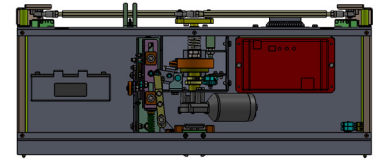
G5.506011

Description

Guide shoes. Upper & lower. (4pcs).

4

ELECTRONIC COMPONENTS



G5 Electrical wiring



Electronic board F1

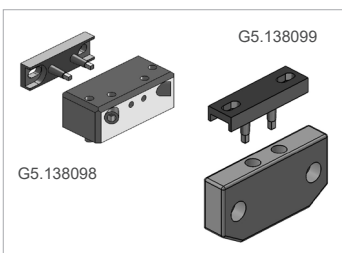
Code	Description
G5.141050	14-pin connector wirement. E: 550-650.
G5.139116	14-pin connector wirement. E: 700-1000.
G5.139115	Electric contact wirement. E: 550-650.
G5.139112	Electric contact wirement. E: 700-850.
G5.139114	Electric contact wirement. E: 900-1000.
G5.82780	Infringement micro-switch wirement.
G5.140974	Terminal switch wirement. E: 550-650.
G5.82777	Terminal switch wirement. E: 700-1000.
G3.57843*	Battery wirement. E: 550-650.
G5.139117	Battery wirement. E: 700-1000.

*Common for G5 & G3

Electronic board FDC-01

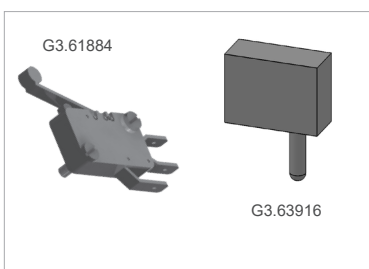
Code	Description
G5.141050	14-pin connector wirement. E: 550-650.
G5.139116	14-pin connector wirement. E: 700-1000.
G5.82780	Infringement micro-switch wirement.
G5.140974	Terminal switch wirement. E: 550-650.
G5.82777	Terminal switch wirement. E: 700-1000.
G5.168579	Wiring electronic board FDC-01

G5 Electrical contact kit



Code	Description
G5.138099	Electric contact ASTRAAS 010 A & PA 02.
G5.138098	Electric contact ASTRAAS 03 A2 & PA 02.

G5 Terminal switch




Code	Description
G3.61884*	Terminal switch.
G3.63916*	Infringement microswitch.

*Common for G5 & G3

G5  **Electronic module**



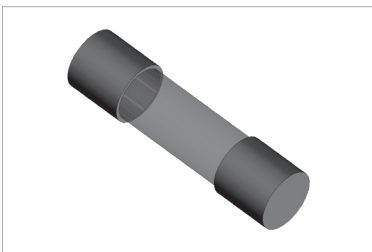
Code	Description
G5.157696	Electronic board FDC-01. Greek-English.
G5.RPL.70455	Electronic board FDC-01. Greek-English (electronic board F1 replacement).

G5  **Battery**



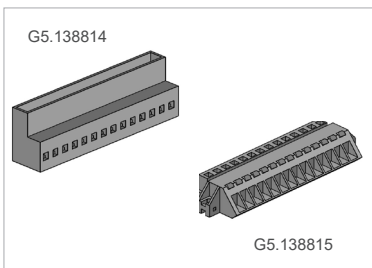
Code	Description
G3.52273*	12 V. 2 A. *Common for G5 & G3

G5  **Fuse**



Code	Description
G3.63194*	Ceramic fuse 2 A (electronic board F1)
G3.167703*	Ceramic fuse 3.15 A (electronic board FDC-01)
G3.167704*	Ceramic fuse 10 A (electronic board FDC-01) *Common for G5 & G3

G5  **Connector**



Code	Description
G5.138814	14-pin connector, male.
G5.138815	14-pin connector, female.



Sales contacts

General: commercial@klefer.com

www.klefer.com