

G3

SPARE PARTS

Automatic folding car door

Multimedia design and production by Klefer.

KLEFER S.A.
KILKIS Business Park 61100
KILKIS (GREECE)
Tel.: +30 23410 75730 - 2
Email: commercial@klefer.com
General Commercial Register (GEMI): 014504535000
National Producers Register Nr.: 2581



- Spare part in stock: Available with a minimal period of delivery.



- Spare parts to be manufactured: Need to be fabricated and therefore requires a longer delivery period.

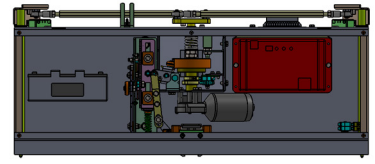
Klefer reserves the right to modify the specification and price of the products in this catalogue without prior notice.

Rate revision according version.
The rates are valid except for typographical mistakes.
The price of packaging is not included.
IVA or VAT not included.

1.1

DOOR OPERATOR

Traction parts



G3 Motor



Electronic board F1

Code	Description
G3.RPL.70454	Motor 24V (Sill 100).
G3.RPL.70480	Motor 24V (Sill 80).

Electronic board FDC-01

Code	Description
G3.167433	Motor 24V (Sill 100).
G3.168658	Motor 24V (Sill 80).

G3 Panel rotating bracket



Code	Description
G3.69144	E:550.
G3.66603	E:600.
G3.63841	E:650.
G3.63842	E:700.
G3.63843	E:750.
G3.63844	E:800.
G3.63845	E:850.
G3.63846	E:900.
G3.63847	E:950.
G3.65045	E:1000.

G3 Panel rotating shaft

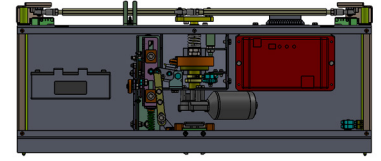


Code	Description
G3.63501	Left. (Sill 100).
G3.63500	Right. (Sill 100).
G3.82904	Left. (Sill 80).
G3.82903	Right. (Sill 80).

1.2

DOOR OPERATOR

Acting parts

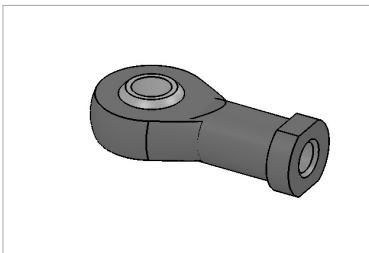


G3 Panel rotating shaft circlips



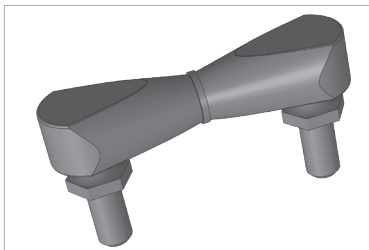
Code	Description
G3.52439	Washer DIN 471 Ø16mm.
G3.52443	Washer DIN 6799 Ø15mm.

G3 Ball joint



Code	Description
G3.505003*	Ball Joint. Left & Right. *Common for G5 & G3

G3 Assembled ball joint

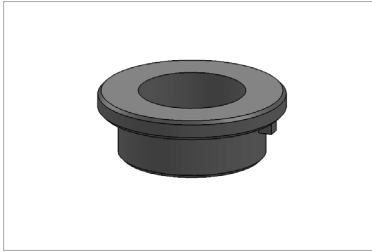


Code	Description
G5.139973*	Angle joint. *Common for G5 & G3

G3



Lateral bushing



Code

G3.52695

Description

Ø 28 mm. L: 10 mm.

G3



Cam



Code

CLA.RLG5.PD000

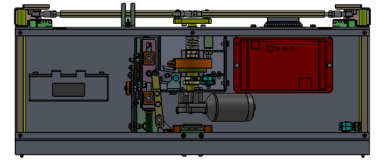
Description

Lateral retractable cam.

1.3

DOOR OPERATOR

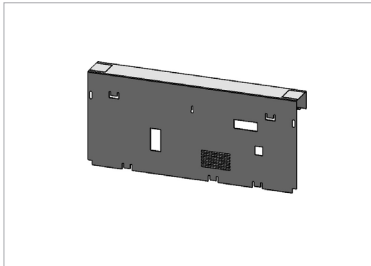
Carriages



G3



Operator cover



Electronic board F1
Code

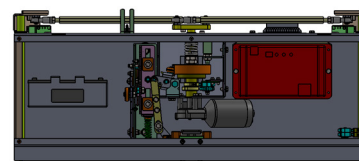
	Description
Sill 100	
G3.69143	E:550.
G3.66602	E:600.
G3.64099	E:650.
G3.64100	E:700.
G3.64101	E:750.
G3.64102	E:800.
G3.63992	E:850.
G3.64103	E:900.
G3.64104	E:950.
G3.65349	E:1000.
Sill 80	
G3.75332	E:550.
G3.70944	E:600.
G3.72901	E:650.
G3.70945	E:700.
G3.71855	E:750.
G3.70946	E:800.
G3.71856	E:850.
G3.70947	E:900.
G3.72591	E:950.
G3.72939	E:1000.

Electronic board FDC-01
Code

	Description
Sill 100	
G3.171035	E:550.
G3.171040	E:600.
G3.171036	E:650.
G3.171041	E:700.
G3.171037	E:750.
G3.171042	E:800.
G3.171038	E:850.
G3.171043	E:900.
G3.171039	E:950.
G3.171044	E:1000.
Sill 80	
G3.171130	E:550.
G3.171136	E:600.
G3.171131	E:650.
G3.171137	E:700.
G3.171132	E:750.
G3.171138	E:800.
G3.171133	E:850.
G3.171140	E:900.
G3.171134	E:950.
G3.171141	E:1000.

2

ACCESSORIES



G3



Sill



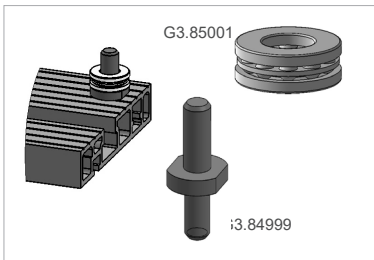
Code	Description
Upper (Sill 80)	
G3.75333	E:550.
G3.70961	E:600.
G3.72903	E:650.
G3.70962	E:700.
G3.71858	E:750.
G3.70963	E:800.
G3.71860	E:850.
G3.70964	E:900.
G3.72589	E:950.
G3.72940	E:1000.
Lower (Sill 80)	
G3.507000.080AR0550	E:550.
G3.507000.080AR0600	E:600.
G3.507000.080AR0650	E:650.
G3.507000.080AR0700	E:700.
G3.507000.080AR0750	E:750.
G3.507000.080AR0800	E:800.
G3.507000.080AR0850	E:850.
G3.507000.080AR0900	E:900.
G3.507000.080AR0950	E:950.
G3.507000.080AR1000	E:1000.

G3  **Sill**



Code	Description
Upper (Sill 100)	
G3.69145	E:550.
G3.66606	E:600.
G3.64105	E:650.
G3.64106	E:700.
G3.64107	E:750.
G3.64108	E:800.
G3.64014	E:850.
G3.64109	E:900.
G3.64110	E:950.
G3.65350	E:1000.
Lower (Sill 100)	
G3.507000.100AR0550	E:550.
G3.507000.100AR0600	E:600.
G3.507000.100AR0650	E:650.
G3.507000.100AR0700	E:700.
G3.507000.100AR0750	E:750.
G3.507000.100AR0800	E:800.
G3.507000.100AR0850	E:850.
G3.507000.100AR0900	E:900.
G3.507000.100AR0950	E:950.
G3.507000.100AR1000	E:1000.

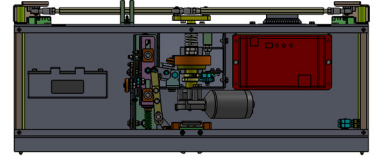
G3  **Sill accessory**



Code	Description
G3.85001	Thrust bearing.
G3.84999	Panel support pin (Set).

3

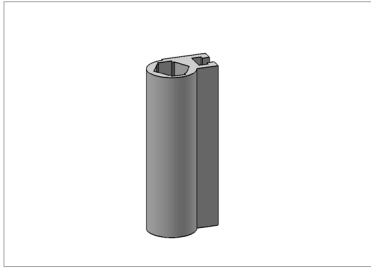
PANELS



G3



Aluminium profile



Code*	Description
G3.PC400.2000AL	AL sill. CH:2000. E<1000. L:1988.
G3.PC400.2000AL.E1000	AL sill. CH:2000. E ≥1000. L:1985.
G3.PC400.2000AR	AR sill. CH:2000. E<1000. L:1982.
G3.PC400.2000AR.E1000	AR sill. CH:2000. E ≥1000. L:1979.
G3.PC400.2100AL	AL sill. CH:2100. E<1000. L:2088.
G3.PC400.2100AL.E1000	AL sill. CH:2100. E ≥1000. L:2085.
G3.PC400.2100AR	AR sill. CH:2100. E<1000. L:2082.
G3.PC400.2100AR.E1000	AR sill. CH:2100. E ≥1000. L:2079.

*Note: The order reference is required.

G3



Handle



Code	Description
G3.60305	Handle for Klefer panels.

G3



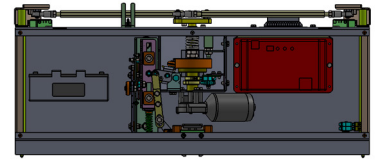
Folding panel guide shoe



Code	Description
G5.506011*	Guide shoes. Upper & lower. (4pcs). *Common for G5 & G3

4

ELECTRONIC COMPONENTS



G3



Electrical wiring



Electronic board F1

Code	Description
G3.57843	Battery wirement L=450.
G5.82777*	Terminal switch wirement. L=250.
G5.82780*	Infringement micro-switch wirement.
G3.78187	Contact connection wire L=1100.
G3.82778	Contact wirement.
G3.82779	Encoder wirement. L=800.

*Common for G5 & G3

Electronic board FDC-01

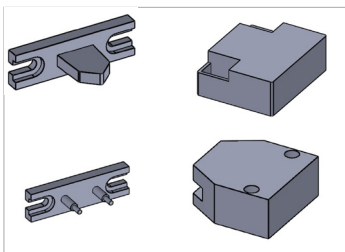
Code	Description
G5.168579*	Wiring electronic board FDC-01
G5.82777*	Terminal switch wirement. L=500.
G5.82780*	Infringement micro-switch wirement.

*Common for G5 & G3

KCE



Electrical contact kit

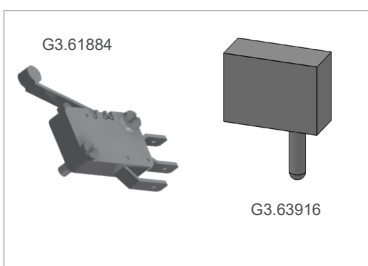


Code	Description
KCE.5000.00000	Electric contact 50mm (Sill 100).
KCE.40CS.00000	Electric contact 40mm (Sill 80).

G3



Terminal switch




Code	Description
G3.61884	Terminal switch.
G3.63916	Infringement microswitch.

G3  **Electronic module**



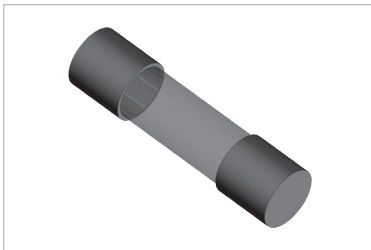
Code	Description
G3.157696	Electronic board FDC-01. Greek-English.
G3.RPL.70455	Electronic board FDC-01. Greek-English (electronic board F1 replacement).

G3  **Battery**



Code	Description
G3.52273	12 V. 2 A.

G3  **Fuse**



Code	Description
G3.63194	Ceramic fuse 2 A (electronic board F1)
G3.167703	Ceramic fuse 3.15 A (electronic board FDC-01)
G3.167704	Ceramic fuse 10 A (electronic board FDC-01)



Sales contacts

General: commercial@klefer.com

www.klefer.com