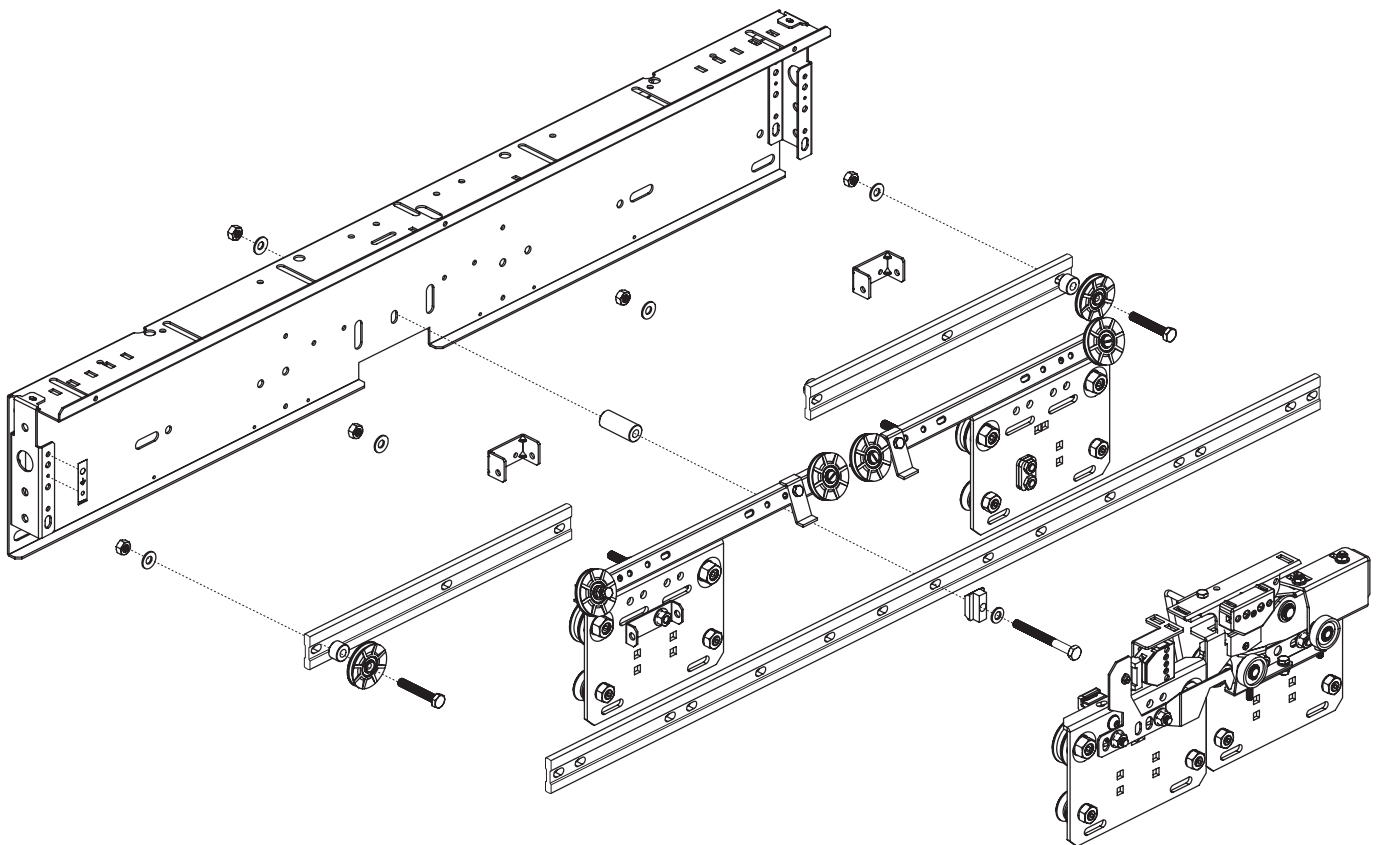


50/11 SPARE PARTS

Automatic horizontal sliding landing door



Multimedia design and production by Klefer.

Klefer, S.A.
Kilkis business park.
61100 GR
Greece
Hellenic Business Registry No: 14504535000.



- Spare part in stock: Available with a minimal period of delivery.



- Spare parts to be manufactured: Need to be fabricated and therefore requires a longer delivery period.

Klefer reserves the right to modify the specification and price of the products in this catalogue without prior notice.

Rate revision according version.
The rates are valid except for typographical mistakes.
The price of packaging is not included.
IVA or VAT not included.

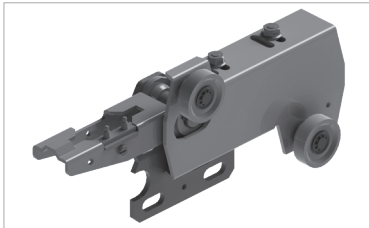
1.1

DOOR MECHANISM


Locking devices



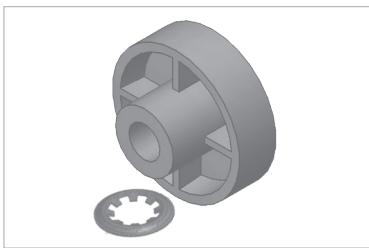
CSP Lock beak-plate support assembly



Code	Description
CSP.5000.R 	IP20 contact.
CSP.5010.R 	IP54 contact.
CSP.500D.R 	IP21 contact. Panoramic.
CSP.50IP.R 	IP54 contact. Panoramic.

 To complete this code, see annexe 13 (Unlocking devices table).

APT Pulling roller accessories set




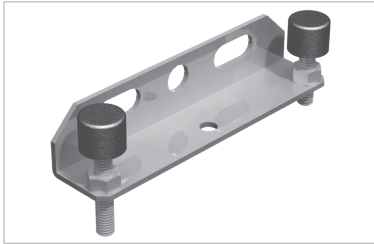
Code	Description
APT.0000.R0000	Outer Ø33 mm, inner Ø8 mm.
APT.00ES.RC400	Outer Ø33 mm, inner Ø10 mm.

CSC Lock contact support assembly

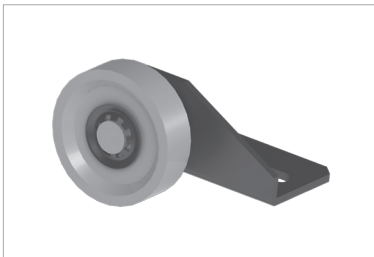


Code	Description
CSC.5000.RC200	C2 (From 08/03/2017).
CSC.5001.RC200	C2 (Until 08/03/2017).
CSC.50IP.RC200	C2. IP54.
CSC.5195.RC400	C4 CO < 1.200. (From 08/03/2017).
CSC.50DE.RC000	C4-C6 CO ≥ 1.200, C8 CO ≥ 1.400. Double lock. (From 08/03/2017).
CSC.5001.RC400	C4 CO ≥ 1200, C6 CO ≥ 1400, C8 CO ≥ 1850. Double lock. (Until 08/03/2017).
CSC.50DI.RC000	C4 CO ≥ 1.200, C6, C8. Double lock. IP54.
CSC.5000.RI000	T2, T3, T4, CO: 950-1400. Left opening. (From 22/03/2017).
CSC.5001.RI000	T2, T3, T4, C4 CO: 600-1150. Left opening. (Until 22/03/2017).
CSC.50IP.RI000	T2-T3-T4-C4-C6 CO ≥ 1200, C8 CO ≥ 1400. Left opening. IP54.
CSC.5000.RD100	T1. Right opening.
CSC.5000.RI100	T1. Left opening.
CSC.50IP.RD100	T1. IP54. Right opening.
CSC.50IP.RI100	T1. IP54. Left opening.
CSC.5000.RD000	Except T1. Right opening. (From 24/02/2017).
CSC.5001.RD000	Except T1. Right opening. (Until 24/02/2017).
CSC.50IP.RD000	Except T1. IP54. Right opening.

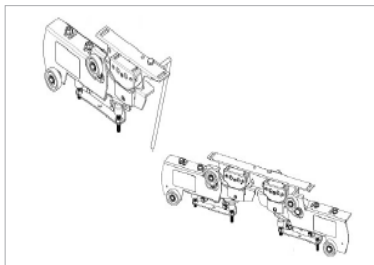
 For central opening operators with double locking device, choose "telescopic right opening" or "telescopic left opening" according to the assembly hand needed.

CST  **Support lock beak set**


Code	Description
CST.5000.RD000	C4-C6 CO \geq 1200, C8 CO \geq 1400, T2-T3-T4. Right opening.
CST.5000.RI000	C4-C6 CO \geq 1200, C8 CO \geq 1400, T2-T3-T4. Left opening.
CST.5000.RD100	T1. Right opening.
CST.5000.RI100	T1 and C2. Left opening.
CST.50E1.RC400	C4 PL \leq 900, C6 PL \leq 1.350, C8 PL \leq 1.800, T4 PL \leq 900. Panoramic cover adaptation.
CST.AP00.RD000	Right opening. Panoramic cover adaptation.
CST.AP00.RI000	Left opening. Panoramic cover adaptation.

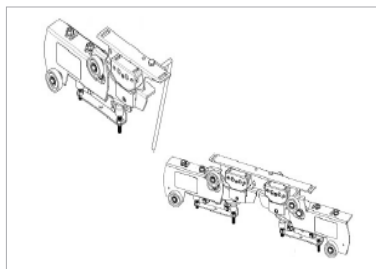
CSA  **Haulage support assembly for panoramic cover adaption.**


Code	Description
CSA.50TP.RD200	T2, T3, T4. Panoramic cover adaptation. Right opening
CSA.50TP.RI200	C2, C4 CO \geq 1200, C6 CO: 1400-1550, C8 CO $>$ 1800, T2, T3, T4. Panoramic cover adaptation. Left opening

KEN  **Lock assembly kit**


Code	Description
KEN.5000.RC200	C2 (From 08/03/2017).
KEN.5001.RC200	C2 (Until 08/03/2017).
KEN.50IP.RC200	C2. IP54. (From 08/03/2017).
KEN.5000.RD100	T1. Right opening.
KEN.5000.RI100	T1. Left opening.
KEN.5000.RD000	T2, T3, T4 CO \geq 1100. Right opening. (From 24/02/2017).
KEN.5001.RD000	T2, T3, T4 CO \geq 1100. Right opening. (Until 24/02/2017).
KEN.50IP.RD000	T2, T3, T4 CO \geq 1100. Right opening. IP54. (From 24/02/2017).
KEN.51IP.RD000	T2, T3, T4 CO \geq 1100. Right opening. IP54. (Until 24/02/2017).
KEN.5000.RI000	T2, T3, T4 CO \geq 1100. Left opening. (From 22/03/2017).
KEN.5001.RI000	T2, T3, T4 CO \geq 1100. Left opening. (Until 22/03/2017).
KEN.50IP.RI000	T2, T3, T4 CO \geq 1100. Left opening. IP54. (From 24/02/2017).
KEN.51IP.RI000	T2, T3, T4 CO \geq 1100. Left opening. IP54. (Until 24/02/2017).
KEN.5060.RD400	T4 CO: 600-800. Right opening. (Until 26/10/2018).
KEN.5060.RI400	T4 CO: 600-800. Left opening. (Until 26/10/2018).
KEN.5085.RD400	T4 CO: 850-900. Right opening.
KEN.5085.RI400	T4 CO: 850-900. Left opening.
KEN.5085.RI400.IP54	T4 CO: 850-900. IP54. Left opening.
KEN.5095.RD400	T4 CO: 950-1000. Right opening.
KEN.5095.RI400	T4 CO: 950-1000. Left opening.
KEN.5060.RC400	C4 CO: 600-700.
KEN.5075.RC400	C4 CO: 750 (From 16/03/2017).
KEN.5175.RC400	C4 CO: 750 (Until 16/03/2017).
KEN.5080.RC400	C4 CO: 800.
KEN.5085.RC400	C4 CO: 850-900.
KEN.5095.RC400	C4 CO: 950-1150 (From 16/03/2017).

KEN Lock assembly kit



Code	Description
KEN.5195.RC400	C4 CO: 950-1150 (Until 16/03/2017).
KEN.50DE.RC400	C4 CO≥1200, C6 CO≥1400, C8 CO≥1850. Double lock. (From 05/2017).
KEN.51DE.RC400	C4 CO≥1200, C6 CO≥1400, C8 CO≥1850. Double lock. (Until 05/2017).
KEN.50DI.RC400	C4 CO≥1200, C6 CO≥1400, C8 CO≥1850. Double lock. IP54. (From 05/2017).
KEN.51DI.RC400	C4 CO≥1200, C6 CO≥1400, C8 CO≥1850. Double lock. IP54. (Until 05/2017).
KEN.50DE.RC600	C6: 1200-1350, C8 CO:1400-1800. Double lock.

URP Lock beak regulation tool



Code	Description
URP.0000.R0000	Lock beak regulation tool.

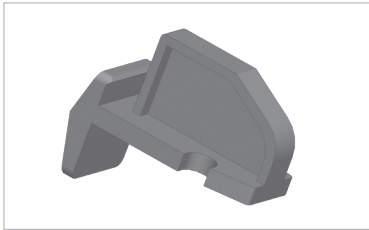
1.2

DOOR MECHANISM

Springs, synchronization, wheels and buffers

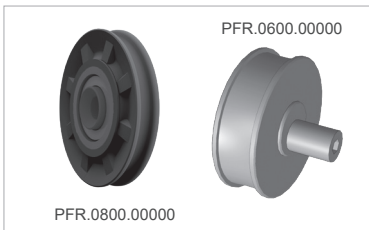


DSR Safety spring fastening support



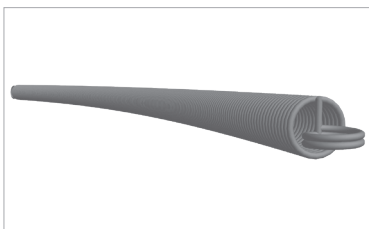
Code	Description
DSR.0000.R0000	Safety spring fastening support.

PFR Wheel




Code	Description
PFR.0500.00000	Concentric. PFR-05. Ø 56 mm.
PFR.0600.00000	Eccentric. PFR-06. Ø 54 mm.
PFR.0700.00000	Synchronization. PFR-07. External Ø 64 mm. Internal Ø 8 mm.
PFR.0800.00000	Synchronization. PFR-08. External Ø 47 mm. Internal Ø 6,2 mm.
PFR.0500.S0000	Silent Concentric. PFR-05. Ø 56 mm.

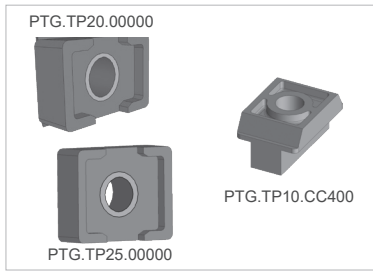
RSR Safety spring



Code	Description
RSR.0000.TD015.00001.575FG.3540	Length: 354 mm.
RSR.0000.TD015.00001.575FG.3740	Length: 374 mm.
RSR.0000.TD015.00001.475FG.3920	Length: 392 mm.
RSR.0000.TD015.00001.575FG.4240	Length: 424 mm.
RSR.0000.TD015.00001.575FG.4250	Length: 425 mm.
RSR.0000.TD015.00001.475FG.4420	Length: 442 mm.
RSR.0000.TD015.00001.575FG.4740	Length: 474 mm.
RSR.0000.TA013.00001.250FG.5600	Length: 560 mm.
RSR.0000.TD015.00001.575FG.5740	Length: 574 mm.
RSR.0000.TA013.00001.250FG.6200	Length: 620 mm.
RSR.0000.TA013.00001.250FG.6850	Length: 685 mm.

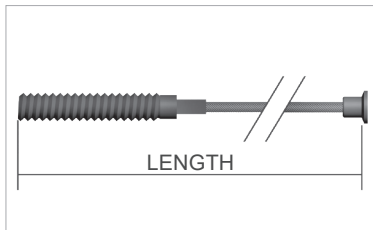
 To associate spring length with CO see annex 5 (Safety spring length table).


PTG Rubber stop kit



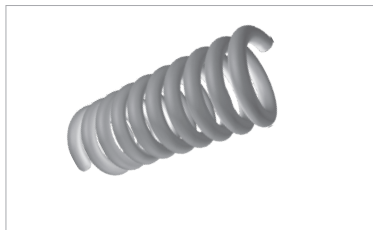
Code	Description
PTG.TP20.00000	20 x 30 mm stop.
PTG.TP25.00000	25 x 30 mm stop.
PTG.TP10.CC400	10 x 30 mm stop.

PCA Synchronization wire



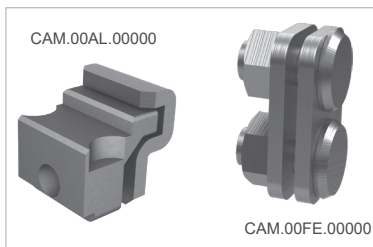
Code	Description
PCA.0000. <input type="text" value="2"/>	Synchronization wire.
<p> To complete this code, see annex 2 (Synchronization wire length by clear opening table). The price shown is valid one linear metre.</p>	

RCA Tensor spring for synchronization wire



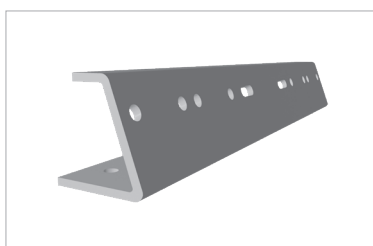
Code	Description
RCA.0000.C0015.00330.925FG.0250	Tensor spring for synchronization wire.

CAM Cable fastener assembly



Code	Description
CAM.00AL.00000	Cable fastener assembly.
CAM.00FE.00000	Cable fastener assembly.

PBR Wheel carrier arm



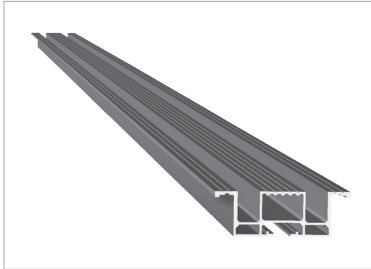
Code	Description
PBR.5000.RC4BC <input type="text" value="1"/>	C4.
PBR.5000.RC6BC <input type="text" value="1"/>	C6.
PBR.5000.RC8BC <input type="text" value="1"/>	C8.
PBR.5000.RT2BC <input type="text" value="1"/>	T2.
PBR.5000.RT3BC <input type="text" value="1"/>	T3.
PBR.5000.RT4BC <input type="text" value="1"/>	T4.
<p> To complete this code, see annex 1 (Clear opening table). The price shown is valid for CO 800 mm.</p>	

2


FRAME



PPS Sill



Code	Description
PPS. (14) . (3) .RC2. (1)	C2.
PPS. (14) . (3) .RC4. (1)	C4.
PPS. (14) . (3) .RC6. (1)	C6.
PPS. (14) . (3) .RC8. (1)	C8.
PPS. (14) . (3) .RR1. (1)	T1. Right opening.
PPS. (14) . (3) .RL1. (1)	T1. Left opening.
PPS. (14) . (3) .RR2. (1)	T2. Right opening.
PPS. (14) . (3) .RL2. (1)	T2. Left opening.
PPS. (14) . (3) .RR3. (1)	T3. Right opening.
PPS. (14) . (3) .RL3. (1)	T3. Left opening.
PPS. (14) . (3) .RR4. (1)	T4. Right opening.
PPS. (14) . (3) .RL4. (1)	T4. Left opening.
PPS. (14) . (3) .RT2. (1)	T2. CO: 700, 800, 900. EN 81-20/50.


 For sill without dust holes in telescopic doors the code is completed with T. (For either .Left or Right opening, sill is the same)

To complete this code, see annex 1 (Clear opening table), annex 3 (Sill options) and annex 14 (Sill materials, finishes and dimension table). The price shown is valid for PL .800 mm

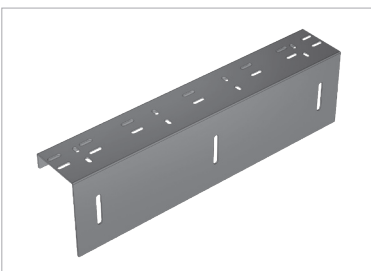
PSS Sill supplement




Code	Description
PSS.6000.R00 (7) (1)	Width 60 mm.
PSS.7000.R00 (7) (1)	Width 70 mm.

 To complete this code, see annex 1 (Clear opening table) and annex 3 (Sill finishes table). The price shown is valid for aluminium sill PL 800 mm.

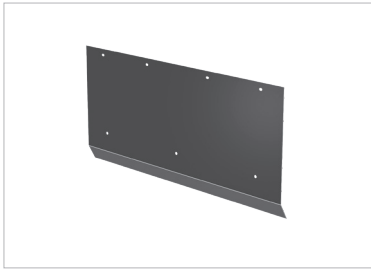
PCF Sill support console



Code	Description
PCF.C3 (8) .R00AL (1)	For AL, AR, HC, XC sill. Load ≤ 3000kg.
PCF.C3 (8) .R00HM (1)	For HM, XM sill. Load ≤ 3000kg.
PCF.C5 (8) .R00AL (1)	For AL, AR, HC, XC sill. 3001 ≤ load ≤ 5000kg.
PCF.C5 (8) .R00HM (1)	For HM, XM sill. 3001 ≤ load ≤ 5000kg.
PCF.C8 (8) .R00AL (1)	For AL, AR, HC, XC sill. 5001 ≤ load ≤ 8000kg.
PCF.C8 (8) .R00HM (1)	For HM, XM sill. 5001 ≤ load ≤ 8000kg.

 To complete this code, see annex 8 (Width) and annex 1 (Clear opening table). The price shown is valid for CO 800 mm. To determine the price, see annex 1.

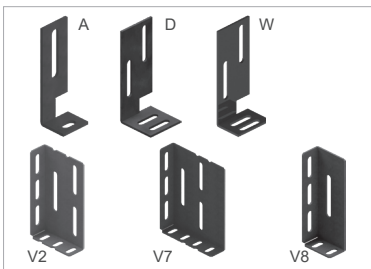
PFA **Toe guard**



Code	Description
PFA.0000.R00FG 1	Standard model. Galvanized steel.
PFA.0000.R00 6 1	Standard model. Stainless steel finishes.

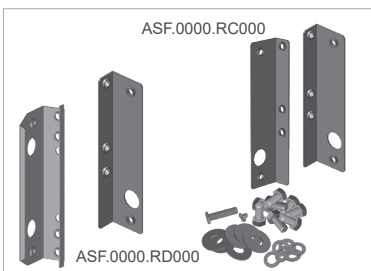
To complete this code, see annex 1 (Clear opening table) and annex 6 (Finishes table). The price shown is valid for PL 800 mm.

AES **Fastening bracket set**



Code	Description
AES.A000.R0000	Type: "A" (1 unit).
AES.D000.R0000	Type: "D" (1 unit).
AES.G000.R0000	Type: "G" (1 unit).
AES.H000.R0000	Type: "H" (1 unit).
AES.K000.R0000	Type: "L" (1 unit).
AES.KE00.R0000	Type: "KE" (1 unit).
AES.M000.R0000	Type: "M" (1 unit).
AES.N001.R0000	Type: "N". CO ≤ 1000.(3 units "F" & 3 units "G" & 2 units "M").
AES.N002.R0000	Type: "N". CO > 1000.(5 units "F" & 5 units "G" & 2 units "M").
AES.O001.R0000	Type: "O". CO ≤ 1000.(3 units "F" & 3 units "H" & 2 units "M").
AES.O002.R0000	Type: "O". CO > 1000.(5 units "F" & 5 units "H" & 2 units "M").
AES.V200.R0000	Type: "V2" (1 unit).
AES.V700.R0000	Type: "V7" (1 unit).
AES.V800.R0000	Type: "V8" (1 unit).
AES.W000.R0000	Type: "W" (1 unit).

ASF **Frame fixing support set**



Code	Description
ASF.0000.RC000	Central opening.
ASF.0000.RD000	Telescopic. Right opening.
ASF.0000.RI000	Telescopic. Left opening.

ACJ **Releaser lock assembly**



Code	Description
ACJ.0000.RD000	C2, T1, T2, T3. Right opening.
ACJ.0000.RI000	C4, C6, C8, T1, T2, T3. Left opening.
ACJ.00LH.RD000	Key in right panel.
ACJ.00LH.RI000	Key in left panel.

ADS Triangular key set



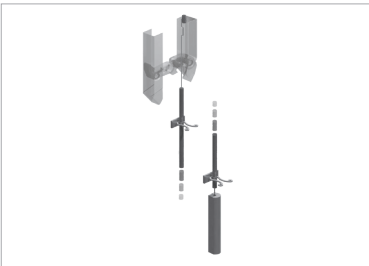
Code	Description
ADS.0011.R0000	Triangular key set (Plastic).
ADS.0071.R0000	Triangular key set (Metallic). L: 710 mm.
ADS.81MK.CT080	Triangular key set (Prudhomme). Chromed. Special hights. L: 80 mm.
ADS.81MK.CT160	Triangular key set (Prudhomme). Chromed. Special hights. L: 160 mm.
ADS.81MK.CT600	Triangular key set (Prudhomme). Chromed. Special hights. L: 600 mm.

ACP Counterweight accessories




Code	Description
ACP.4000.R0000	Counterweight accessories.

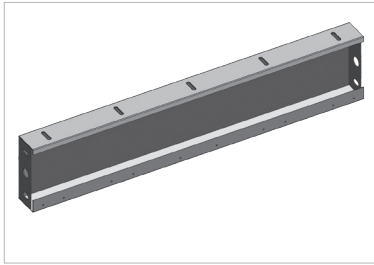
KDM Manual unlocking device



Code	Description
KDM.50.16.R.0D. KO PH	Locking device 160mm. Right opening.
KDM.50.16.R.0I. KO PH	Locking device 160mm. Left & central opening.
KDM.50.10.R.0I. KO PH	Locking device 100mm. C4 CO:600-900mm.

 To complete this code, **KO** refers to Extra Carriage, the code is 000 except Full Glass 50/11
.VF PH refers to Panel Height

PDI  Header



Code	Description
C2	
PDI. (M) 00.RC2 (6) (1) (17) . (15) (18)	Without indicator.
PDI. (M) CS.RC2 (6) (1) (17) . (15) (18)	With indicator.
C4	
PDI. (M) 00.RC4 (6) (1) (17) . (15) (18)	Without indicator.
PDI. (M) CS.RC4 (6) (1) (17) . (15) (18)	With indicator.
C6	
PDI. (M) 00.RC6 (6) (1) (17) . (15) (18)	Without indicator.
PDI. (M) CS.RC6 (6) (1) (17) . (15) (18)	With indicator.
C8	
PDI. (M) 00.RC8 (6) (1) (17) . (15) (18)	Without indicator.
PDI. (M) CS.RC8 (6) (1) (17) . (15) (18)	With indicator.
T1	
PDI. (M) 00.RR1 (6) (1) (17) . (15) (18)	Right opening. Without indicator.
PDI. (M) CS.RR1 (6) (1) (17) . (15) (18)	Right opening. With indicator.
PDI. (M) 00.RL1 (6) (1) (17) . (15) (18)	Left opening. Without indicator.
PDI. (M) CS.RL1 (6) (1) (17) . (15) (18)	Left opening. With indicator.
T2	
PDI. (M) 00.RR2 (6) (1) (17) . (15) (18)	Right opening. Without indicator.
PDI. (M) CS.RR2 (6) (1) (17) . (15) (18)	Right opening. With indicator.
PDI. (M) 00.RL2 (6) (1) (17) . (15) (18)	Left opening. Without indicator.
PDI. (M) CS.RL2 (6) (1) (17) . (15) (18)	Left opening. With indicator.
T3	
PDI. (M) 00.RR3 (6) (1) (17) . (15) (18)	Right opening. Without indicator.
PDI. (M) CS.RR3 (6) (1) (17) . (15) (18)	Right opening. With indicator.
PDI. (M) 00.RL3 (6) (1) (17) . (15) (18)	Left opening. Without indicator.
PDI. (M) CS.RL3 (6) (1) (17) . (15) (18)	Left opening. With indicator.
T4	
PDI. (M) 00.RR4 (6) (1) (17) . (15) (18)	Right opening. Without indicator.
PDI. (M) CS.RR4 (6) (1) (17) . (15) (18)	Right opening. With indicator.
PDI. (M) 00.RL4 (6) (1) (17) . (15) (18)	Left opening. Without indicator.
PDI. (M) CS.RL4 (6) (1) (17) . (15) (18)	Left opening. With indicator.

! To complete this code, see annex 1 (Clear opening table), annex 6 (Materials and finishes table) and annex 17 (Header dimensions table). The price shown is valid for PL 800 mm in epoxy RAL 7032 leatherette standard.

For Telescopic doors $50 \leq HD < 80$ use Right (R) or Left (L) opening.

For Telescopic doors $HD \geq 80$ use T2, T3, T4.

For headers with indicator attach hole position drawing.

For (M) complete the code with below options:

For **T1**: All CO: 00

For **T2**: All CO: 00

For **T3, T4**: CO < 1000: 00

CO \geq 1000: 50

For **C2**: All CO: 50

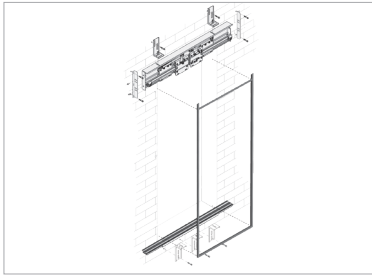
For **C4**: CO < 1000: 00

CO \geq 1000: 50

For **C6, C8**: All CO: 50

NOTE: For special model contact with commercial department.

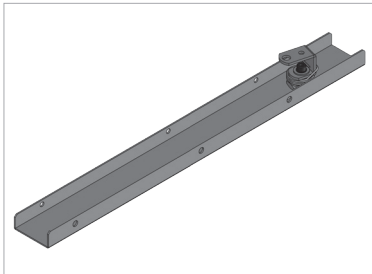
UTM Modernization installing tool



Code	Description
UTM.MD00.R0000. <input type="text" value="H"/> <input type="text" value="1"/>	Modernisation installing tool.

! To complete the code, see annex 1 (Clear opening table). The code should be substituted for the door clear height in mm.
The price shown is valid for CO 800 mm and CH 2.000 mm. To calculate the price, the coefficient should be calculated according H/2.000 formula.

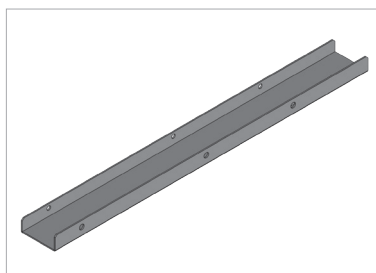
PTP Lightcover with release lock




Code	Description
C4	
PTP.00 <input type="text" value="9"/> .RC4 <input type="text" value="16"/> . <input type="text" value="6"/> <input type="text" value="1"/>	C4 CO < 950. Standard model.
PTP.50 <input type="text" value="9"/> .RC4 <input type="text" value="16"/> . <input type="text" value="6"/> <input type="text" value="1"/>	C4 CO ≥ 950. Standard model.
PTP.5A <input type="text" value="9"/> .RC4 <input type="text" value="16"/> . <input type="text" value="6"/> <input type="text" value="1"/>	Refurbishment model.
C6	
PTP.50 <input type="text" value="9"/> .RC6 <input type="text" value="16"/> . <input type="text" value="6"/> <input type="text" value="1"/>	Standard model.
PTP.5A <input type="text" value="9"/> .RC6 <input type="text" value="16"/> . <input type="text" value="6"/> <input type="text" value="1"/>	Refurbishment model.
C8	
PTP.50 <input type="text" value="9"/> .RC8 <input type="text" value="16"/> . <input type="text" value="6"/> <input type="text" value="1"/>	Standard model.
PTP.5A <input type="text" value="9"/> .RC8 <input type="text" value="16"/> . <input type="text" value="6"/> <input type="text" value="1"/>	Refurbishment model.
T2	
PTP.50 <input type="text" value="9"/> .RR2 <input type="text" value="16"/> . <input type="text" value="6"/> <input type="text" value="1"/>	Standard model. Right opening.
PTP.5A <input type="text" value="9"/> .RR2 <input type="text" value="16"/> . <input type="text" value="6"/> <input type="text" value="1"/>	Refurbishment model. Right opening.
PTP.50 <input type="text" value="9"/> .R L 2 <input type="text" value="16"/> . <input type="text" value="6"/> <input type="text" value="1"/>	Standard model. Left opening.
PTP.5A <input type="text" value="9"/> .R L 2 <input type="text" value="16"/> . <input type="text" value="6"/> <input type="text" value="1"/>	Refurbishment model. Left opening.
T3	
PTP.50 <input type="text" value="9"/> .RR3 <input type="text" value="16"/> . <input type="text" value="6"/> <input type="text" value="1"/>	Standard model. Right opening.
PTP.5A <input type="text" value="9"/> .RR3 <input type="text" value="16"/> . <input type="text" value="6"/> <input type="text" value="1"/>	Refurbishment model. Right opening.
PTP.50 <input type="text" value="9"/> .R L 3 <input type="text" value="16"/> . <input type="text" value="6"/> <input type="text" value="1"/>	Standard model. Left opening.
PTP.5A <input type="text" value="9"/> .R L 3 <input type="text" value="16"/> . <input type="text" value="6"/> <input type="text" value="1"/>	Refurbishment model. Left opening.
T4	
PTP.50 <input type="text" value="9"/> .RR4 <input type="text" value="16"/> . <input type="text" value="6"/> <input type="text" value="1"/>	Standard model. Right opening.
PTP.5A <input type="text" value="9"/> .RR4 <input type="text" value="16"/> . <input type="text" value="6"/> <input type="text" value="1"/>	Refurbishment model. Right opening.
PTP.50 <input type="text" value="9"/> .R L 4 <input type="text" value="16"/> . <input type="text" value="6"/> <input type="text" value="1"/>	Standard model. Left opening.
PTP.5A <input type="text" value="9"/> .R L 4 <input type="text" value="16"/> . <input type="text" value="6"/> <input type="text" value="1"/>	Refurbishment model. Left opening.

! To complete this code, see annex 9 (Light cover contact table), see annex 16 (Intumescent strip), annex 6 (Materials and finishes table) and annex 1 (Clear opening table). The price shown is valid for PL 800 mm in epoxy RAL 7032 leatherette standard and without contact.

CTP |  | **Lightcover without release lock**



Code	Description
C4	
CTP.0000.RC4 16 . 6 . 1	Standard model.
CTP.00AR.RC4 16 . 6 . 1	Refurbishment model.
C6	
CTP.0000.RC6 16 . 6 . 1	Standard model.
CTP.00AR.RC6 16 . 6 . 1	Refurbishment model.
C8	
CTP.0000.RC8 16 . 6 . 1	Standard model.
CTP.00AR.RC8 16 . 6 . 1	Refurbishment model.
T2	
CTP.0000.RR2 16 . 6 . 1	Standard model. Right opening.
CTP.00AR.RR2 16 . 6 . 1	Refurbishment model. Right opening.
CTP.0000.RL2 16 . 6 . 1	Standard model. Left opening.
CTP.00AR.RL2 16 . 6 . 1	Refurbishment model. Left opening.
T3	
CTP.0000.RR3 16 . 6 . 1	Standard model. Right opening.
CTP.00AR.RR3 16 . 6 . 1	Refurbishment model. Right opening.
CTP.0000.RL3 16 . 6 . 1	Standard model. Left opening.
CTP.00AR.RL3 16 . 6 . 1	Refurbishment model. Left opening.
T4	
CTP.0000.RR4 16 . 6 . 1	Standard model. Right opening.
CTP.00AR.RR4 16 . 6 . 1	Refurbishment model. Right opening.
CTP.0000.RL4 16 . 6 . 1	Standard model. Left opening.
CTP.00AR.RL4 16 . 6 . 1	Refurbishment model. Left opening.
<p> To complete this code, see annex 16 (Intumescent strip), annex 6 (Materials and finishes table) and annex 1 (Clear opening table). The price shown is valid for PL 800 mm in epoxy RAL 7032 leatherette standard.</p>	

3

PANELS

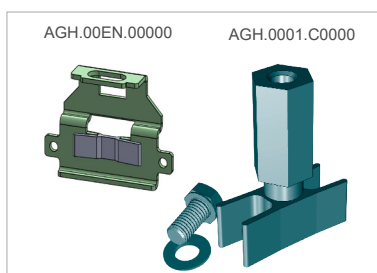


ASH Panel regulator assembly



Code	Description
ASH.0001.C0000	60 mm. (2 units).
ASH.0003.C0000	40 mm. (2 units).

AGH Panel guide shoe assembly



Code	Description
AGH.0001.C0000	16 mm groove (2 units).
AGH.00EN.00000	8 mm groove. EN 81.20/50 (2 units).
AGH.AJP0.00000	8 mm groove. Type plus (Release II), EN 81.20/50 (2 units).

GFH Glass



Code	Description
GFH.GMB0.00000 Dimension X1 Dimension Y1	Laminated glass. Beveled big vision 5+5.
GFH.GME2.00000 Dimension X2 Dimension Y1	Laminated glass. Flush big vision 6 + 6.

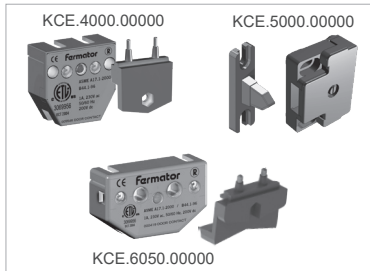
! **Code Dimension X1: PL / number of panels - 40 mm. Code Dimension Y1: HL - 200 mm.**
Code Dimension X2: PL / number of panels - 47 mm. Code Dimension Y1: HL - 200 mm.
Note: In case of obtaining a value of three figures, precede by 0 to complete the code.
 The price shown is valid for glass measurements T2, PL 800 mm and HL 2.000 mm, with a ratio of X and Y = 1

4

ELECTRONIC COMPONENTS

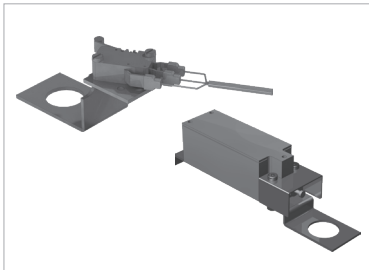


KCE Electrical contact kit



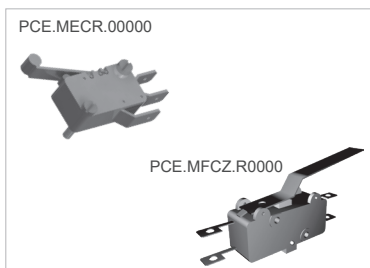
Code	Description
KCE.4000.00000	40 mm. Lateral fixation.
KCE.5000.00000	50 mm.
KCE.6050.00000	60 mm.
KCE.IP54.00000	IP54 contact.

CCE Electrical contact with support assembly



Code	Description
CCE.BE00.R0000	Bistable switch electromagnetic assembly (Berstein).
CCE.BEM0.R0000	Bistable switch mechanic assembly (Berstein).
CCE.MF00.RC400	Bistable mechanical Crouzet. C4.
CCE.MF50.RD000	Bistable mechanical Crouzet. T2-T3. Right opening.
CCE.MF50.RI000	Bistable mechanical Crouzet. T2-T3. Left opening.
CCE.MF50.RC200	Bistable mechanical Crouzet. C2. Model 50/11.
CCE.PR00.RD000	Prudhomme electrical contact. C2. Telescopic right opening.
CCE.PR00.RI000	Prudhomme electrical contact. C4. Telescopic left opening.

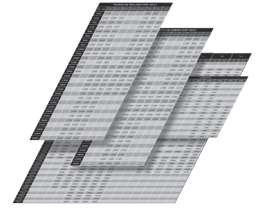
PCE Electrical contact



Code	Description
PCE.MEGR.00000	Monostable microswitch.
PCE.MFCZ.R0000	Manual reset bistable contact.

5

ANNEXES



1

CLEAR OPENING TABLE

CO	CODE	RATIO	CO	CODE	RATIO
600	0600	1,00	2.300	2300	2,88
650	0650	1,00	2.350	2350	2,94
700	0700	1,00	2.400	2400	3,00
750	0750	1,00	2.450	2450	3,06
800	0800	1,00	2.500	2500	3,13
850	0850	1,06	2.550	2550	3,19
900	0900	1,13	2.600	2600	3,25
915	0915	1,14	2.650	2650	3,31
950	0950	1,19	2.700	2700	3,38
1.000	1000	1,25	2.750	2750	3,44
1.050	1050	1,31	2.800	2800	3,50
1.100	1100	1,38	2.850	2850	3,56
1.150	1150	1,44	2.900	2900	3,63
1.200	1200	1,50	2.950	2950	3,69
1.250	1250	1,56	3.000	3000	3,75
1.300	1300	1,63	3.050	3050	3,81
1.350	1350	1,69	3.100	3100	3,88
1.400	1400	1,75	3.150	3150	3,94
1.450	1450	1,81	3.200	3200	4,00
1.500	1500	1,88	3.250	3250	4,06
1.550	1550	1,94	3.300	3300	4,13
1.600	1600	2,00	3.350	3350	4,19
1.650	1650	2,06	3.400	3400	4,25
1.700	1700	2,13	3.450	3450	4,31
1.750	1750	2,19	3.500	3500	4,38
1.800	1800	2,25	3.550	3550	4,44
1.850	1850	2,31	3.600	3600	4,50
1.900	1900	2,38	3.650	3650	4,56
1.950	1950	2,44	3.700	3700	4,63
2.000	2000	2,50	3.750	3750	4,69
2.050	2050	2,56	3.800	3800	4,75
2.100	2100	2,63	3.850	3850	4,81
2.150	2150	2,69	3.900	3900	4,88
2.200	2200	2,75	3.950	3950	4,94
2.250	2250	2,81	4.000	4000	5,00

To determine the final price it is necessary to multiply the base price by the ratio in the table.

2

SYNCHRONIZATION WIRE LENGTH BY CLEAR OPENING TABLE

CO	CODE / LENGTH							
	C2	C4 ⁽¹⁾	C4 ⁽²⁾	C6	C8	T2	T3	T4
600	02480	02090	00710	-	-	01080	00860	-
650	02680	02180	00730	-	-	01180	00860	00760
700	02880	02280	00760	-	-	01180	00960	00810
750	02980	02480	00810	-	-	01280	00960	00810
800	03180	02580	00810	-	-	01280	01010	00860
850	03380	02780	00860	-	-	01380	01010	00860
900	03580	02880	00910	-	-	01380	01080	00910
950	03780	03030	00960	-	-	01480	01080	00910
1.000	03980	03180	01010	-	-	01480	01180	00960
1.100	04380	03480	01080	00810	-	01580	01280	01010
1.200	04780	-	01080	00810	00710	01680	01280	01060
1.300	05180	-	01180	00860	00760	01780	01380	01180
1.400	05580	-	01180	00960	00760	01880	01480	01180
1.500	05980	-	01280	01010	00810	01980	01480	01280
1.600	06380	-	01280	01010	00810	02080	01580	01280
1.700	06780	-	01380	01080	00860	02180	01680	01380
1.800	07180	-	01380	01080	00910	02280	01680	01380
1.900	07580	-	01480	01180	00960	02380	01780	01480
2.000	07980	-	01480	01180	00960	02480	01880	01480
2.100	-	-	01580	01180	01010	-	01880	-
2.200	-	-	01580	01280	01010	-	01980	-
2.300	-	-	01680	01280	01080	-	02080	-
2.400	-	-	01680	01280	01080	-	02080	-
2.500	-	-	01780	01380	01080	-	-	-
2.600	-	-	01780	01380	01110	-	-	-
2.700	-	-	01880	01480	01180	-	-	-
2.800	-	-	01880	01480	01180	-	-	-
2.900	-	-	01980	01480	01180	-	-	-
3.000	-	-	01980	01580	01280	-	-	-

- To determine the final price it is necessary to multiply the length x 0,0097.
- (1) The dimension is for the synchronization wire between opposite sides of hanger plates.
- (2) The dimension is for the synchronization wire between fast and slow hanger plates.

3

SILL OPTIONS

SILL TYPE	CODE	Increase in the final price (€)
With dust holes	0A	6,30 €
Without dust holes	00	-
Heated with dust holes	HA	241,37 €
Heated without dust holes	H0	241,37 €

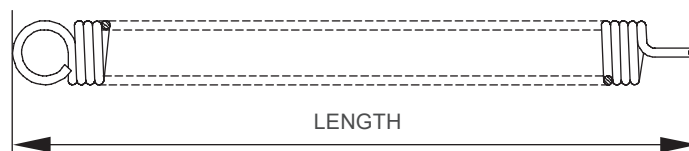
5

SAFETY SPRING LENGTH TABLE

PL	C2	C4	C6	C8 ⁽¹⁾	T2	T3	T4 ⁽²⁾
600	0425	0392	-	-	0374	0354	0392 / 0392
650	0425	0392	-	-	0374	0354	0392 / 0392
700	0425	0392	-	-	0374	0354	0392 / 0392
750	0425	0392	-	-	0374	0354	0392 / 0392
800	0425	0442	-	-	0374	0442	0392 / 0392
850	0425	0442	-	-	0374	0442	0392 / 0392
900	0560	0442	-	-	0374	0442	0392 / 0392
950	0560	0442	-	-	0374	0442	0392 / 0392
1.000	0560	0442	-	-	0374	0442	0392 / 0392
1.050	0560	0442	-	-	0374	0442	0392 / 0392
1.100	0620	0442	-	-	0424	0442	0442 / 0474
1.150	0620	0442	-	-	0424	0442	0442 / 0442
1.200	0620	0374	0354	-	0424	0442	0442 / 0442
1.250	0620	0374	0354	-	0424	0442	0442 / 0442
1.300	0620	0374	0354	-	0474	0442	0442 / 0442
1.350	0620	0374	0354	-	0474	0442	0442 / 0474
1.400	0620	0374	0354	0392 / 0424	0474	0442	0442 / 0474
1.450	0620	0374	0354	0392 / 0424	0474	0442	0442 / 0442
1.500	0685	0374	0354	0392 / 0424	0474	0474	0442 / 0474
1.550	0685	0374	0442	0392 / 0424	0474	0474	0474 / 0474
1.600	0685	0374	0442	0392 / 0424	0474	0474	0574 / 0574
1.650	0685	0374	0442	0392 / 0424	-	0474	0574 / 0574
1.700	0685	0374	0442	0392 / 0424	-	0474	0574 / 0574
1.750	0685	0374	0442	0392 / 0424	-	0474	0574 / 0574
1.800	0685	0374	0442	0392 / 0424	-	0474	0574 / 0574
1.850	0685	0374	0442	0392 / 0424	-	0474	0574 / 0574
1.900	0685	0374	0442	0392 / 0424	-	0474	0574 / 0574
1.950	0685	0374	0442	0392 / 0424	-	0474	0574 / 0574
2.000	0685	0374	0442	0392 / 0424	-	0474	0574 / 0574
2.050	-	0374	0442	0392 / 0424	-	-	-
2.100	-	0374	0442	0392 / 0392	-	-	-
2.150	-	0374	0442	0392 / 0424	-	-	-
2.200	-	0374	0442	0392 / 0392	-	-	-
2.250	-	0424	0442	0392 / 0424	-	-	-
2.300	-	0424	0442	0392 / 0424	-	-	-
2.350	-	0424	0442	0392 / 0424	-	-	-
2.400	-	0424	0442	0392 / 0424	-	-	-
2.450	-	0424	0442	0392 / 0424	-	-	-
2.500	-	0424	0442	0392 / 0424	-	-	-
2.550	-	0424	0442	0392 / 0424	-	-	-
2.600	-	0474	0442	0392 / 0424	-	-	-
2.650	-	0474	0442	0392 / 0424	-	-	-
2.700	-	0474	0442	0392 / 0424	-	-	-
2.750	-	0474	0442	0392 / 0424	-	-	-
2.800	-	0474	0442	0392 / 0424	-	-	-
2.850	-	0474	0442	0392 / 0424	-	-	-
2.900	-	0474	0442	0392 / 0424	-	-	-
2.950	-	0474	0442	0392 / 0424	-	-	-
3.000	-	0474	0442	0392 / 0424	-	-	-

(1) Double lower spring / Double upper spring.

(2) Lower / Upper.



6a

EPOXY FINISHES TABLE

MATERIAL	FINISH		CODE	RATIO
Epoxy	Leatherette standard	RAL 7032	IM	1
		RAL 9016		75,00€ ¹
	Leatherette Other	RAL 1013		75,00€ ¹
		RAL 9001		75,00€ ¹
		RAL 7001		75,00€ ¹
		RAL 7010		75,00€ ¹
		RAL 1001		75,00€ ¹
		RAL 7005		75,00€ ¹
		RAL 7012		75,00€ ¹
		RAL 7030		75,00€ ¹
		RAL 7035		75,00€ ¹
		RAL 8017		75,00€ ¹
		RAL 7040		75,00€ ¹
		Sparkle		PP300
	Textured	Grey		☎
		Grey Metallic		☎

¹ Increase in the final price.

6b

STAINLESS STEEL FINISHES TABLE

MATERIAL	FINISH	CODE	RATIO
Stainless steel	AISI 304	XN	2,10
	AISI 441	MX	1,40
	AISI 304 Mirror	B2	2,45
	AISI 441 Mirror	MB	1,40
	Special finishes	AE	☎

¹ Increase in the final price.

To determine the final price it is necessary to multiply the base price by the ratio in the table.

7

SILL FINISHES TABLE

	FINISH	CODE	RATIO
S	Aluminium (16 mm track)	AL	1,00
	Reinforced aluminium	AR	1,50
	Sheet metal steel	HC	4,30
	Solid steel	HM	6,80
	Sheet metal stainless steel	XC	5,90
	Solid stainless steel	XM	9,75

To determine the final price it is necessary to multiply the base price by the ratio in the table.
Only finishes marked with a **S** are valid for sill between frames

8

SILL SUPPORT CONSOLE WIDTH TABLE

WIDTH	CODE	(€)
55 - 75 mm	55-75	40,04
80 - 125 mm	80-125	42,07
130 - 170 mm	130-170	73,72
175 - 180 mm	175-180	75,90

9

LIGHT COVER CONTACT TABLE

MODEL	CODE	RATIO
Without contact	00	1,00
Monoestable EN 81-21	M2	3,00
Biestable EN 81-21 manual reset	MF	4,00
Biestable EN 81-21 electrical reset	BS	7,00
EN 81-71	PR	10

To determine the final price it is necessary to multiply the base price by the ratio in the table.

13

SINGLE LOCKING DEVICE DOORS TABLE

PL	C2	C4	C6	T1		T2		T3		T4		
	Code	Code	Code	Code		Code		Code		Code		
				Right hand	Left hand	Right hand	Left hand	Right hand	Left hand	Right hand	Left hand	
600	C20C	C41R	C6	D10C*	I10C*	D00D	I00D	D00D	I00D	D00D	I00D	
650												
700												
750												C41D
800		C01D	C6	D10C*	I10C*	D00D	I00D	D00D	I00D	D00D	I00D	
850												
900		C40D	C01D	C6	D10C*	I10C*	D00D	I00D	D00D	I00D	D00D	I00D
950												
1.000												
1.050												
1.100												
1.150												
1.200												
1.250												
1.300												
1.350												
1.400												
1.450												
1.500												
1.550												
1.600												
1.650												
1.700												
1.750												
1.800												
1.850												
1.900												
1.950												
2.000												

It follows on page 21 →

13

DOUBLE LOCKING DEVICE DOORS TABLE

PL	Code						
	C4		C6		C8		
	Right hand	Left hand	Right hand	Left hand	Right hand	Left hand	
1.200	CDDD ^{(*)(**)}	CIDD ^{(*)(**)}	CDED	CIED*			
1.250							
1.300							
1.350							
1.400							
1.450							
1.500							
1.550							
1.600							
1.650							
1.700							
1.750							
1.800							
1.850							
1.900							
1.950							
2.000							
2.050							
2.100							
2.150							
2.200			CDDD ^{(*)(**)}	CIDD ^{(*)(**)}			
2.250							
2.300							
2.350							
2.400					CDDD ^{(*)(**)}	CIDD ^{(*)(**)}	
2.450							
2.500							
2.550							
2.600							
2.650							
2.700							
2.750							
2.800							
2.850							
2.900							
2.950							
3.000							

For codes with * the total price is 126,00 €. (IP20)
 For codes with ** the total price is 200.50 €. (IP54)

14

SILL MATERIALS, FINISHES AND DIMENSIONS TABLE

MATERIAL	AISI	OPENING	CHANNEL	CODE	DESCRIPTION	HEATED OPTION	RATIO	
Aluminium	-	C2 - T1	8,2 mm	AL054008	54 mm. Panels 50 mm.	Available	1,00	
		C4 - T2		AL090008	90 mm. Panels 40 + 40 mm.		1,00	
		C6 - T3	14,8 mm	AL135008	135 mm. Panels 40 + 40 + 40 mm.		1,00	
			8,2 mm	AL135015	135 mm. Panels 40 + 40 + 40 mm.		1,00	
Reinforced aluminium	-	C2 - T1	8,2 mm	AR054008	54 mm. Panels 50 mm.		Available	1,50
		C4 - T2		AR090008	90 mm. Panels 40 + 40 mm.			1,50
		C6 - T3	14,8 mm	AR135008	135 mm. Panels 40 + 40 + 40 mm.			1,50
			8,2 mm	AR180008	180 mm. Panels 40 + 40 + 40 + 40 mm.			1,50
Solid iron	-	C2 - T1	14 mm	HM054015	54 mm. Panels 50 mm.	Not available		6,80
		C4 - T2	15 mm	HM090015	90 mm. Panels 40 + 40 mm.			6,80
		C6 - T3		HM135015	135 mm. Panels 40 + 40 + 40 mm.			6,80
		C8 - T4	HM180015	180 mm. Panels 40 + 40 + 40 + 40 mm.	6,80			
Solid stainless steel	-	C2 - T1	14 mm	XM054015	54 mm. Panels 50 mm.		Not available	9,75
		C4 - T2	15 mm	XM090015	90 mm. Panels 40 + 40 mm.			9,75
		C6 - T3		XM135015	135 mm. Panels 40 + 40 + 40 mm.			9,75
		C8 - T4	XM180015	180 mm. Panels 40 + 40 + 40 + 40 mm.	9,75			
Iron metal sheet	-	C2 - T1	15 mm	HC054015	54 mm. Panels 50 mm.	Available		4,30
		C4 - T2	14,8 mm	HC090015	90 mm. Panels 40 + 40 mm.			4,30
		C6 - T3		HC135015	135 mm. Panels 40 + 40 + 40 mm.			4,30
		C8 - T4	HC180015	180 mm. Panels 40 + 40 + 40 + 40 mm.	4,30			
Sheet metal stainless steel	304	C2 - T1	15 mm	HC054015	54 mm. Panels 50 mm.		Available	7,07
		C4 - T2	14,8 mm	HC090015	90 mm. Panels 40 + 40 mm.			7,07
		C6 - T3		HC135015	135 mm. Panels 40 + 40 + 40 mm.			7,07
		C8 - T4	HC180015	180 mm. Panels 40 + 40 + 40 + 40 mm.	7,07			

NOTE: In case of EN 81.20/50 Release II complete at the end of the code R2. (From October 2020)

To determine the final price it is necessary to multiply the base price by the ratio in the table.

15

IP54

OPTION	CODE
Without IP54	00
With IP54	IP

16

INTUMESCENT STRIP

OPTION	CODE	RATIO
Without Intumescent strip	00	1,00
With Intumescent strip	EI	+13 €

17

HEADER DIMENSIONS TABLE

FRAME DEPTH	HEADER HIGH	CODE	RATIO
20	210	0210.020	1,15
25	210	0210.025	1,15
60	50	0050.060	1,15
	80	0080.060	1,15
	100	0100.060	1,15
	210	0210.060	1
	265	0265.060	1,15
70	50	0050.070	1,15
	120	0120.070	1,15
	210	0210.070	1
	265	0265.070	1,15
155	210	0210.155	1

18

JAMB CABINET TABLE

OPTION	CODE
Door without jamb cabinet	00
Door with jamb cabinet	WI / WD / WF



Sales contacts

General: commercial@klefer.com

www.klefer.gr