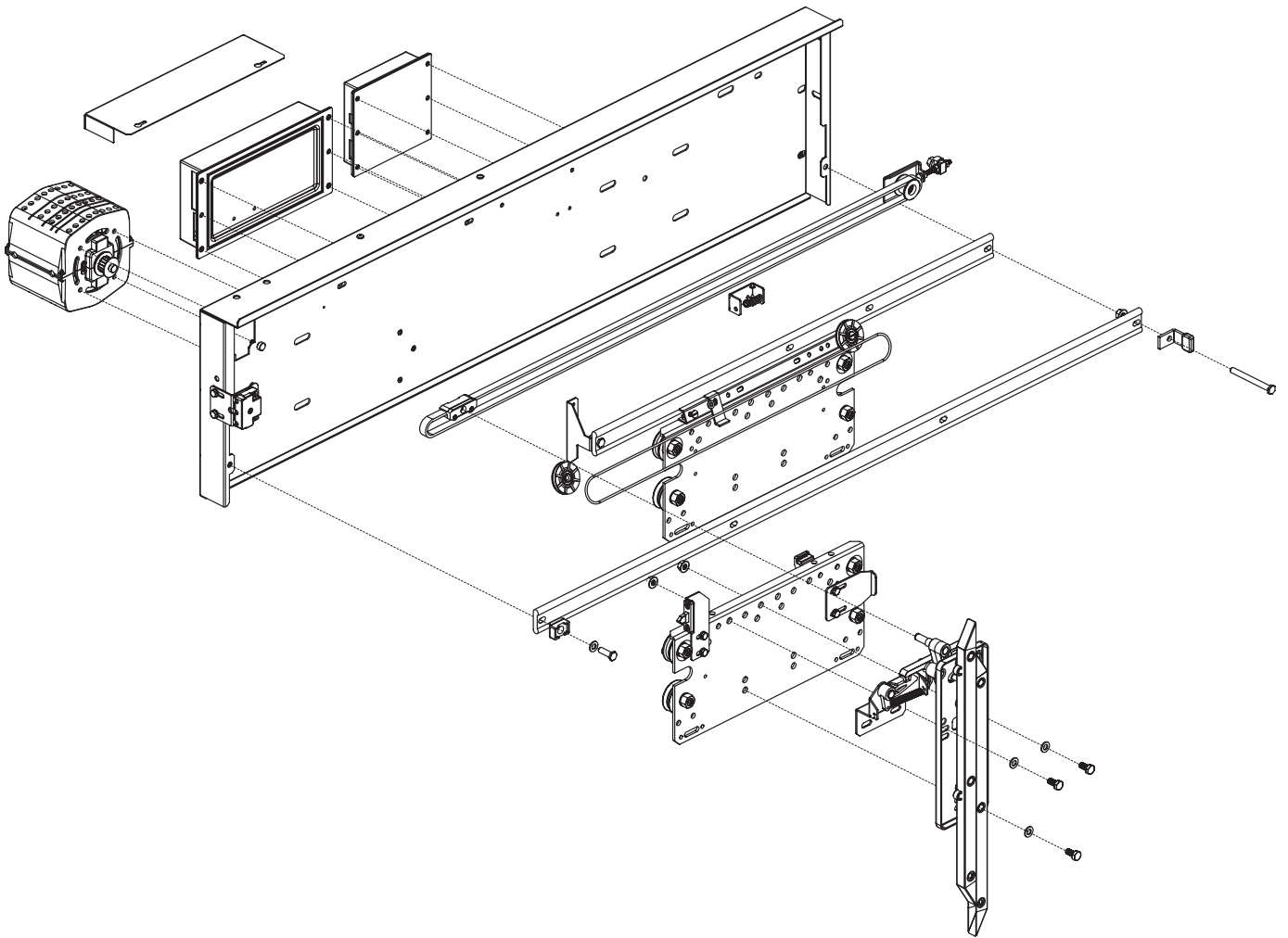


40/10 VF SPARE PARTS

Automatic horizontal sliding car door



Multimedia design and production by Klefer.

Klefer, S.A.
Kilkis business park.
61100 GR
Greece
Hellenic Business Registry No: 14504535000.



- Spare part in stock: Available with a minimal period of delivery.



- Spare parts to be manufactured: Need to be fabricated and therefore requires a longer delivery period.

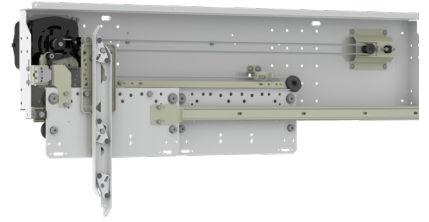
Klefer reserves the right to modify the specification and price of the products in this catalogue without prior notice.

Rate revision according version.
The rates are valid except for typographical mistakes.
The price of packaging is not included.
IVA or VAT not included.

1.1

DOOR OPERATOR

Traction parts



CMT



Motor

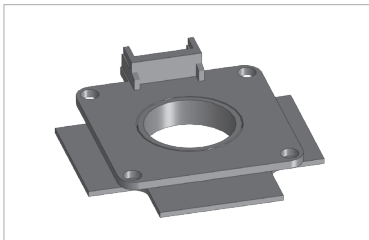


Code	Description
CMT.VF0002	IP21 model without encoder and pulley HTD.
CMT.VFE001	IP21 model with encoder and pulley HTD.
CMT.VF0005	IP54 model without encoder and pulley HTD.
CMT.VFE004	IP54 model with encoder and pulley HTD.
CMT.VFE007	IP54 increased safety model with encoder and pulley HTD.
CMT.VFE006	IP65 model with encoder and pulley HTD.
CMT.VF0067	IP21 model without encoder and thermal protection and pulley HTD.
CMT.VFE066	IP21 model with encoder and thermal protection and pulley HTD.
CMT.VF00AB	IP54 model without encoder and thermal protection and pulley HTD.
CMT.VFE0AA	IP54 model with encoder and thermal protection and pulley HTD.

VMT



Encoder

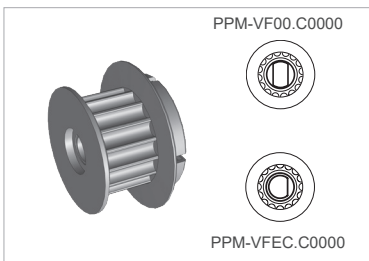


Code	Description
VMT.VFEN.C0000	Encoder.

PPM

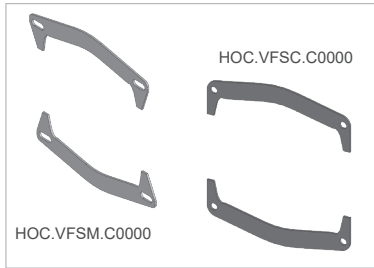


Motor pulley



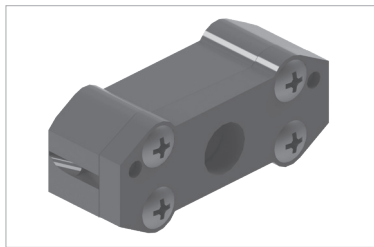
Code	Description
PPM.VF00.C0000	With standard axis (until march 2010).
PPM.VFEC.C0000	With conical axis (from march 2010).

HOC  **Motor support**



Code	Description
HOC.VFSC.C0000	Motor support without regulation VF (2 units).
HOC-VFSM.C00BC	Motor support with regulation VF (Double motor) (2 units).

CHT  **Toothed belt base assembly**




Code	Description
CHT.VFRF.C0000	Toothed belt base assembly HTD (Reinforced).

BHT  **RPP5 toothed belt by opening door**




Code	Description
BHT.VFRP.CC200 <input type="text" value="1"/>	C2.
BHT.VFRP.CC400 <input type="text" value="1"/>	C4.
BHT.VFRP.CT100 <input type="text" value="1"/>	T1.
BHT.VFRP.CT200 <input type="text" value="1"/>	T2.
BHT.VFRP.CT300 <input type="text" value="1"/>	T3.

 To complete this code, see annexe 1 (Clear opening table). The price shown is valid for CO 800 mm.

BHT  **RPP5 toothed belt by meters**



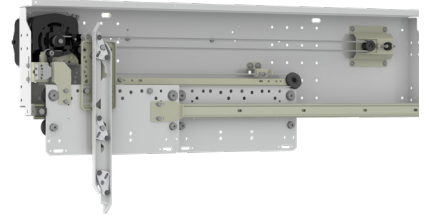
Code	Description
BHT.VFRP.C0000 <input type="text" value="Quantity"/>	Toothed belt RPP5.

 In Quantity field, show the meters needed preceded by 0 until complete 4 figures.
The price shown is valid for one meter.

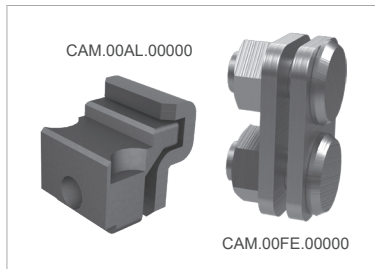
1.2

DOOR OPERATOR

Synchronization

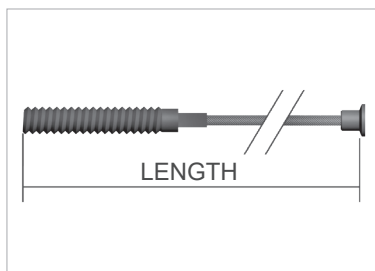




CAM Cable fastener assembly



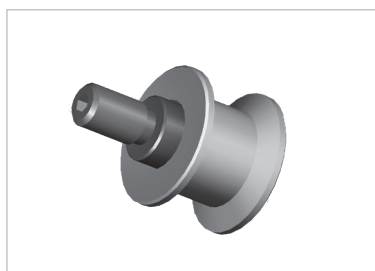
Code	Description
CAM.4V9I.CT300	T3 90 mm sill intermediate carriage.
CAM.4V9R.CT300	T3 90 mm sill fast carriage.
CAM.00AL.00000	Cable fastener assembly.
CAM.00FE.00000	Cable fastener assembly.

PCA Synchronization wire



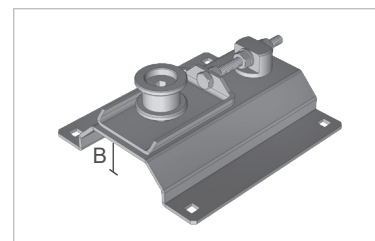
Code	Description
PCA.0000.  ②	Synchronization wire.
 To complete this code, see annexe 2 (Synchronization wire length by clear opening table). The price shown is valid for one meter.	

PPR Idle pulley





Code	Description
PPR.VF00.C0000	Idle pulley.

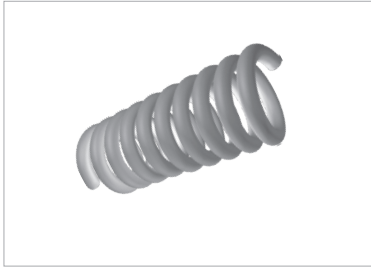
CPR Idle pulley tensor assembly



Code	Description
CPR.VF54.CC200	54 mm sill.
CPR.4V70.CC470	C4. 70 mm sill. B: 25 mm.
CPR.VF90.CC400	C4. 90 mm sill. B: 35 mm.
CPR.VF70.C0000	T2. 70 mm sill. B: 25 mm.
CPR.VF90.C0000	T2. 90 mm sill. B: 35 mm.
CPR.VF90.CT3ST	T3 CO < 1000 mm. 90 mm sill. . B: 51 mm.
CPR.VF90.CT300	T3 PL ≥ 1000 mm. 90 mm sill. . B: 51 mm.

 For 54 mm sill assembly is supplied without support.

RCA  **Tensor spring for synchronization wire**

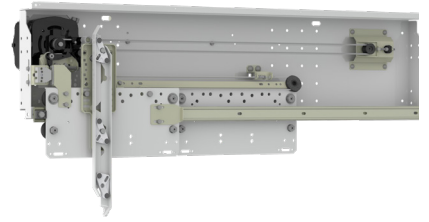


Code	Description
RCA.0000.C0015.00330.925FG.0250	Tensor spring for synchronization wire.

1.3

DOOR OPERATOR

Acting parts



CSK



Clutch assembly

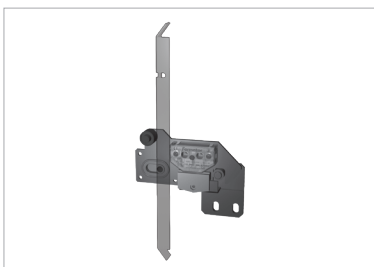


Code	Description
CSK.VF00.CD000	Standard. Right opening and central opening with double locking device.
CSK.VF00.CI000	Standard. Left and central opening.
CSK.VFES.CC400	C4. CO:600.
CSK.VF00.CC400	C4. CO 650 - 915 mm.
CSK.D005.CD000	Displaced 50 mm. Right opening.
CSK.D005.CI000	Displaced 50 mm. Left opening.
CSK.D010.CD000	Displaced 100 mm. Right opening.
CSK.D010.CI000	Displaced 100 mm. Left opening.
CSK.D015.CD000	Displaced 150 mm. Right opening.
CSK.D015.CI000	Displaced 150 mm. Left opening.
CSK.ESA1.CD000	Action area 100 mm. Right opening.
CSK.ESA1.CI000	Action area 100 mm. Left opening.
CSK.VFCD.CD000	Standard with spring. C4 CO \geq 1200, C6-C8.
CSK.VFDM.CD000	Standard with spring. Arm 560. C4 CO \geq 1200, C6-C8.

CSL



Car locking device assembly

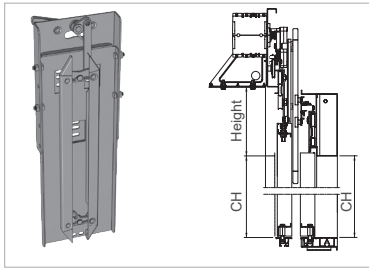


Code	Description
CSL.4V00.CC200	C2 54 mm sill.
CSL.4V00.CC400	C4 90 mm sill.
CSL.4V70.CC400	C4 70 mm sill.
CSL.4V00.CD200	T2 90 mm sill. Right opening.
CSL.4V70.CD200	T2 70 mm sill. Right opening.
CSL.4V00.CI200	T2 90 mm sill. Left opening.
CSL.4V70.CI200	T2 70 mm sill. Left opening.
CSL.4V90.CD300	T3 90 mm sill. Right opening.
CSL.4V00.CD300	T3 135 mm sill. Right opening.
CSL.4V90.CI300	T3 90 mm sill. Left opening.
CSL.4V00.CI300	T3 135 mm sill. Left opening.

CSK



Q model clutch assembly for special height cars

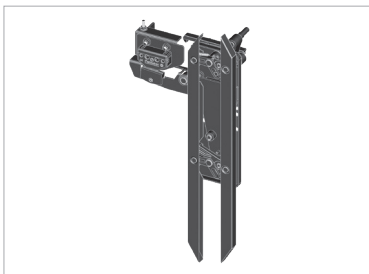


Code	Description
CSK.Q001.CD000	Displaced 100 mm. Height: 320 mm. Right opening.
CSK.Q002.CD000	Displaced 150 mm. Height: 370 mm. Right opening.
CSK.Q003.CD000	Displaced 200 mm. Height: 420 mm. Right opening.
CSK.Q004.CD000	Displaced 250 mm. Height: 470 mm. Right opening.
CSK.Q005.CD000	Displaced 300 mm. Height: 520 mm. Right opening.
CSK.Q006.CD000	Displaced 350 mm. Height: 570 mm. Right opening.
CSK.Q007.CD000	Displaced 400 mm. Height: 620 mm. Right opening.
CSK.Q008.CD000	Displaced 450 mm. Height: 670 mm. Right opening.
CSK.Q009.CD000	Displaced 500 mm. Height: 720 mm. Right opening.
CSK.Q010.CD000	Displaced 550 mm. Height: 770 mm. Right opening.
CSK.Q011.CD000	Displaced 600 mm. Height: 820 mm. Right opening.
CSK.Q012.CD000	Displaced 650 mm. Height: 870 mm. Right opening.
CSK.Q013.CD000	Displaced 700 mm. Height: 920 mm. Right opening.
CSK.Q014.CD000	Displaced 750 mm. Height: 970 mm. Right opening.
CSK.Q015.CD000	Displaced 800 mm. Height: 1.020 mm. Right opening.
CSK.Q016.CD000	Displaced 850 mm. Height: 1.070 mm. Right opening.
CSK.Q001.CI000	Displaced 100 mm. Height: 320 mm. Left opening.
CSK.Q002.CI000	Displaced 150 mm. Height: 370 mm. Left opening.
CSK.Q003.CI000	Displaced 200 mm. Height: 420 mm. Left opening.
CSK.Q004.CI000	Displaced 250 mm. Height: 470 mm. Left opening.
CSK.Q005.CI000	Displaced 300 mm. Height: 520 mm. Left opening.
CSK.Q006.CI000	Displaced 350 mm. Height: 570 mm. Left opening.
CSK.Q007.CI000	Displaced 400 mm. Height: 620 mm. Left opening.
CSK.Q008.CI000	Displaced 450 mm. Height: 670 mm. Left opening.
CSK.Q009.CI000	Displaced 500 mm. Height: 720 mm. Left opening.
CSK.Q010.CI000	Displaced 550 mm. Height: 770 mm. Left opening.
CSK.Q011.CI000	Displaced 600 mm. Height: 820 mm. Left opening.
CSK.Q012.CI000	Displaced 650 mm. Height: 870 mm. Left opening.
CSK.Q013.CI000	Displaced 700 mm. Height: 920 mm. Left opening.
CSK.Q014.CI000	Displaced 750 mm. Height: 970 mm. Left opening.
CSK.Q015.CI000	Displaced 800 mm. Height: 1.020 mm. Left opening.
CSK.Q016.CI000	Displaced 850 mm. Height: 1.070 mm. Left opening.

CDL



Contact and lock clutch assembly

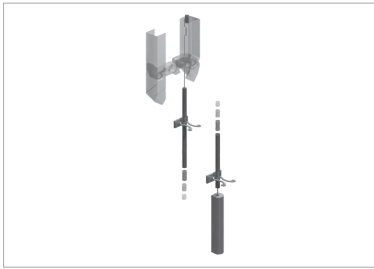



Code	Description
CDL.VF00.CC200	C2.
CDL.4V00.CC400	C4 CO 600 - 900 mm 90 mm sill.
CDL.4V70.CC400	C4 CO 600 - 915 mm 70 mm sill.
CDL.4V7E.CC400	C4 CO from 950 mm 70 mm sill.
CDL.VF00.CD000	T1, T2, T3, T4. Right opening.
CDL.VF00.CI000	T1, T2, T3, T4. Left opening.
CDL.VF58.CC200	Arm 580 mm. C2.
CDL.4V58.CC400	Arm 580 mm. C4 CO 600 - 900 mm.
CDL.VF00.CC400	C4 CO 950 - 1100 mm.
CDL.VFES.CC400	C4 CO ≥ 1150 mm.
CDL.VF58.CC401	Arm 580 mm. C4 CO 950 - 1100 mm.
CDL.VF58.CC400	Arm 580 mm. C4 CO ≥ 1150 mm.
CDL.VF58.CD000	Arm 580 mm. T1, T2, T3, T4. Right opening.
CDL.VF58.CI000	Arm 580 mm. T1, T2, T3, T4. Left opening.



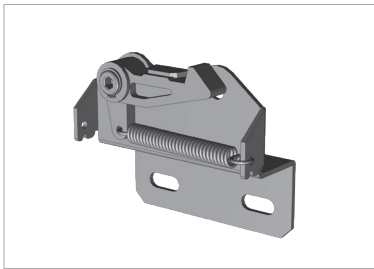
In case of CDL IP54 please contact with Commercial sales.

KDM Manual unlocking device



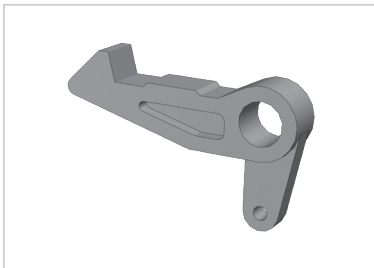
Code	Description
KDM.40.00.C.0D. KO PH	(CDL). Right opening.
KDM.40.00.C.0I. KO PH	(CDL). Left & central opening.
<p> To complete this code, KO refers to Extra Carriage, the code is 000 except Full Glass 40/10 VF, PH refers to Panel Height.</p>	

CTR Stopping retainer assembly



Code	Description
CTR.VF54.CC200	C2 54 mm sill.
CTR.VF70.CC400	C4 70 mm sill.
CTR.VF90.CC400	C4 CO 600 - 915 mm 90 mm sill.
CTR.VF91.CC400	C4 CO 950 - 1.150 mm 90 mm sill.
CTR.VF92.CC400	C4 CO > 1.150 mm 90 mm sill.
CTR.VF54.CD000	T1 54 mm sill. Right opening.
CTR.VF54.CI000	T1 54 mm sill. Left opening.
CTR.VF00.CD200	T2 90 mm sill. Right opening.
CTR.VF00.CI200	T2 90 mm sill. Left opening.

PTR Stopping retainer trigger



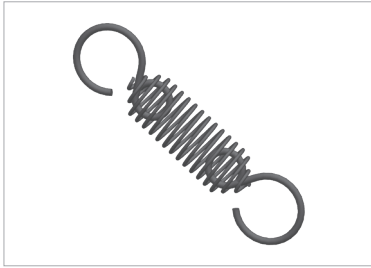
Code	Description
PTR.VF00.C0000	Stopping retainer trigger.

DSK Pulling trigger



Code	Description
DSK.VFGA.C0000	Pulling trigger.
DSK.00BA.C0000	Pulling rod.
DSK.VFCC.C0000	Pulling rod. CDL.

RSK  **Clutch assembly spring**



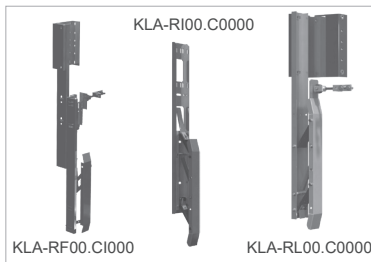
Code	Description
RSK.VF00.C0000	Pulling trigger spring.

RSK  **Connecting rod spring**




Code	Description
RSK.00BP.CD200	Right hand clutch.
RSK.00BP.CI200	Left hand clutch.

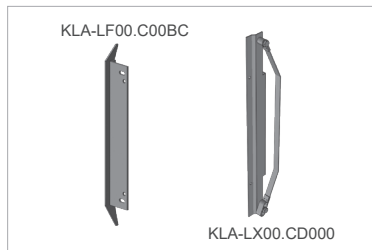
KLA  **Drive retractable cam kit**



Code	Description
KLA.RF00.CD000 <input checked="" type="checkbox"/>	Frontal. Right hand (For left opening, hinged semiautomatic doors).
KLA.RF00.CI000 <input checked="" type="checkbox"/>	Frontal. Left hand (For right opening, hinged semiautomatic doors).
KLA.RI00.C0000 <input checked="" type="checkbox"/>	Inverted lateral retractable.
KLA.RL00.C0000 <input checked="" type="checkbox"/>	Lateral retractable.
KLA.RIA1.C0000 <input checked="" type="checkbox"/>	Inverted lateral retractable, acting zone 100 mm.

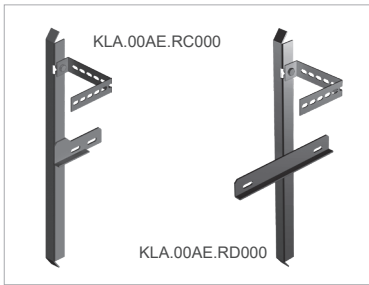
 Code X: Drive height in mm from the centre of the cam to the sill. If standard (1.850 mm), indicate 1850. For other heights increase in 100 by 100 mm.

KLA  **Drive fixed cam kit**



Code	Description
KLA.LF00.C00BC	Fixed.
KLA.LX00.CD000	Right flexible.
KLA.LX00.CI000	Left flexible.
KLA.LO00.C0000	Fixed type O.
KLA.LFCA.CC000	Fixed. Type C. Central opening.
KLA.LFA1.C00BC	Fixed. Unlocking 100 mm.

KLA  **Landing cam assembly for car door lock with fixed cam**

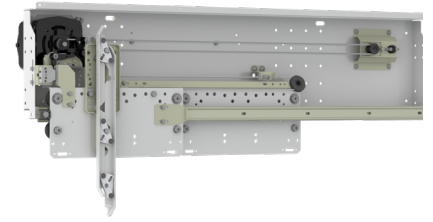


Code	Descripción
KLA.00AE.RC000	Central opening with automatic landing door.
KLA.00AE.RD000	Right side opening with automatic landing door.
KLA.ECSE.R0000	Semiautomatic outside door.

1.4

DOOR OPERATOR

Carriages

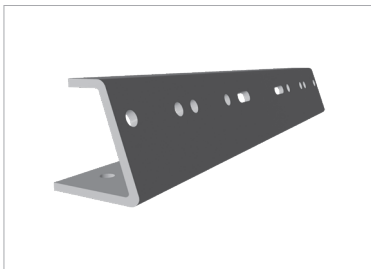


PFR Wheel




Code	Description
PFR.0200.00000	Eccentric lower. PFR-02. T3. 90 mm sill. Ø 48 mm.
PFR.0300.00000	Eccentric. PFR-03. Ø 48 mm.
PFR.0700.00000	Synchronization. PFR-07. External Ø 64 mm. Internal Ø 8 mm.
PFR.0800.00000	Synchronization. PFR-08. External Ø 47 mm. Internal Ø 6,2 mm.
PFR.0900.00000	Synchronization. PFR-09. External Ø 47 mm. Internal Ø 8,2 mm.
PFR.1000.00000	Synchronization. PFR-10. External Ø 42 mm. Internal Ø 6,2 mm.
PFR.6200.00000	Concentric. PFR-62. Ø 48 mm.

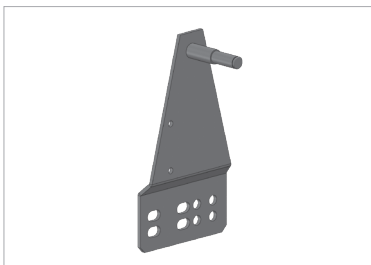
PBR Wheel carrier arm



Code	Description
PBR.4000.CC4BC 	C4. Panel 40 mm.
PBR.4000.CT2BC 	T2. Panel 40 mm.
PBR.4V2D.CT3BC 	T3. Panel 25 mm. Right arm.
PBR.4V2I.CT3BC 	T3. Panel 25 mm. Left arm.
PBR.4000.CT3BC 	T3. Panel 40 mm.

 To complete this code, see annexe 1 (Clear opening table). The price shown is valid for PL 800 mm.

PSA Carriage pulling support

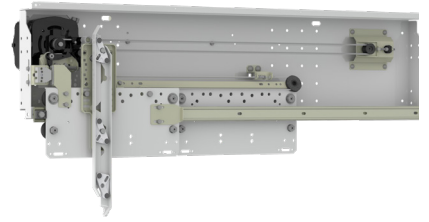


Code	Description
PSA.VF00.CC200	C2, T1. 54 mm sill.
PSA.VF00.CT200	T2 70 mm sill, T2 90 mm sill, T3 CO < 1400 90 mm sill.
PSA.VF00.CT300	T3 ≥ 1400 90 mm sill.
PSA.4V00.CC400	C4 70,90 mm sill.

1.5

DOOR OPERATOR

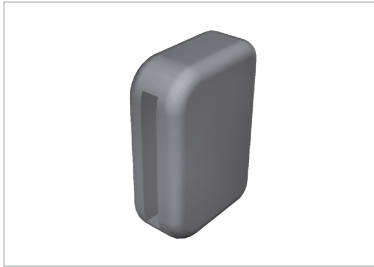
Buffers



PTF



End stroke stop



Code

PTF.0000.C0000

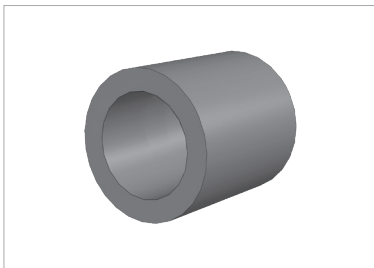
Description

End stroke stop.

DSK



Rod rubber



Code

DSK.VFTB.C0000

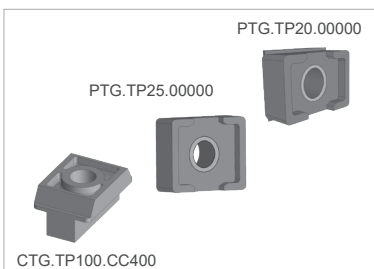
Description

Rod rubber.

PTG



Rubber stop assembling



Code

PTG.TP20.00000

Description

20 x 30 mm stop.

PTG.TP25.00000

25 x 30 mm stop.

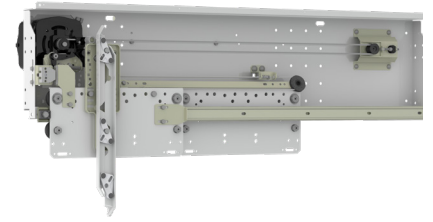
PTG.TP10.CC400

10 x 30 mm stop.

1.6

DOOR OPERATOR

Others



UHT



Belt regulation tool



Code

UHT.VF00.C0000

Description

Belt regulation tool.

AEC



Fastening bracket set



Code

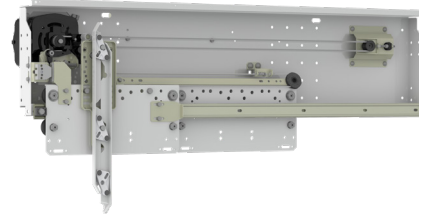
AEC.VF00.C0000

Description

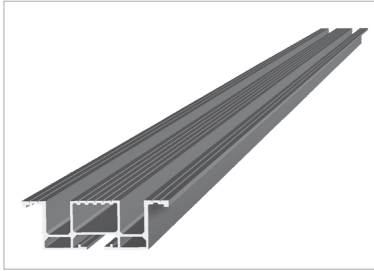
40/10 VF car operators (2 units).

2


ACCESSORIES



PPS Sill

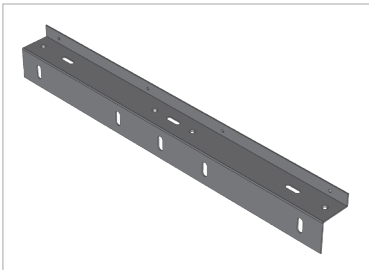


Code	Description
PPS. (14) . (3) . CC2. (1)	C2.
PPS. (14) . (3) . CC4. (1)	C4.
PPS. (14) . (3) . CR1. (1)	T1. Right opening.
PPS. (14) . (3) . CL1. (1)	T1. Left opening.
PPS. (14) . (3) . CR2. (1)	T2. Right opening.
PPS. (14) . (3) . CL2. (1)	T2. Left opening.
PPS. (14) . (3) . CR3. (1)	T3. Right opening.
PPS. (14) . (3) . CL3. (1)	T3. Left opening.
PPS. (14) . (3) . CT2. (1)	T2. CO: 700, 800, 900. EN 81-20/50.


 For sill without dust holes in telescopic doors the code is completed with T. (For either Left or Right opening, sill is the same).

To complete this code, see annex 1 (Clear opening table), annex 3 (Sill options) and annex 14 (Sill materials, finishes and dimension table). The price shown is valid for PL 800 mm.

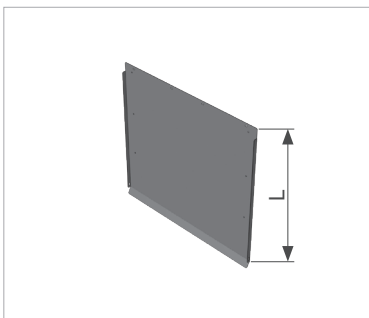
PAC Sill support




Code	Description
PAC.CO54.CC2IM (1)	For 54 mm sill, with evacuation slots.
PAC.HM54.CC2IM (1)	For 54 mm solid iron sill, with evacuation slots.
PAC.CO90.CT2IM (1)	For 90 mm sill, with evacuation slots.
PAC.HM90.CT2IM (1)	For 90 mm solid iron sill, with evacuation slots.
PAC.CO13.CT3IM (1)	For 135 mm sill, with evacuation slots.
PAC.HM13.CT3IM (1)	For 135 mm solid iron sill, with evacuation slots.

 To complete this code, see annexe 1 (Clear opening table). The price shown is valid for PL 800 mm.

PFA Toe guard



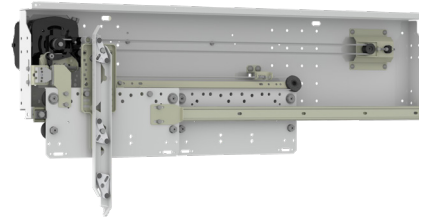
Code	Description
PFA.GM00.C00IM (1)	L: 750 mm. Epoxy.
PFA.GM00.C00XN (1)	L: 750 mm. Stainless steel.

 To complete this code, see annexe 1 (Clear opening table). The price shown is valid for PL 800 mm.

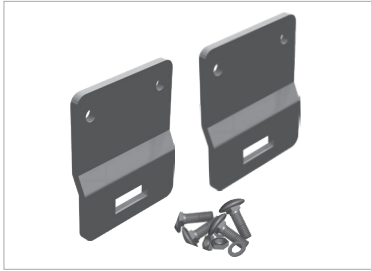


3

PANELS



ASH Carriage supplement



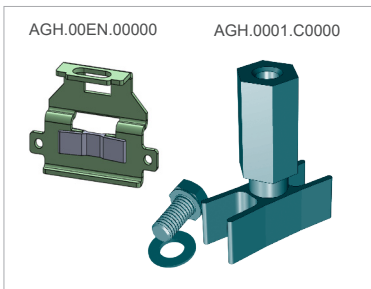
Code	Description
ASH.GM10.C0000	100 mm with fasteners (2 units).
ASH.GM15.C0000	150 mm with fasteners (2 units).

ASH Panel regulator support



Code	Description
ASH.0001.C0000	60 mm. (2 units).
ASH.0002.C0000	100 mm. (2 units).
ASH.0003.C0000	40 mm. (2 units).
ASH.0008.C0000	T3 90 mm sill. 100 mm. (2 units).

AGH Panel guide shoe assembly



Code	Description
AGH.0001.C0000	16 mm groove (2 units).
AGH.0006.C0000	Full glass panel dating from before 2008 (2 units).
AGH.00EN.00000	8 mm groove. EN 81.20/50 (2 units).
AGH.0002.C0000	T3 90 mm sill. 8 mm groove (2 units).
AGH.0003.C0000	T2, C4 70 mm sill. Height 30 mm. 8 mm groove (2 units).
AGH.0004.C0000	T2, C4 70 mm sill. Height 20 mm. 8 mm groove (2 units).
AGH.0005.C0000	T3 90 mm sill. 15 mm groove (2 units).
AGH.AJP0.00000	8 mm groove. Type plus (Release II). EN 81.20/50 (2 units).

GFH Glass

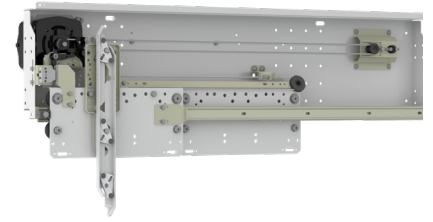


Code	Description
GFH.GMB0.00000	Dimension X1 Dimension Y1 Laminated glass. Beveled big vision 5+5.
GFH.GME2.00000	Dimension X2 Dimension Y1 Laminated glass. Flush big vision 6 + 6.

! **Code Dimension X1:** PL / number of panels - 40 mm. **Code Dimension Y1:** HL - 200 mm.
Code Dimension X2: PL / number of panels - 47 mm. **Code Dimension Y1:** HL - 200 mm.
Note: In case of obtaining a value of three figures, precede by 0 to complete the code.
 The price shown is valid for glass measurements T2, PL 800 mm and HL 2.000 mm, with a ratio of X and Y = 1.

4

ELECTRONIC COMPONENTS

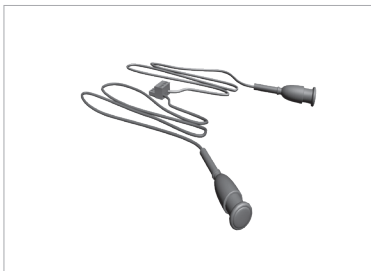


WCE Electrical wiring



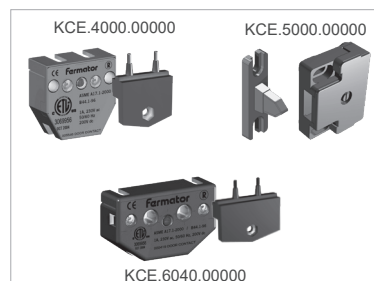
Code	Description
WCE.SRSC.S20HK.0550	Series. Without circuit. L: 550 mm.
WCE.SRSC.S20HK.0885	Series. Without circuit. L: 885 mm.
WCE.AM00.S42HK.2520	Motor extension. L: 2.520 mm.
WCE.AM00.S42HK.4020	Motor extension. L: 4.020 mm.
WCE.EN00.S42A4.0500	Encoder. L: 500 mm.
WCE.CB00.S21HK.0450	Battery connection. L: 450 mm.

CFT Optical safety devices



Code	Description
CFT.FC00.C0000	Photocell. 3.000 mm wire length.
CFT.FCDM.C0000	Photocell. 5.000 mm wire length.

KCE Electrical contact kit



Code	Description
KCE.4000.00000	40 mm.
KCE.40CS.00000	40 mm.
KCE.5000.00000	50 mm.
KCE.6040.00000	60 mm.
KCE.IP54.00000	IP54 contact.

BCV |  | **Connector**


Code	Description
BCV.CO00.S0502	5 mm and 2 paths.
BCV.CO00.S0504	5 mm and 4 paths.
BCV.CO00.S0505	5 mm and 5 paths.
BCV.CO00.S0512	5 mm and 12 paths.
BCV.CO00.S103H	10 mm and 3 paths.

VCI |  | **VF5+ Electronic module**


Code	Description
VCI.V05P.0010.0FLGE	10 Ohms. EN 81-1/2. Left opening. Greek - English.
VCI.V05P.0010.0FRGE	10 Ohms. EN 81-1/2. Right opening. Greek - English.
VCI.V05P.0010.0FLTE	10 Ohms. EN 81-1/2. Left opening. Turkish - English.
VCI.V05P.0010.0FRTE	10 Ohms. EN 81-1/2. Right opening. Turkish - English.
VCI.V05P.0E10.0FLGE	10 Ohms. EN 81-20/50. Left opening. Greek - English.
VCI.V05P.0E10.0FRGE	10 Ohms. EN 81-20/50. Right opening. Greek - English.
VCI.V05P.0E10.0FLTE	10 Ohms. EN 81-20/50. Left opening. Turkish - English.
VCI.V05P.0E10.0FRTE	10 Ohms. EN 81-20/50. Right opening. Turkish - English.

VCI |  | **VF7+ Relay Electronic module**


Code	Description
VCI.V07P.0E10.0FLGE	10 Ohms. EN 81.20/50. Left opening. Greek - English.
VCI.V07P.0E10.0FRGE	10 Ohms. EN 81.20/50. Right opening. Greek - English.
VCI.V07P.0E10.0FLTE	10 Ohms. EN 81.20/50. Left opening. Turkish - English.
VCI.V07P.0E10.0FRTE	10 Ohms. EN 81.20/50. Right opening. Turkish - English.

VCI |  | **VF7+ CAN Electronic module**


Code	Description
VCI.V07P.0E1P.0FLEE	Type CAN . EN 81.20/50. Left opening. Spanish - English.
VCI.V07P.0E1P.0FREE	Type CAN . EN 81.20/50. Right opening. Spanish - English.

VCI  **Emergency power supply**



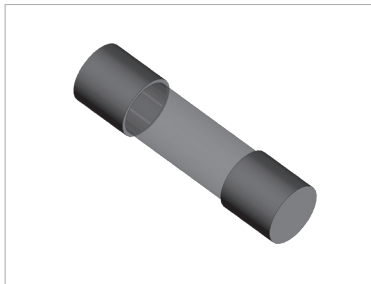
Code	Description
VCI.AESB.C00GE	Without battery. Greek - English.
VCI.AESB.C00TE	Without battery. Turkish - English.

COE  **Battery**



Code	Description
COE.BAT0.2A000	12 V. 2 A.

COE  **Fuse**



Code	Description
COE.FU4A.00000	4 A ceramic fuse.

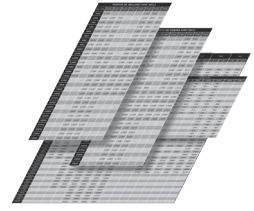
VCP  **Programming console**



Code	Description
VCP.VFCP.C00EN	Programming console. English language.

5

ANNEXES



1

CLEAR OPENING TABLE

PL	CODE	RATIO
500	0500	1,00
550	0550	1,00
600	0600	1,00
650	0650	1,00
700	0700	1,00
750	0750	1,00
800	0800	1,00
850	0850	1,06
900	0900	1,13
915	0915	1,14
950	0950	1,19
1.000	1000	1,25
1.050	1050	1,31
1.100	1100	1,38
1.150	1150	1,44
1.200	1200	1,50
1.250	1250	1,56
1.300	1300	1,63
1.350	1350	1,69
1.400	1400	1,75
1.450	1450	1,81
1.500	1500	1,88
1.550	1550	1,94
1.600	1600	2,00
1.650	1650	2,06
1.700	1700	2,13
1.750	1750	2,19
1.800	1800	2,25
1.850	1850	2,31
1.900	1900	2,38
1.950	1950	2,44
2.000	2000	2,50
2.050	2050	2,56
2.100	2100	2,63
2.150	2150	2,69
2.200	2200	2,75

PL	CODE	RATIO
2.250	2250	2,81
2.300	2300	2,88
2.350	2350	2,94
2.400	2400	3,00
2.450	2450	3,06
2.500	2500	3,13
2.550	2550	3,19
2.600	2600	3,25
2.650	2650	3,31
2.700	2700	3,38
2.750	2750	3,44
2.800	2800	3,50
2.850	2850	3,56
2.900	2900	3,63
2.950	2950	3,69
3.000	3000	3,75
3.050	3050	3,81
3.100	3100	3,88
3.150	3150	3,94
3.200	3200	4,00
3.250	3250	4,06
3.300	3300	4,13
3.350	3350	4,19
3.400	3400	4,25
3.450	3450	4,31
3.500	3500	4,38
3.550	3550	4,44
3.600	3600	4,50
3.650	3650	4,56
3.700	3700	4,63
3.750	3750	4,69
3.800	3800	4,75
3.850	3850	4,81
3.900	3900	4,88
3.950	3950	4,94
4.000	4000	5,00

To determine the final price it is necessary to multiply the base price by the ratio in the table.

2

SYNCHRONIZATION WIRE LENGTH BY CLEAR OPENING TABLE

PL	CODE / LENGTH							
	C2	C4 ⁽¹⁾	C4 ⁽²⁾	C6	C8	T2	T3	T4
600 SE	02380	01930	00630	-	-	01080	00860	-
600 AE	02380	01930	00630	-	-	01080	00860	-
650	02480	02020	00710	-	-	01080	00960	-
700	02580	02180	00710	-	-	01180	00960	-
750	02680	02320	00710	-	-	01280	00960	-
800	02780	02480	00760	-	-	01280	01010	-
850	02880	02620	00810	-	-	01380	01080	-
900	02980	02780	00810	-	-	01380	01080	-
950	03080	02920	00860	-	-	01480	01140	-
1.000	03180	03080	00860	-	-	01480	01140	-
1.050	03280	03220	00860	-	-	01580	01180	-
1.100	03380	03380	00910	-	-	01580	01180	-
1.150	03480	03505	00910	-	-	01680	01280	-
1.200	03580	-	01080	-	-	01680	01290	-
1.300	03780	-	01180	-	-	01780	01380	-
1.400	03980	-	01180	-	-	01880	01380	-
1.500	04180	-	01280	-	-	01980	01480	-
1.600	04380	-	01280	-	-	02080	01580	-
1.700	04580	-	01380	-	-	02180	01580	-
1.800	04780	-	01380	-	-	02280	01680	-
1.900	04980	-	01480	-	-	02380	01680	-
2.000	05180	-	01480	-	-	02480	01880	-
2.100	05380	-	01580	-	-	02580	01880	-
2.200	05580	-	01580	-	-	02680	01980	-
2.300	05780	-	01680	-	-	02780	02080	-
2.400	05980	-	01680	-	-	02880	02080	-
2.500	06180	-	01780	-	-	02980	02180	-
2.600	06380	-	01780	-	-	03080	02280	-
2.700	06580	-	01880	-	-	03180	02280	-
2.800	06780	-	01880	-	-	03280	02380	-
2.900	06980	-	01980	-	-	03380	02480	-

• To determine the final price it is necessary to multiply the length x 0,0097.

(1) The dimension is for the synchronization wire between opposite sides of hanger plates.

(2) The dimension is for the synchronization wire between fast and slow hanger plates.

SE: Semiautomatic landing door.

AE: Automatic landing door.

3

SILL OPTIONS

SILL TYPE	CODE	Increase in the final price (€)
With dust holes	0A	6,30 €
Without dust holes	00	-
Heated with dust holes	HA	241,37 €
Heated without dust holes	H0	241,37 €
Cut for semiautomatic outside with dust holes	RA	75 €
Cut for semiautomatic outside without dust holes	RO	75 €
Cut for cabin frame with dust holes*	CA	75 €
Cut for cabin frame without dust holes*	CO	75 €

* Only for Telescopic doors.

14

SILL MATERIALS, FINISHES AND DIMENSION TABLE

MATERIAL	AISI	OPENING	CHANNEL	CODE	DESCRIPTION	HEATED OPTION	RATIO		
Aluminium	-	C2 - T1	8,2 mm	AL054008	54 mm. Panels 50 mm.	Available	1,00		
			15 mm	AL070015	70 mm. Panels 30 + 30 mm.		1,00		
		C4 - T2	8.2 mm	AL090008	90 mm. Panels 40 + 40 mm.		1,00		
			8 mm	AL8070008	70 mm. Panels 30 + 30 mm. Height 30mm.		1,00		
				AL2070008	70 mm. Panels 30 + 30 mm. Height 20mm.		1,00		
		T3	14,8 mm	AL090315	90 mm. Panels 25 + 25 + 25 mm.		1,00		
				AL135015	135 mm. Panels 40 + 40 + 40 mm.		1,00		
			8 mm	AL8090308	90 mm. Panels 25 + 25 + 25 mm.		1,00		
			8,2 mm	AL135008	135 mm. Panels 40 + 40 + 40 mm.		1,00		
		Reinforced aluminium	-	C2 - T1	8,2 mm		AR054008	54 mm. Panels 50 mm.	Not available
C4 - T2	AR090008			90 mm. Panels 40 + 40 mm.					
T3	14,8 mm			AR135015	135 mm. Panels 40 + 40 + 40 mm.	Available	1,50		
	8,2 mm			AR135008	135 mm. Panels 40 + 40 + 40 mm.		1,50		
Solid iron	-	C2 - T1	14,8 mm	HM054015	54 mm. Panels 50 mm.	Not available	6,80		
		C4 - T2		HM090015	90 mm. Panels 40 + 40 mm.		6,80		
		T3		HM135015	135 mm. Panels 40 + 40 + 40 mm.		6,80		
Solid stainless steel	-	C2 - T1		XM054015	54 mm. Panels 50 mm.		9,75		
		C4 - T2		XM090015	90 mm. Panels 40 + 40 mm.				
		T3		XM135015	135 mm. Panels 40 + 40 + 40 mm.				
Iron metal sheet	-	C2 - T1		15 mm	HC054015		54 mm. Panels 50 mm.	Available	4,30
		C4 - T2			HC090015		90 mm. Panels 40 + 40 mm.		4,30
		T3		HC090315	90 mm. Panels 25 + 25 + 25 mm.		Not available	4,30	
				HC135015	135 mm. Panels 40 + 40 + 40 mm.			4,30	
Stainless steel metal sheet	304	C2 - T1	14,8 mm	XC054015	54 mm. Panels 50 mm.	Available	7,07		
		C4 - T2		XC090015	90 mm. Panels 40 + 40 mm.		7,07		
		T3		XC135015	135 mm. Panels 40 + 40 + 40 mm.		7,07		

NOTE: In case of EN 81.20/50 Release II complete at the end of the code R2. (From October 2020)

To determine the final price it is necessary to multiply the base price by the ratio in the table.









Sales contacts

General: commercial@klefer.com

www.klefer.gr