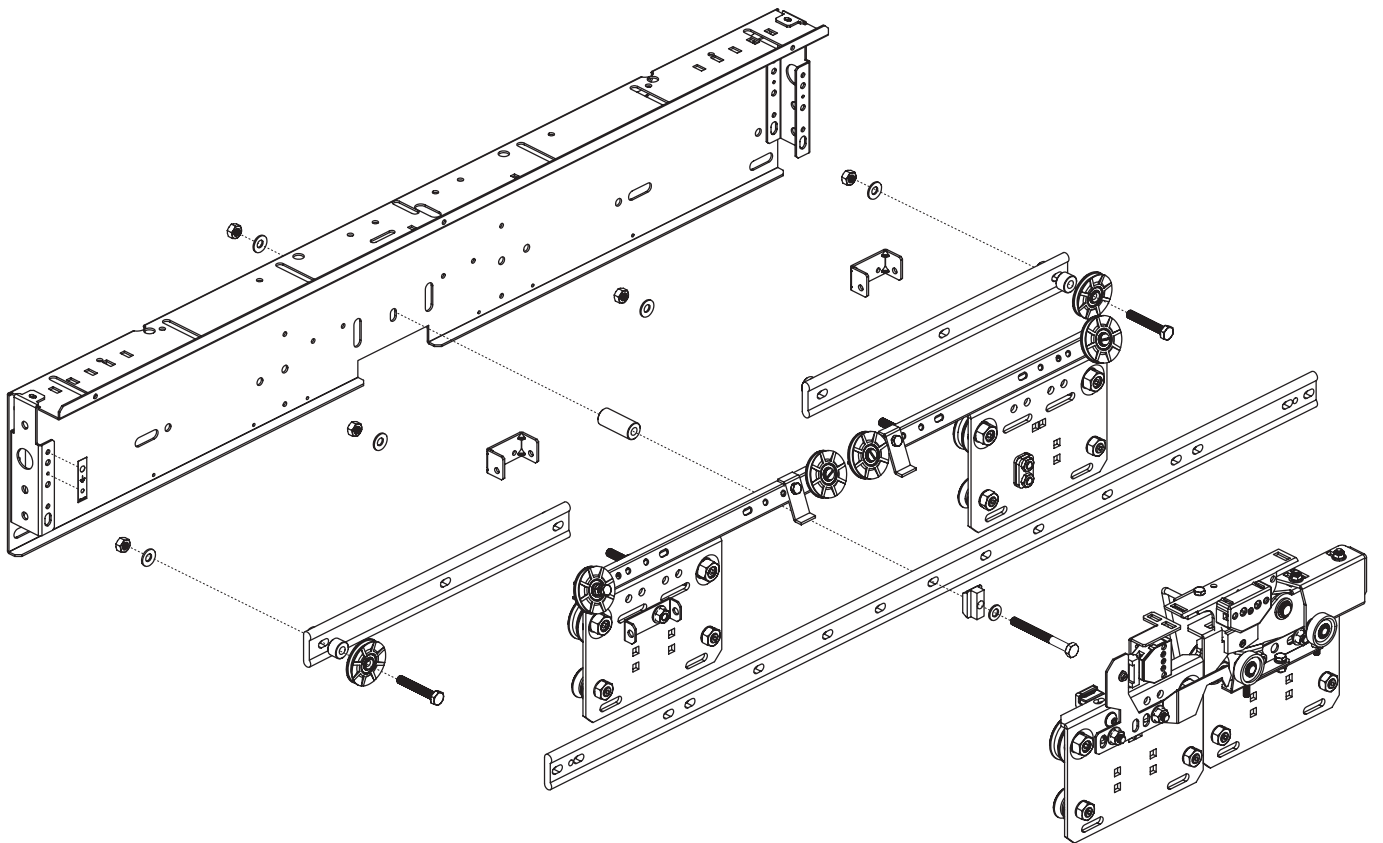


40/10 SPARE PARTS

Automatic horizontal sliding landing door



Multimedia design and production by Klefer.

Klefer, S.A.
Kilkis business park.
61100 GR
Greece
Hellenic business registry No: 14504535000.



- Spare part in stock: Available with a minimal period of delivery.



- Spare parts to be manufactured: Need to be fabricated and therefore requires a longer delivery period.

Klefer reserves the right to modify the specification and price of the products in this catalogue without prior notice.

Rate revision according version.
The rates are valid except for typographical mistakes.
The price of packaging is not included.
IVA or VAT not included.

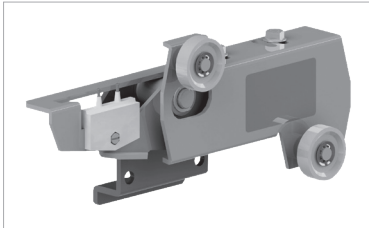
1.1

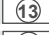
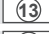
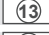

DOOR MECHANISM


Locking devices



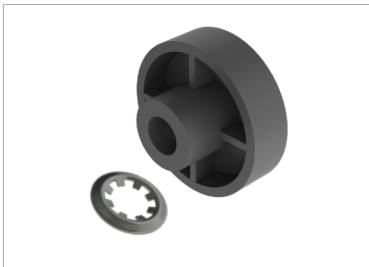
CSP Lock beak-plate support assembly




Code	Description
CSP.4000.R 	IP20 contact.
CSP.400P.R 	IP21 contact. Panoramic.
CSP.4010.R 	IP54 contact.
CSP.401P.R 	IP54 contact. Panoramic.

 To complete this code, see annex 13 (Unlocking devices table).

APT Pulling roller accessories set




Code	Description
APT.0000.R0000	Outer Ø33 mm, inner Ø8 mm.
APT.00ES.RC400	Outer Ø33 mm, inner Ø10 mm.

 In case of panoramic cover adaption please contact with Commercial sales.

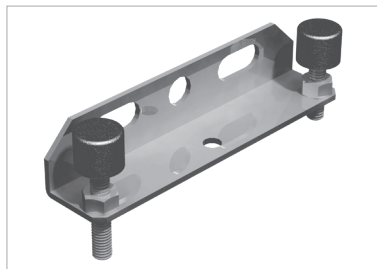
CSC Lock contact support assembly



Code	Description
CSC.4000.RD100	T1. Right opening.
CSC.4000.RI100	T1. Left opening.
CSC.4000.RD000	T2, T3. Right opening.
CSC.40IP.RD000	T2, T3. IP54. Right opening.
CSC.4000.RI000	C2, C4 < 1.200, T2, T3. Left opening.
CSC.40IP.RI000	C2, C4 < 1.200, T2, T3. IP54. Left opening.
CSC.40LH.RD100	T1. Right opening. Key in panel.
CSC.40LH.RI100	T1. Left opening. Key in panel.
CSC.40LH.RD000	T2, T3. Right opening. Key in panel.
CSC.40LH.RI000	C4 < 1.200, C2, T2, T3. Left opening. Key in panel.
CSC.40DE.RC000	Double locking device. C4 ≥ 1.200. Central opening.
CSC.40DI.RC000	Double locking device. C4 ≥ 1.200. IP54. Central opening.

 For central opening operators with double locking device, choose "telescopic right opening" or "telescopic left opening" according to the assembly hand needed.

CST Support lock beak set



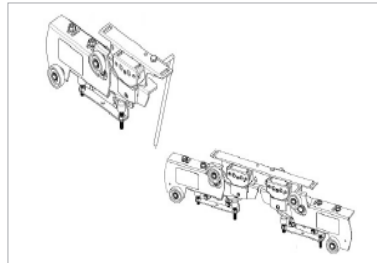
Code	Description
CST.4000.RD000	Except T1 and C2. Right opening.
CST.4000.RD100	T1 and C2. Right opening.
CST.4000.RI000	Except T1 and C2. Left opening.
CST.4000.RI100	T1 and C2. Left opening.
CST.AP00.RD000	Panoramic cover adaptation. Right opening.
CST.AP00.RI000	Panoramic cover adaptation. Left opening.
CST.4060.RC400	C4 CO: 600 .

CSA Haulage support assembly for panoramic cover adaptation



Code	Description
CSA.40AC.RC200	C2. Panoramic cover adaptation.
CSA.00AC.RC400	C4 CO < 900 mm. Panoramic cover adaptation.
CSA.40TP.RD200	T2, T3, C4 CO ≥ 950. Panoramic cover adaptation. Right opening.
CSA.40TP.RI200	T2, T3, C4 CO ≥ 950. Panoramic cover adaptation. Left opening.

KEN Lock assembly kit



Code	Description
KEN.4000.RC200	C2.
KEN.4000.RD000	T2, T3 CO ≥ 700. Right opening.
KEN.4000.RI000	T2, T3 CO ≥ 700. Left opening.
KEN.4000.RD100	T1. Right opening.
KEN.4000.RI100	T1. Left opening.
KEN.4000.RD300	T3 CO: 600-650. Right opening.
KEN.4000.RI300	T3 CO: 600-650. Left opening.
KEN.4010.RC400	C4 CO: 1000 - 1150.
KEN.4060.RC400	C4 CO: 600.
KEN.4065.RC400	C4 CO: 650 - 900.
KEN.4095.RC400	C4 CO: 950.
KEN.40DE.RC400	C4 CO ≥ 1200. (Double lock).
KEN.40IP.RC200	C2. IP54.
KEN.40IP.RD000	T2, T3 CO ≥ 700. IP54. Right opening.
KEN.40IP.RI000	T2, T3 CO ≥ 700. IP54. Left opening.
KEN.4000.RD000.100	Operation zone 100mm. T2. Right opening.
KEN.4000.RI000.100	Operation zone 100mm. T2. Left opening.

URP Lock beak regulation tool



Code	Description
URP.0000.R0000	Lock beak regulation tool.

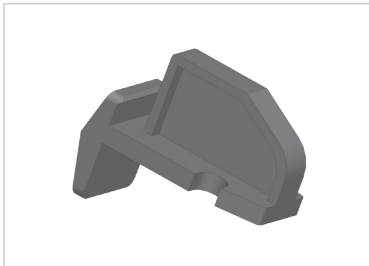
1.2

DOOR MECHANISM

Springs, synchronization, wheels and buffers

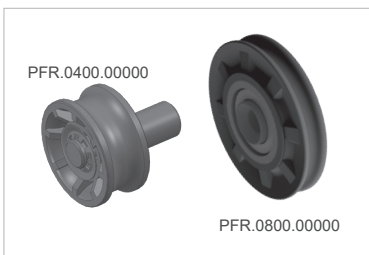


DSR Safety spring fastening support



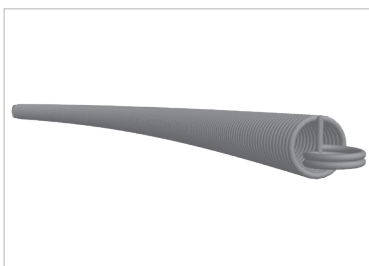
Code	Description
DSR.0000.R0000	Safety spring fastening support.

PFR Wheel




Code	Description
PFR.0400.00000	Eccentric. PFR-04. Ø 33 mm.
PFR.0800.00000	Synchronization. PFR-08. Ø 47 mm. Internal Ø 6,2 mm.
PFR.0900.00000	Synchronization. PFR-09. Ø 47 mm. Internal Ø 8,2 mm.
PFR.6200.00000	Concentric. PFR-62. Ø 48 mm.

RSR Safety spring



Code	Description
RSR.0000.TD015.00001.575FG.3540	Length: 354 mm.
RSR.0000.TD015.00001.575FG.3740	Length: 374 mm.
RSR.0000.TD015.00001.475FG.3920	Length: 392 mm.
RSR.0000.TD015.00001.575FG.4240	Length: 424 mm.
RSR.0000.TD015.00001.575FG.4250	Length: 425 mm.
RSR.0000.TD015.00001.475FG.4420	Length: 442 mm.
RSR.0000.TD015.00001.575FG.4740	Length: 474 mm.
RSR.0000.TA013.00001.250FG.5600	Length: 560 mm.
RSR.0000.TD015.00001.575FG.5740	Length: 574 mm.
RSR.0000.TA013.00001.250FG.6200	Length: 620 mm.
RSR.0000.TA013.00001.250FG.6850	Length: 685 mm.

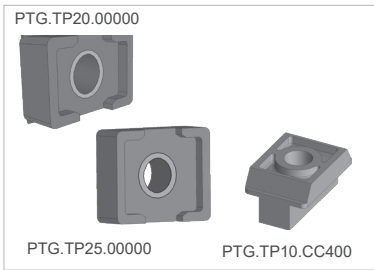
 To associate spring length with CO see annex 5 (Safety spring length table).

DST Lock beak rubber stop



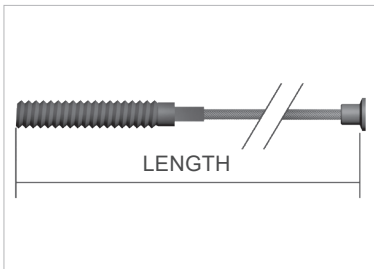
Code	Description
DST.M6TI.R0035	M6 x 35 mm.
DST.M6TI.R0025	M6 x 25 mm.


PTG Rubber stop kit



Code	Description
PTG.TP20.00000	20 x 30 mm stop.
PTG.TP25.00000	25 x 30 mm stop.
PTG.TP10.CC400	10 x 30 mm stop.

PCA Synchronization wire



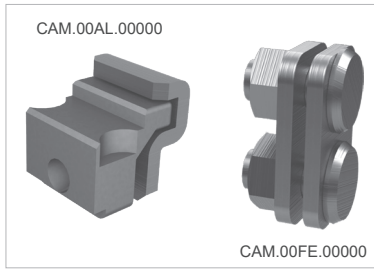
Code	Description
PCA.0000. 2	Synchronization wire.
<p> To complete this code, see annex 2 (Synchronization wire length by clear opening table). The related price is valid one linear metre.</p>	

RCA Tensor spring for synchronization wire



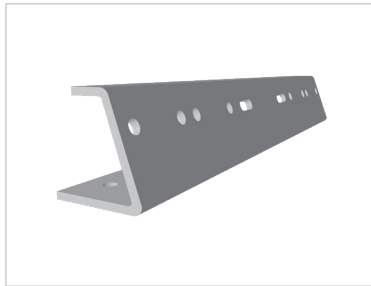
Code	Description
RCA.0000.C0015.00330.925FG.0250	Tensor spring for synchronization wire.


CAM  Cable fastener assembly




Code	Description
CAM.00AL.00000	Cable fastener assembly.
CAM.00FE.00000	Cable fastener assembly.

PBR  Wheel carrier arm



Code	Description
PBR.4000.RC4BC 	C4.
PBR.4000.RT2BC 	T2.
PBR.4000.RT3BC 	T3.

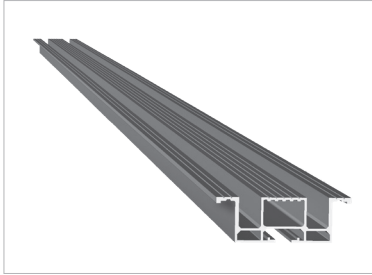
 To complete this code, see annex 1 (Clear opening table). The price shown is valid for CO 800 mm.

2


FRAME



PPS Sill



Code	Description
PPS. (14) . (3) .RC2. (1)	C2.
PPS. (14) . (3) .RC4. (1)	C4.
PPS. (14) . (3) .RR1. (1)	T1. Right opening.
PPS. (14) . (3) .RL1. (1)	T1. Left opening.
PPS. (14) . (3) .RR2. (1)	T2. Right opening.
PPS. (14) . (3) .RL2. (1)	T2. Left opening.
PPS. (14) . (3) .RR3. (1)	T3. Right opening.
PPS. (14) . (3) .RL3. (1)	T3. Left opening.
PPS. (14) . (3) .RT2. (1)	T2. CO: 700, 800, 900. EN 81-20/50.


 For sill without dust holes in telescopic doors the code is completed with T. (For either Left or Right opening, sill is the same)

To complete this code, see annex 1 (Clear opening table), annex 3 (Sill options) and annex 14 (Sill materials, finishes and dimension table). The price shown is valid for PL .800 mm

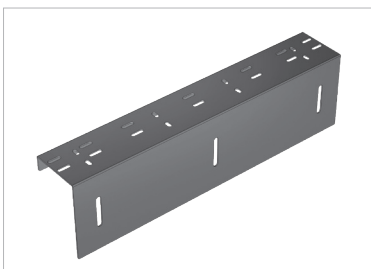
PSS Sill supplement




Code	Description
PSS.6000.R00 (7) (1)	Width 60 mm.
PSS.7000.R00 (7) (1)	Width 70 mm.

 To complete this code, see annex 1 (Clear opening table) and annex 7 (Sill finishes table). The price shown is valid for aluminium sill PL 800 mm.

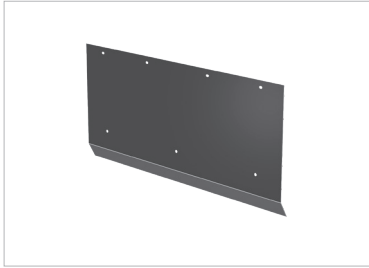
PCF Sill support console




Code	Description
PCF.C3 (8) .R00AL (1)	For AL, AR, HC, XC sill. Load ≤ 3000kg.
PCF.C3 (8) .R00HM (1)	For HM, XM sill. Load ≤ 3000kg.
PCF.C5 (8) .R00AL (1)	For AL, AR, HC, XC sill. 3001 ≤ load ≤ 5000kg.
PCF.C5 (8) .R00HM (1)	For HM, XM sill. 3001 ≤ load ≤ 5000kg.
PCF.C8 (8) .R00AL (1)	For AL, AR, HC, XC sill. 5001 ≤ load ≤ 8000kg.
PCF.C8 (8) .R00HM (1)	For HM, XM sill. 5001 ≤ load ≤ 8000kg.

 To complete this code, see annex 8 (Width) and annex 1 (Clear opening table). The price shown is valid for CO 800 mm. To determine the price, see annex 1.

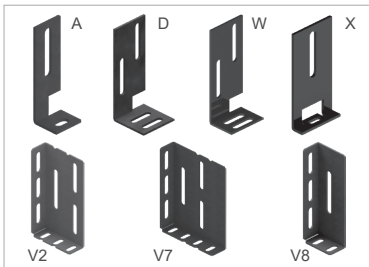
PFA  **Toe guard**



Code	Description
PFA.0000.R00FG 1	Standard model. Galvanized steel.
PFA.0000.R00 6 1	Standard model. Stainless steel finishes.

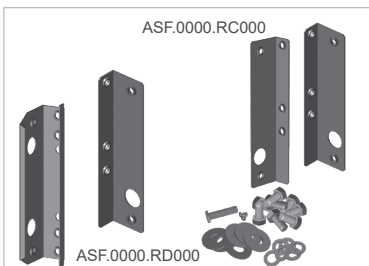
 To complete this code, see annex 1 (Clear opening table) and annex 6 (finishes table). The price shown is valid for PL 800 mm.

AES  **Fastening bracket set**



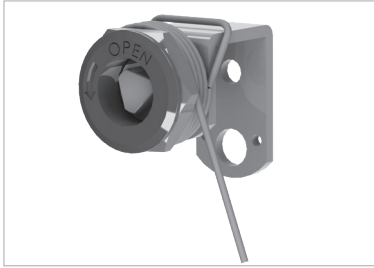
Code	Description
AES.A000.R0000	Type: "A" (1 unit).
AES.D000.R0000	Type: "D" (1 unit).
AES.E000.R0000	Type: "E" (1 unit).
AES.F000.R0000	Type: "F" (1 unit).
AES.G000.R0000	Type: "G" (1 unit).
AES.H000.R0000	Type: "H" (1 unit).
AES.K000.R0000	Type: "L" (1 unit).
AES.KE00.R0000	Type: "KE" (1 unit).
AES.KF00.R0000	Type: "K" (1 unit).
AES.M000.R0000	Type: "M" (1 unit).
AES.M700.R0000	Type: "M7" (1 unit).
AES.N001.R0000	Type: "N". CO ≤ 1000.(3 units "F" & 3 units "G" & 2 units "M").
AES.N002.R0000	Type: "N". CO > 1000.(5 units "F" & 5 units "G" & 2 units "M").
AES.O001.R0000	Type: "O". CO ≤ 1000.(3 units "F" & 3 units "H" & 2 units "M").
AES.O002.R0000	Type: "O". CO > 1000.(5 units "F" & 5 units "H" & 2 units "M").
AES.Q000.R0000	Type: "Q" (1 unit).
AES.TR00.R0000	Type: "TR". (Old). (1 unit).
AES.TRN0.R0000	Type: "TR". (New). (1 unit).
AES.V200.R0000	Type: "V2" (1 unit).
AES.V700.R0000	Type: "V7" (1 unit).
AES.V800.R0000	Type: "V8" (1 unit).
AES.W000.R0000	Type: "W" (1 unit).

ASF  **Frame fixing support set**



Code	Description
ASF.0000.RC000	Central opening.
ASF.0000.RD000	Telescopic. Right opening.
ASF.0000.RI000	Telescopic. Left opening.

ACJ Releaser lock assembly



Code	Description
ACJ.0000.RD000	C2, T1, T2, T3. Right opening.
ACJ.0000.RI000	C4, T1, T2, T3. Left opening.
ACJ.00LH.RD000	Key in right panel.
ACJ.00LH.RI000	Key in left panel.

ADS Triangular key set



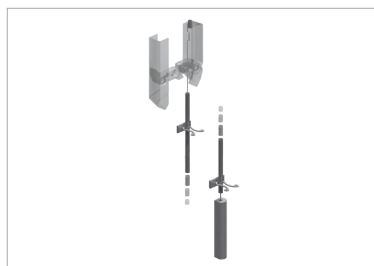
Code	Description
ADS.0011.R0000	Triangular key set (Plastic).
ADS.0071.R0000	Triangular key set (Metallic). L: 710 mm.
ADS.81MK.CT080	Triangular key set (Prudhomme). Chromed. Special hights. L: 80 mm.
ADS.81MK.CT160	Triangular key set (Prudhomme). Chromed. Special hights. L: 160 mm.
ADS.81MK.CT600	Triangular key set (Prudhomme). Chromed. Special hights. L: 600 mm.

ACP Counterweight accessories




Code	Description
ACP.4000.R0000	Counterweight accessories.

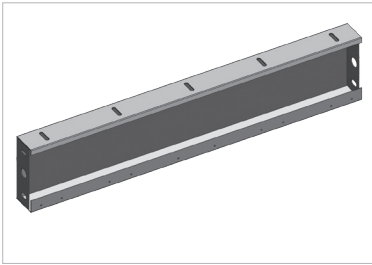
KDM Manual unlocking device



Code	Description
KDM.40.16.R.0D. KO PH	Locking device 160mm. Right opening.
KDM.40.16.R.0I. KO PH	Locking device 160mm. Left & central opening.
KDM.40.10.R.0I. KO PH	Locking device 100mm. C4 CO:600-900mm.

 To complete this code, **KO** refers to Extra Carriage, the code is 000 except Full Glass 40/10 VF. **PH** refers to Panel Height

PDI  Header



Code	Description
C2	
PDI. (M) 00.RC2 (6) (1) (17) . (15) (18)	Without indicator.
PDI. (M) CS.RC2 (6) (1) (17) . (15) (18)	With indicator.
C4	
PDI. (M) 00.RC4 (6) (1) (17) . (15) (18)	Without indicator.
PDI. (M) CS.RC4 (6) (1) (17) . (15) (18)	With indicator.
T1	
PDI. (M) 00.RR1 (6) (1) (17) . (15) (18)	Right opening. Without indicator.
PDI. (M) CS.RR1 (6) (1) (17) . (15) (18)	Right opening. With indicator.
PDI. (M) 00.RL1 (6) (1) (17) . (15) (18)	Left opening. Without indicator.
PDI. (M) CS.RL1 (6) (1) (17) . (15) (18)	Left opening. With indicator.
T2	
PDI. (M) 00.RR2 (6) (1) (17) . (15) (18)	Right opening. Without indicator.
PDI. (M) CS.RR2 (6) (1) (17) . (15) (18)	Right opening. With indicator.
PDI. (M) 00.RL2 (6) (1) (17) . (15) (18)	Left opening. Without indicator.
PDI. (M) CS.RL2 (6) (1) (17) . (15) (18)	Left opening. With indicator.
T3	
PDI. (M) 00.RR3 (6) (1) (17) . (15) (18)	Right opening. Without indicator.
PDI. (M) CS.RR3 (6) (1) (17) . (15) (18)	Right opening. With indicator.
PDI. (M) 00.RL3 (6) (1) (17) . (15) (18)	Left opening. Without indicator.
PDI. (M) CS.RL3 (6) (1) (17) . (15) (18)	Left opening. With indicator.

! To complete this code, see annex 1 (Clear opening table), annex 6 (Materials and finishes table) and annex 17 (Header dimensions table). The price shown is valid for PL 800 mm in epoxy RAL 7032 leatherette standard.

For Telescopic doors $50 \leq HD < 80$ use Right (R) or Left (L) opening.

For Telescopic doors $HD \geq 80$ use T2, T3.

For headers with indicator attach hole position drawing.

For (M) complete the code with below options:

For **T1**: All CO: 00

For **T2**: All CO: 00

For **T3**: CO<1000: 00

CO \geq 1000: 40

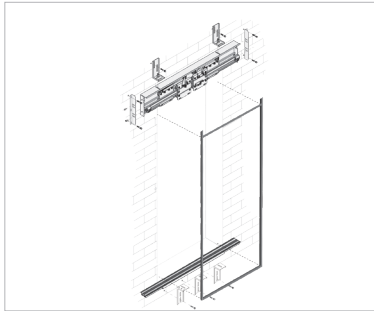
For **C2**: All CO: 40

For **C4**: CO<1000: 00

CO \geq 1000: 40

NOTE: For special model contact with commercial department.

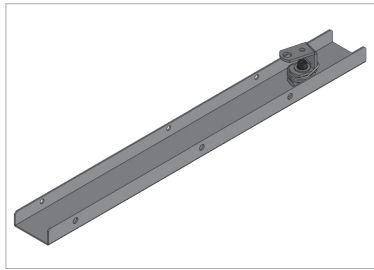
UTM Modernization installing tool



Code	Description
UTM.MD00.R0000 <input type="text" value="H"/> <input type="text" value="1"/>	Modernization installing tool.

To complete the code, see annex 1 (Clear opening table). The code should be substituted for the door clear height in mm.
 The price shown is valid for CO 800 mm and CH 2.000 mm. To calculate the price, the coefficient should be calculated according H/2.000 formula.

PTP Lightcover with release lock



Code	Description
C4	

PTP.00 <input type="text" value="9"/> .RC4 <input type="text" value="16"/> . <input type="text" value="6"/> <input type="text" value="1"/>	C4 CO < 950. Standard model.
PTP.40 <input type="text" value="9"/> .RC4 <input type="text" value="16"/> . <input type="text" value="6"/> <input type="text" value="1"/>	C4 CO ≥ 950. Standard model.
PTP.4A <input type="text" value="9"/> .RC4 <input type="text" value="16"/> . <input type="text" value="6"/> <input type="text" value="1"/>	Refurbishment model.

T2	
-----------	--

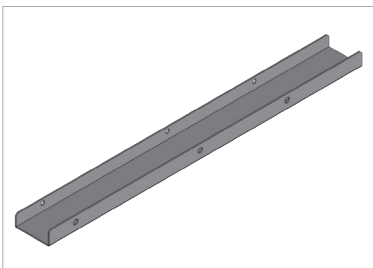
PTP.40 <input type="text" value="9"/> .RR2 <input type="text" value="16"/> . <input type="text" value="6"/> <input type="text" value="1"/>	Standard model. Right opening.
PTP.4A <input type="text" value="9"/> .RR2 <input type="text" value="16"/> . <input type="text" value="6"/> <input type="text" value="1"/>	Refurbishment model. Right opening.
PTP.40 <input type="text" value="9"/> .RL 2 <input type="text" value="16"/> . <input type="text" value="6"/> <input type="text" value="1"/>	Standard model. Left opening.
PTP.4A <input type="text" value="9"/> .RL 2 <input type="text" value="16"/> . <input type="text" value="6"/> <input type="text" value="1"/>	Refurbishment model. Left opening.

T3	
-----------	--

PTP.40 <input type="text" value="9"/> .RR3 <input type="text" value="16"/> . <input type="text" value="6"/> <input type="text" value="1"/>	Standard model. Right opening.
PTP.4A <input type="text" value="9"/> .RR3 <input type="text" value="16"/> . <input type="text" value="6"/> <input type="text" value="1"/>	Refurbishment model. Right opening.
PTP.40 <input type="text" value="9"/> .RL 3 <input type="text" value="16"/> . <input type="text" value="6"/> <input type="text" value="1"/>	Standard model. Left opening.
PTP.4A <input type="text" value="9"/> .RL 3 <input type="text" value="16"/> . <input type="text" value="6"/> <input type="text" value="1"/>	Refurbishment model. Left opening.

To complete this code, see annex 9 (Light cover contact table), see annex 16 (Intumescent strip), annex 6 (Materials and finishes table) and annex 1 (Clear opening table). The price shown is valid for PL 800 mm in epoxy RAL 7032 leatherette standard and without contact.

CTP Lightcover without release lock



Code	Description
C4	

CTP.0000.RC4 <input type="text" value="16"/> . <input type="text" value="6"/> <input type="text" value="1"/>	Standard model.
CTP.00AR.RC4 <input type="text" value="16"/> . <input type="text" value="6"/> <input type="text" value="1"/>	Refurbishment model.

T2	
-----------	--

CTP.0000.RR2 <input type="text" value="16"/> . <input type="text" value="6"/> <input type="text" value="1"/>	Standard model. Right opening.
CTP.00AR.RR2 <input type="text" value="16"/> . <input type="text" value="6"/> <input type="text" value="1"/>	Refurbishment model. Right opening.
CTP.0000.RL2 <input type="text" value="16"/> . <input type="text" value="6"/> <input type="text" value="1"/>	Standard model. Left opening.
CTP.00AR.RL2 <input type="text" value="16"/> . <input type="text" value="6"/> <input type="text" value="1"/>	Refurbishment model. Left opening.

T3	
-----------	--

CTP.0000.RR3 <input type="text" value="16"/> . <input type="text" value="6"/> <input type="text" value="1"/>	Standard model. Right opening.
CTP.00AR.RR3 <input type="text" value="16"/> . <input type="text" value="6"/> <input type="text" value="1"/>	Refurbishment model. Right opening.
CTP.0000.RL3 <input type="text" value="16"/> . <input type="text" value="6"/> <input type="text" value="1"/>	Standard model. Left opening.
CTP.00AR.RL3 <input type="text" value="16"/> . <input type="text" value="6"/> <input type="text" value="1"/>	Refurbishment model. Left opening.

To complete this code, see annex 16 (Intumescent strip), annex 6 (Materials and finishes table) and annex 1 (Clear opening table). The price shown is valid for PL 800 mm in epoxy RAL 7032 leatherette standard.

3

PANELS

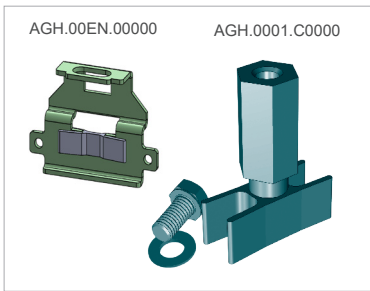


ASH Panel regulator support



Code	Description
ASH.0001.C0000	60 mm. (2 units).
ASH.0003.C0000	40 mm. (2 units).

AGH Panel guide shoe assembly



Code	Description
AGH.0001.C0000	16 mm groove (2 units).
AGH.00EN.00000	8 mm groove. EN 81.20/50 (2 units).
AGH.AJP0.00000	8 mm groove.Type plus (Release II). EN 81.20/50 (2 units).

GFH Glass



Code	Description
GFH.GMB0.00000 <input type="text" value="Dimension X1"/> <input type="text" value="Dimension Y1"/>	Laminated glass. Beveled big vision 5+5.
GFH.GME2.00000 <input type="text" value="Dimension X2"/> <input type="text" value="Dimension Y1"/>	Laminated glass. Flush big vision 6 + 6.

! Code Dimension X1: PL / number of panels - 40 mm. Code Dimension Y1: HL - 200 mm.
 Code Dimension X2: PL / number of panels - 47 mm. Code Dimension Y1: HL - 200 mm.
Note: In case of obtaining a value of three figures, precede by 0 to complete the code.
 The price shown is valid for glass measurements T2, PL 800 mm and HL 2.000 mm, with a ratio of X and Y = 1

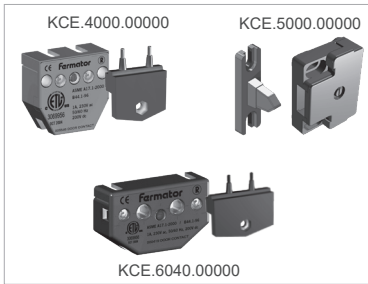
4

ELECTRONIC COMPONENTS



KCE

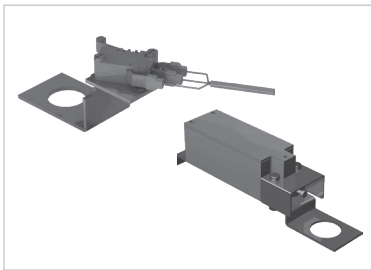
Electrical contact kit



Code	Description
KCE.4000.00000	40 mm.
KCE.5000.00000	50 mm.
KCE.6040.00000	60 mm.
KCE.IP54.00000	IP54 contact.

CCE

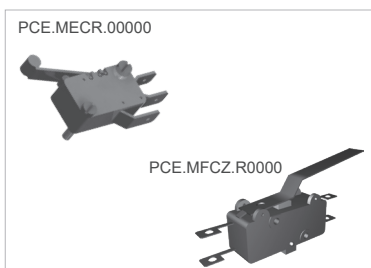
Electrical contact with support assembly



Code	Description
CCE.BE00.R0000	Bistable switch electromagnetic assembly (Berstein).
CCE.BEM0.R0000	Bistable switch mechanic assembly (Berstein).
CCE.MF00.RC400	Bistable mechanical Crouzet. C4.
CCE.MF40.RD000	Bistable mechanical Crouzet. T2-T3. Right opening.
CCE.MF40.RI000	Bistable mechanical Crouzet. T2-T3. Left opening.
CCE.MF40.RC200	Bistable mechanical Crouzet. C2. Model 40/10.
CCE.PR00.RD000	Prudhomme electrical contact. C2. Telescopic right opening.
CCE.PR00.RI000	Prudhomme electrical contact. C4. Telescopic left opening.

PCE

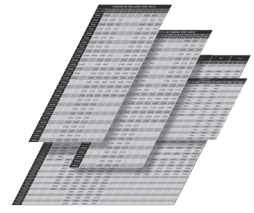
Electrical contact



Code	Description
PCE.MECR.00000	Monostable microswitch.
PCE.MFCZ.R0000	Manual reset bistable contact.

5

ANNEXES



1

CLEAR OPENING TABLE (CO)

CO	CODE	RATIO	CO	CODE	RATIO
500	0500	1,00	2.250	2250	2,81
550	0550	1,00	2.300	2300	2,88
600	0600	1,00	2.350	2350	2,94
650	0650	1,00	2.400	2400	3,00
700	0700	1,00	2.450	2450	3,06
750	0750	1,00	2.500	2500	3,13
800	0800	1,00	2.550	2550	3,19
850	0850	1,06	2.600	2600	3,25
900	0900	1,13	2.650	2650	3,31
915	0915	1,14	2.700	2700	3,38
950	0950	1,19	2.750	2750	3,44
1.000	1000	1,25	2.800	2800	3,50
1.050	1050	1,31	2.850	2850	3,56
1.100	1100	1,38	2.900	2900	3,63
1.150	1150	1,44	2.950	2950	3,69
1.200	1200	1,50	3.000	3000	3,75
1.250	1250	1,56	3.050	3050	3,81
1.300	1300	1,63	3.100	3100	3,88
1.350	1350	1,69	3.150	3150	3,94
1.400	1400	1,75	3.200	3200	4,00
1.450	1450	1,81	3.250	3250	4,06
1.500	1500	1,88	3.300	3300	4,13
1.550	1550	1,94	3.350	3350	4,19
1.600	1600	2,00	3.400	3400	4,25
1.650	1650	2,06	3.450	3450	4,31
1.700	1700	2,13	3.500	3500	4,38
1.750	1750	2,19	3.550	3550	4,44
1.800	1800	2,25	3.600	3600	4,50
1.850	1850	2,31	3.650	3650	4,56
1.900	1900	2,38	3.700	3700	4,63
1.950	1950	2,44	3.750	3750	4,69
2.000	2000	2,50	3.800	3800	4,75
2.050	2050	2,56	3.850	3850	4,81
2.100	2100	2,63	3.900	3900	4,88
2.150	2150	2,69	3.950	3950	4,94
2.200	2200	2,75	4.000	4000	5,00

To determine the final price it is necessary to multiply the base price by the ratio in the table.

2

SYNCHRONIZATION WIRE LENGTH BY CLEAR OPENING TABLE

CO	CODE / LENGTH							
	C2	C4 ⁽¹⁾	C4 ⁽²⁾	C6	C8	T2	T3	T4
600	02380	01980	00660	-	-	01080	00760	-
650	02580	02080	00710	-	-	01180	00860	-
700	02780	02280	00710	-	-	01180	00960	-
750	02980	02380	00760	-	-	01280	01010	-
800	03180	02580	00760	-	-	01280	01010	-
850	03380	02680	00810	-	-	01380	01080	-
900	03580	02880	00810	-	-	01380	01080	-
950	03780	02980	00960	-	-	01480	01180	-
1.000	03980	03180	00960	-	-	01480	01180	-
1.100	04380	03480	01010	-	-	01580	01280	-
1.200	04780	-	01080	-	-	01680	01280	-
1.300	05180	-	01180	-	-	01780	01380	-
1.400	05580	-	01180	-	-	01880	01480	-
1.500	05980	-	01280	-	-	01980	01480	-
1.600	06380	-	01280	-	-	02080	01580	-
1.700	06780	-	01380	-	-	02180	01580	-
1.800	07180	-	01380	-	-	02280	01680	-
1.900	07580	-	01480	-	-	02380	01680	-
2.000	07980	-	01480	-	-	02480	01880	-
2.100	-	-	01580	-	-	02580	01880	-
2.200	-	-	01580	-	-	02680	01980	-
2.300	-	-	01680	-	-	02780	02080	-
2.400	-	-	01680	-	-	02880	02080	-
2.500	-	-	01780	-	-	02980	02180	-
2.600	-	-	01780	-	-	3080	02280	-
2.700	-	-	01880	-	-	3180	02280	-
2.800	-	-	01880	-	-	3280	02380	-
2.900	-	-	01980	-	-	3380	02480	-
3.000	-	-	01980	-	-	3480	02480	-

- To determine the final price it is necessary to multiply the length x 0,0097.
- (1) The dimension is for the synchronization wire between opposite sides of hanger plates.
- (2) The dimension is for the synchronization wire between fast and slow hanger plates.

3

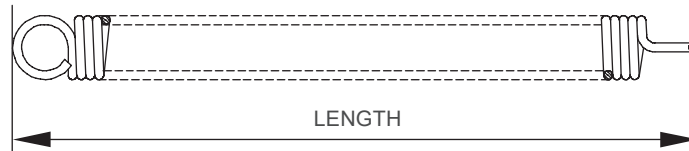
SILL OPTIONS

SILL TYPE	CODE	Increase in the final price (€)
With dust holes	0A	6,30 €
Without dust holes	00	-
Heated with dust holes	HA	241,37 €
Heated without dust holes	H0	241,37 €

5

SAFETY SPRING LENGTH TABLE

CO	C2	C4	C6	C8	T2	T3	T4
600	0425	0392	-	-	0354	0354	-
650	0425	0392	-	-	0354	0354	-
700	0425	0392	-	-	0354	0354	-
750	0425	0392	-	-	0354	0354	-
800	0425	0442	-	-	0354	0442	-
850	0425	0442	-	-	0374	0442	-
900	0560	0442	-	-	0374	0442	-
950	0560	0442	-	-	0374	0442	-
1.000	0560	0442	-	-	0374	0442	-
1.050	0560	0442	-	-	0374	0442	-
1.100	0620	0442	-	-	0424	0442	-
1.150	0620	0442	-	-	0424	0442	-
1.200	0620	0374	-	-	0424	0442	-
1.250	0620	0374	-	-	-	0442	-
1.300	0620	0374	-	-	-	0442	-
1.350	0620	0374	-	-	-	0442	-
1.400	0620	0374	-	-	-	0442	-



6a

EPOXY FINISHES TABLE

MATERIAL	FINISH		CODE	RATIO	
Epoxy	Leatherette standard	RAL 7032	IM	1	
		RAL 9016		75,00€ ¹	
	Leatherette Other	RAL 1013		75,00€ ¹	
		RAL 9001		75,00€ ¹	
		RAL 7001		75,00€ ¹	
		RAL 7010		75,00€ ¹	
		RAL 1001		75,00€ ¹	
		RAL 7005		75,00€ ¹	
		RAL 7012		75,00€ ¹	
		RAL 7030		75,00€ ¹	
		RAL 7035		75,00€ ¹	
		RAL 8017		75,00€ ¹	
		RAL 7040		75,00€ ¹	
		Sparkle		PP300	☎
		Textured		Grey	☎
	Grey Metallic			☎	

It follows on page 18 →

6b

STAINLESS STEEL FINISHES TABLE

MATERIAL		CODE	RATIO
Stainless steel	AISI 304	XN	2,10
	AISI 441	MX	1,40
	AISI 304 Mirror	B2	2,45
	AISI 441 Mirror	MB	1,40
	Special finishes	AE	☎

¹ Increase in the final price.

To determine the final price it is necessary to multiply the base price by the ratio in the table.

7

SILL FINISHES TABLE

	FINISH	CODE	RATIO
S	Aluminium (16 mm track)	AL	1,00
	Reinforced aluminium	AR	1,50
	Sheet metal steel	HC	4,30
	Solid steel	HM	6,80
	Sheet metal stainless steel	XC	5,90
	Solid stainless steel	XM	9,75

To determine the final price it is necessary to multiply the base price by the ratio in the table.

Only finishes marked with a **S** are valid for sill between frames

8

SILL SUPPORT CONSOLE WIDTH TABLE

WIDTH	CODE	(€)
55 - 75 mm	55-75	40,04
80 - 125 mm	80-125	42,07
130 - 170 mm	130-170	73,72
175 - 180 mm	175-180	75,90

9

LIGHT COVER CONTACT TABLE

MODEL	CODE	RATIO
Without contact	00	1,00
Monoestable EN 81-21	M2	3,00
Biestable EN 81-21 manual reset	MF	4,00
Biestable EN 81-21 electrical reset	BS	7,00
EN 81-71	PR	10

To determine the final price it is necessary to multiply the base price by the ratio in the table.

13

SINGLE LOCKING DEVICE DOORS TABLE

PL	C2	C4	C6	T1		T2		T3		T4							
	Code	Code	Code	Code		Code		Code		Code							
				Right hand	Left hand	Right hand	Left hand	Right hand	Left hand	Right hand	Left hand						
600	C200	C41B	[Greyed out]	D100	I100	D000	I000	D00A*	I00A*	[Greyed out]	[Greyed out]						
650																	
700																	
750																	
800																	
850																	
900																	
950																	
1.000		C40A															
1.050		C400*						[Greyed out]	[Greyed out]			[Greyed out]	[Greyed out]	[Greyed out]	[Greyed out]	D000	I000
1.100																	
1.150																	
1.200																	
1.250																	
1.300		[Greyed out]						[Greyed out]	[Greyed out]			[Greyed out]	[Greyed out]	[Greyed out]	[Greyed out]	[Greyed out]	[Greyed out]
1.350		[Greyed out]						[Greyed out]	[Greyed out]			[Greyed out]	[Greyed out]	[Greyed out]	[Greyed out]	[Greyed out]	[Greyed out]
1.400	[Greyed out]	[Greyed out]	[Greyed out]	[Greyed out]	[Greyed out]	[Greyed out]	[Greyed out]	[Greyed out]	[Greyed out]	[Greyed out]							

For codes with * the total price is 126,00 €

13

DOUBLE LOCKING DEVICE DOORS TABLE

PL	Code					
	C4		C6		C8	
	Right hand	Left hand	Right hand	Left hand	Right hand	Left hand
1.200	CDD0	CID0	[Greyed out]	[Greyed out]	[Greyed out]	[Greyed out]
1.250						
1.300						
1.350						
1.400						

14

SILL MATERIALS, FINISHES AND DIMENSION TABLE

MATERIAL	AISI	OPENING	CHANNEL	CODE	DESCRIPTION	HEATED OPTION	RATIO		
Aluminium	-	C2 - T1	8,2mm	AL054008	54mm. Panels 50 mm.	Available	1,00		
		C4 - T2	15mm	AL070015	70 mm. Panels 30 + 30 mm.		1,00		
			8,2mm	AL090008	90 mm. Panels 40 + 40 mm.		1,00		
			8mm	AL8070008	70 mm. Panels 30 + 30 mm. Height 30mm.		1,00		
				AL2070008	70 mm. Panels 30 + 30 mm. Height 20mm.		1,00		
		T3	14,8mm	AL135015	135 mm. Panels 40 + 40 + 40 mm.		1,00		
			8,2mm	AL135008	135 mm. Panels 40 + 40 + 40 mm.		1,00		
		Reinforced aluminium	-	C2 - T1	8,2mm		AR054008	54mm. Panels 50 mm.	Not available
C4 - T2	AR090008			90 mm. Panels 40 + 40 mm.		1,50			
T3	14,8mm			AR135015	135 mm. Panels 40 + 40 + 40 mm.	Available	1,50		
	8,2mm			AR135008	135 mm. Panels 40 + 40 + 40 mm.		1,50		
Solid iron	-	C2 - T1	14,8mm	HM054015	54mm. Panels 50 mm.	Not available	6,80		
		C4 - T2		HM090015	90 mm. Panels 40 + 40 mm.		6,80		
		T3		HM135015	135 mm. Panels 40 + 40 + 40 mm.		6,80		
Solid stainless steel	-	C2 - T1		XM054015	54mm. Panels 50 mm.		Not available	9,75	
		C4 - T2		XM090015	90 mm. Panels 40 + 40 mm.			9,75	
		T3		XM135015	135 mm. Panels 40 + 40 + 40 mm.			9,75	
Iron metal sheet	-	C2 - T1		14,8mm	HC054015		54mm. Panels 50 mm.	Available	4,30
		C4 - T2			HC090015		90 mm. Panels 40 + 40 mm.		4,30
		T3			HC135015		135 mm. Panels 40 + 40 + 40 mm.		4,30
Stainless steel metal sheet	304	C2 - T1	XC054015		54mm. Panels 50 mm.	Available	7,07		
		C4 - T2	XC090015		90 mm. Panels 40 + 40 mm.		7,07		
		T3	XC135015		135 mm. Panels 40 + 40 + 40 mm.		7,07		

NOTE: In case of EN 81.20/50 Release II complete at the end of the code R2. (From October 2020)

.To determine the final price it is necessary to multiply the base price by the ratio in the table

15

IP54

OPTION	CODE
Without IP54	00
With IP54	IP

16

INTUMESCENT STRIP

OPTION	CODE	RATIO
Without Intumescent strip	00	1,00
With Intumescent strip	EI	+13 €

17

HEADER DIMENSIONS TABLE

FRAME DEPTH	HEADER HIGH	CODE	RATIO
20	210	0210.020	1,15
25	210	0210.025	1,15
60	50	0050.060	1,15
	80	0080.060	1,15
	100	0100.060	1,15
	210	0210.060	1
	265	0265.060	1,15
70	50	0050.070	1,15
	120	0120.070	1,15
	210	0210.070	1
	265	0265.070	1,15
155	210	0210.155	1

18

JAMB CABINET TABLE

OPTION	CODE
Door without jamb cabinet	00
Door with jamb cabinet	WI / WD / WF





Sales contacts

General: commercial@klefer.com

www.klefer.gr