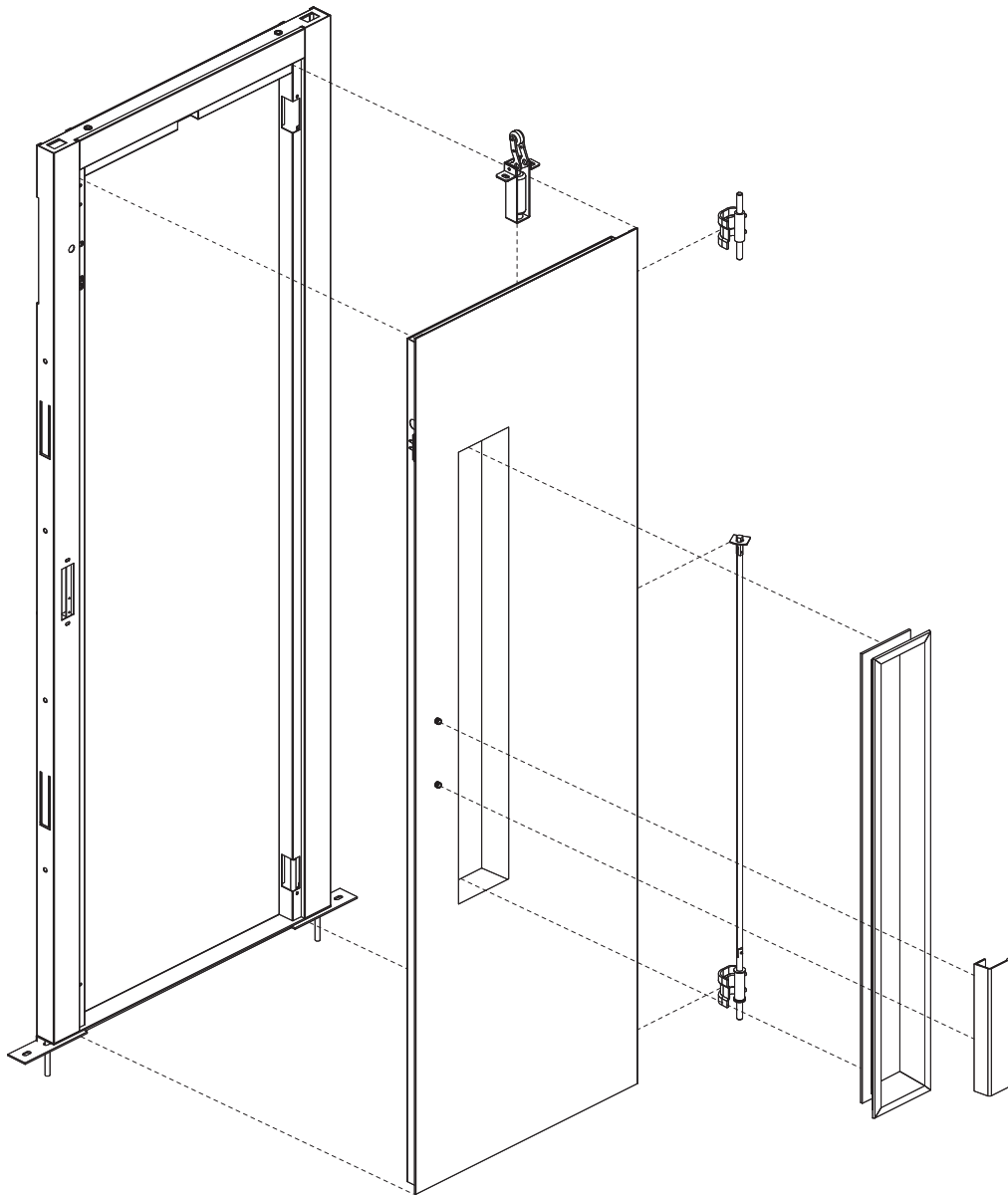


SEMIAUTOMATIC SPARE PARTS

Semiautomatic hinged landing door



Multimedia design and production by Klefer.

Klefer, S.A.
Kilkis business park.
61100 GR.
Greece
Hellenic Business Registry No: 14504535000.



- Spare part in stock: Available with a minimal period of delivery.



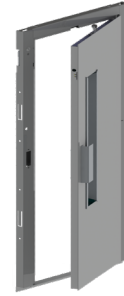
- Spare parts to be manufactured: Need to be fabricated and therefore requires a longer delivery period.

Klefer reserves the right to modify the specification and price of the products in this catalogue without prior notice.

Rate revision according version.
The rates are valid except for typographical mistakes.
The price of packaging is not included.
IVA or VAT not included.

1

LANDING



CRJ | Locking device




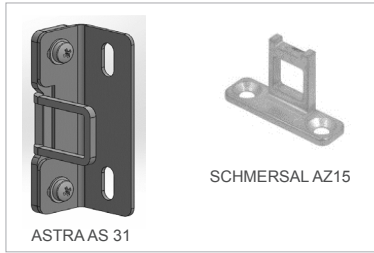
Code	Description
CRJ.121423	Kronenberg Right DLF1MO-R-X15(u).5.90/01.P. (For Left door).
CRJ.121422	Kronenberg Left DLF1MO-L-X15(u).5.90/01.P. (For Right door).
CRJ.140460	Kronenberg Left DL1MO-L-X15(u).5.90/01.P. (For Right door)
CRJ.140465	Kronenberg Right DL1MO-R-X15(u).5.90/01.P. (For Left door)
CRJ.120034	Kronenberg Right DLF1-R-X15(u).20.9/11. (For Right door)
CRJ.58899	Kronenberg Left DLF1-L-X15(u).20.9/11. (For Left door)
CRJ.140463	Kronenberg Left DL1MO-L-X20(ANS0).5.90/01.P. (For Right door)
CRJ.140467	Kronenberg Right DL1MO-R-X20(ANS0).5.90/01.P. (For Left door)
CRJ.115710	Kronenberg Left DLF2-L-X25(u).10.6.9/11. (For Right door)
CRJ.154257	Kronenberg Right DLF2-R-X25(u)10.6.9/11. (For Left door)
CRJ.134216	Kronenberg Right DLF2-R-W-X15(u).10.9/11. (For Left door).(IP54)
CRJ.98350	Kronenberg Left DLF2-L-W-X15(u).10.9/11. (For Right door).(IP54)
CRJ.119662	Schmersal Right AV 20 RH 105 E4 X20U. (For Right door).(IP54)
CRJ.119663	Schmersal Left AV 20 LH 105 E4 X20U. (For Left door).(IP54)
CRJ.61780	Zantiotis (EO1 A/B)
CRJ.100928	Matthaiou (T1)
CRJ.130209	Matthaiou (T1). Roller Ø28
CRJ.72269	Zantiotis (EO1 A/B). (2 locks).(For 2 panel door)
CRJ.97033	Zantiotis (EO1 A/B). (1 lock).(For 2 panel door)

CRJ | Door contact



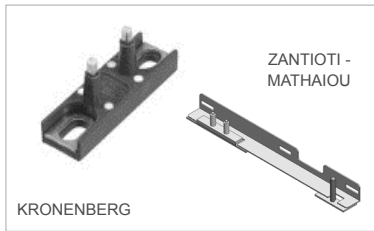
Code	Description
CRJ.76983	Kronenberg HZTK-1.
CRJ.97258	Kronenberg HZS.
CRJ.90603	Kronenberg WZA 11.
CRJ.65299	Schmersal IP54 AZ 15 ZO-2036-3.
CRJ.148709	ASTRAAS 31.

CRJ  **Actuator**



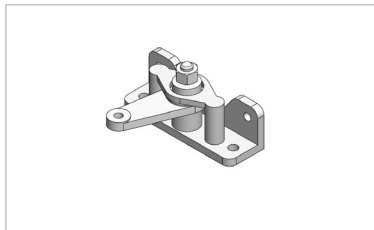
Code	Description
CRJ.148710	ASTRAAS 31 (1panel door).
CRJ.149518	ASTRAAS 31 (2panel door).
CRJ.89531	SCHMERSAL AZ15.

CRJ  **Contact bridge**



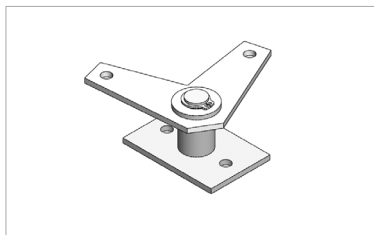
Code	Description
CRJ.76986	Kronenberg PZ 18.
CRJ.93591	Kronenberg PZ 21.
CRJ.MATHAIYOU.AN	Mathaiou (TI).
ZANTETH1B	Zantioti (EO1 A/B).

CRJ  **Single bearing block**



Code	Description
CRJ.90605	Kronenberg E.
CRJ.82465	Zantioti.

CRJ  **Pull rod deflection**



Code	Description
CRJ.129137	Kronenberg E-ZU.
CRJ.75100	KLEFER V1.

CRJ  **Roller lever**



Code	Description
CRJ.82466	Zantioti (2panel door).
CRJ.104356	RH Kronenberg.

CRJ  **Cover bridge**



Code	Description
CRJ.142276	Zantioti / Mathaiou.

CRJ  **Latch plate**



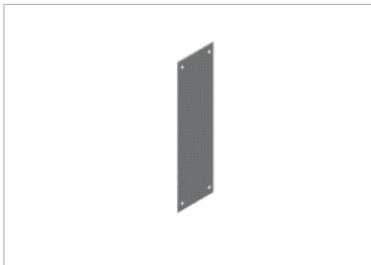
Code	Description
CRJ.82256	Kronenberg (B).

CRJ  **Safety lock**



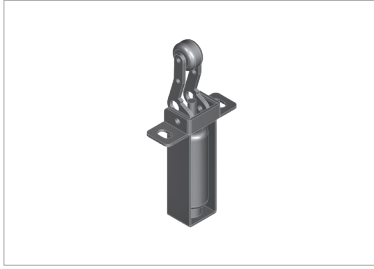
Code	Description
CRJ.71531	AGB B 856.45.03.

PTA  **Push plate**



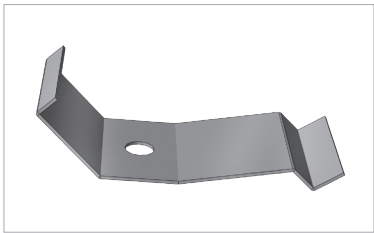
Code	Description
PTA.00P6.S00AL	CO ≤ 650.
PTA.00PE.S00AL	CO ≥ 700.

PAT Shock absorber



Code	Description
PAT.GL00.S0000	Shock absorber.

AMI Vision clamp set



Code	Description
AMI.GL00.S0000	KLEFER model (8 units).

PTA Handle



Code	Description
PTA.67998	Elegance model.
PTA.69061	NIKEL-MAT Chromium No 231.
PTA.69067	NIKEL-MAT No 346.
PTA.71114	BAR LUX Inox satin (Z1), L:450mm.
PTA.75688	BAR LUX Inox satin (Z3), L:800mm.
PTA.79054	BAR LUX Inox gold satin (Z1), L:450mm.
PTA.93138	BAR LUX Inox satin (Z2), L:500mm.

ADS Triangular key set



Code	Description
ADS.0011.R0000	Triangular key (Plastic).

SMT Thrust bearing



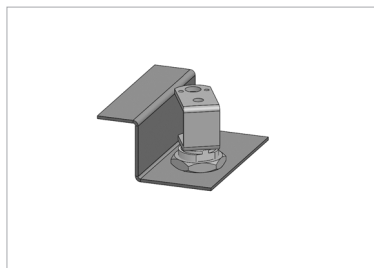
Code	Description
SMT.74037	Bearing 1600/12. External Ø20 / Internal Ø12 (1panel door).

SMT Hinge Spacer



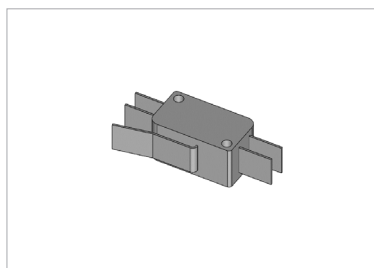
Code	Description
SMT.74319	Hinge spacer 2mm (1panel door)(2 pcs).

PCE Electrical contact with support assembly



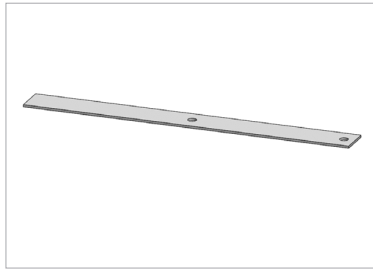
Code	Description
PCE.MFCZ.R0000.SETL.075	Low pit Bi-stable contact. Left door. Jamb width<100.
PCE.MFCZ.R0000.SETR.075	Low pit Bi-stable contact. Right door. Jamb width<100.
PCE.MFCZ.R0000.SETL.100	Low pit Bi-stable contact. Left door. Jamb width≥100.
PCE.MFCZ.R0000.SETR.100	Low pit Bi-stable contact. Right door. Jamb width≥100.
SMT.MAISON.SETL.AX	Low pit monostable contact. Left door.
SMT.MAISON.SETR.AX	Low pit monostable contact. Right door.

PCE Electrical contact



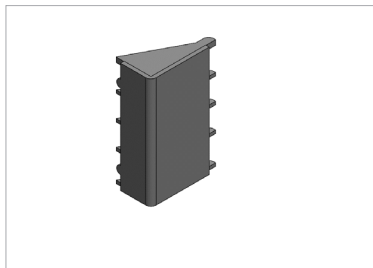
Code	Description
PCE.MFCZ.R0000	Bi-stable contact.

SMA Fixation bracket



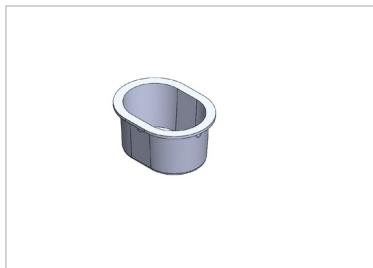
Code	Description
SMA.107067	Brackets. (1 panel door).(12 units).

SMA Hinge cover



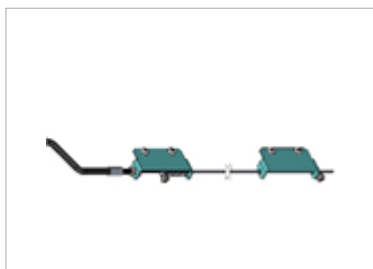
Code	Description
SMA.58364	Hinge cover.(1panel door).

SMA Hole cover



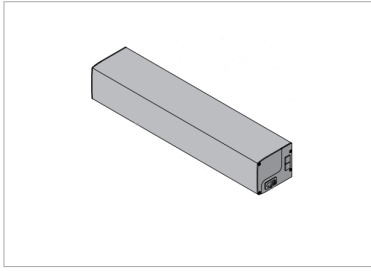
Code	Description
SMA.78698	Latch bolt hole cover (1panel door).

KDM Manual unlocking device



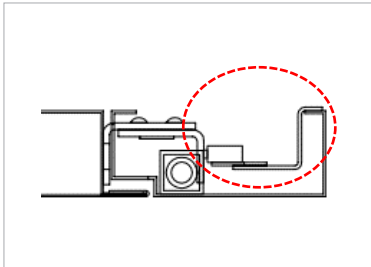
Code	Description
KDM.SE.02.S.0D	Right opening.
KDM.SE.02.S.0I	Right opening.

SMA Automatic mechanism



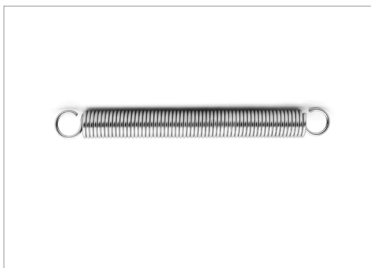
Code	Description
SMA.AUTMEC	Automatic mechanism semiautomatic door.
SMA.AUTMEC.CONTROL	Control automatic mechanism semiautomatic door.
SMA.AUTMEC.RADAR	Motion detector automatic mechanism semiautomatic door.

SMA Hidden contact



Code	Description
SMA.FRAME.EXTRACONTACT	Hidden contact set. Jamb: 100-125 (1panel door).

SMT Spring

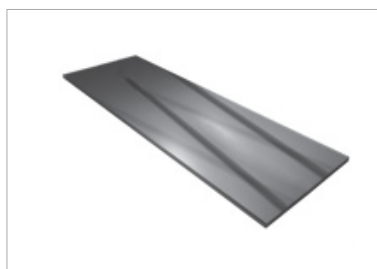


Code	Description
SMT.72270	Door panel return spring.

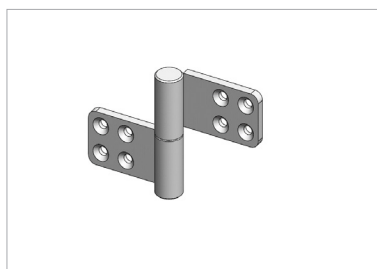
PMT Vision frame



Code	Description
PMT.GL00.S0000	Model Klefer.
PMT.BV <input type="text" value="6"/> .S0000. <input type="text" value="CO"/> <input type="text" value="CH"/>	Model Big Vision.

GMI  **Vision Glass**


Code	Description
GFH.GM00.00000. CO CH	Model Big Vision (with frame).
GMI.GL00.S0000	Model Klefer.
GMI.SK00.S0000	Model Skotia.
GMI.NWSK.S0000	Model New Skotia.

CFB  **Hinge**


Code	Description
CFB.73473.L	Ø30. Metallized. (Left door).
CFB.73473.R	Ø30. Metallized. (Right door).
CFB.89380.L	Ø30. Epoxy. (Left door).
CFB.89380.R	Ø30. Epoxy. (Right door).
CFB.77825.L	Ø20. Metallized. (Left door).
CFB.77825.R	Ø20. Metallized. (Right door).
CFB.143377.L	Ø20. Epoxy. (Left door).
CFB.143377.R	Ø20. Epoxy. (Right door).

ANNEXES

6a

EPOXY FINISHES TABLE

MATERIAL	FINISH		CODE	RATIO	
Epoxy	Leatherette standard	RAL 7032	IM	1	
		RAL 9016		75,00€ ¹	
	Leatherette Other	RAL 1013		75,00€ ¹	
		RAL 9001		75,00€ ¹	
		RAL 7001		75,00€ ¹	
		RAL 7010		75,00€ ¹	
		RAL 1001		75,00€ ¹	
		RAL 7005		75,00€ ¹	
		RAL 7012		75,00€ ¹	
		RAL 7030		75,00€ ¹	
		RAL 7035		75,00€ ¹	
		RAL 8017		75,00€ ¹	
		RAL 7040		75,00€ ¹	
		Sparkle		PP300	☎
		Textured		Grey	☎
Grey Metallic	☎				

¹ Increase in the final price.

6b

STAINLESS STEEL FINISHES TABLE

MATERIAL		CODE	RATIO
Stainless steel	AISI 304	XN	2,10
	AISI 441	MX	1,40
	AISI 304 Mirror	B2	2,45
	AISI 441 Mirror	MB	1,40
	Special finishes	AE	☎

.Increase in the final price¹

.To determine the final price it is necessary to multiply the base price by the ratio in the table

Enquiry: Order:

Order N^{er}: Date: / / Delivery date: / /

Customer:

Delivery address:

SPARE PARTS ORDER

QUANTITY	<input style="width: 95%;" type="text"/>	NOTES
----------	--	-------

QUANTITY	<input style="width: 95%;" type="text"/>	NOTES
----------	--	-------

QUANTITY	<input style="width: 95%;" type="text"/>	NOTES
----------	--	-------

QUANTITY	<input style="width: 95%;" type="text"/>	NOTES
----------	--	-------

QUANTITY	<input style="width: 95%;" type="text"/>	NOTES
----------	--	-------

QUANTITY	<input style="width: 95%;" type="text"/>	NOTES
----------	--	-------

QUANTITY	<input style="width: 95%;" type="text"/>	NOTES
----------	--	-------

QUANTITY	<input style="width: 95%;" type="text"/>	NOTES
----------	--	-------

QUANTITY	<input style="width: 95%;" type="text"/>	NOTES
----------	--	-------

QUANTITY	<input style="width: 95%;" type="text"/>	NOTES
----------	--	-------

QUANTITY	<input style="width: 95%;" type="text"/>	NOTES
----------	--	-------

QUANTITY	<input style="width: 95%;" type="text"/>	NOTES
----------	--	-------

QUANTITY	<input style="width: 95%;" type="text"/>	NOTES
----------	--	-------

QUANTITY	<input style="width: 95%;" type="text"/>	NOTES
----------	--	-------



Sales contacts

General: commercial@klefer.com

www.klefer.gr