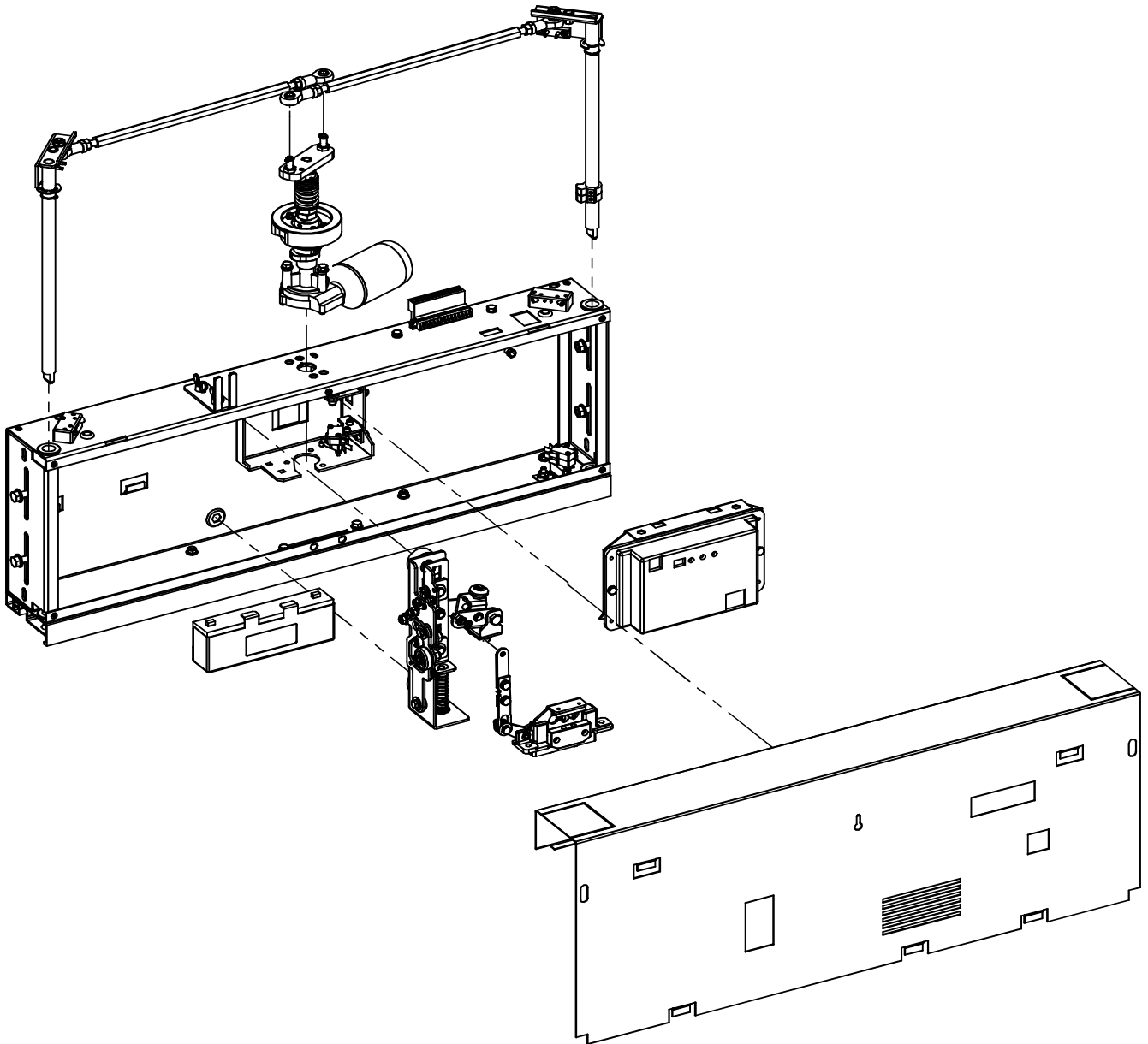


G5 SPARE PARTS

Automatic folding car door



Multimedia design and production by Klefer.

Klefer, S.A.
Kilkis business park.
61100 GR.
Greece.
Hellenic Business Registry No: 14504535000.



- Spare part in stock: Available with a minimal period of delivery.



- Spare parts to be manufactured: Need to be fabricated and therefore requires a longer delivery period.

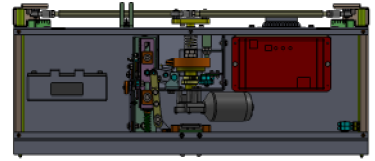
Klefer reserves the right to modify the specification and price of the products in this catalogue without prior notice.

Rate revision according version.
The rates are valid except for typographical mistakes.
The price of packaging is not included.
IVA or VAT not included.

1.1

DOOR OPERATOR

Traction parts



G5



Motor



Electronic board F1

Code

CMT.RPL.GKE01

Description

Motor with thermal protection. 24 V.

Electronic board FDC-01

Code

CMT.GKE02

Description

Motor with thermal protection. 24 V.

G5



Panel rotating bracket



Code

G5.139585

Description

E:550.

G5.139587

E:600.

G5.139588

E:650.

G5.139589

E:700.

G5.139590

E:750.

G5.139591

E:800.

G5.139592

E:850.

G5.139593

E:900.

G5.139595

E:950.

G5.139596

E:1000.

G5



Panel rotating shaft



Code

G5.139237

Description

Left.

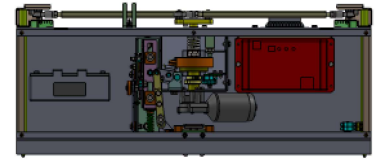
G5.139233

Right.

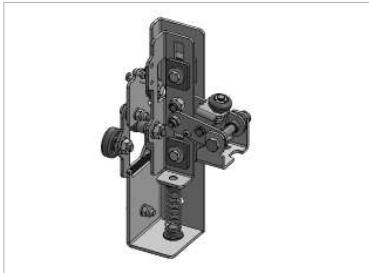
1.2

DOOR OPERATOR

Acting parts



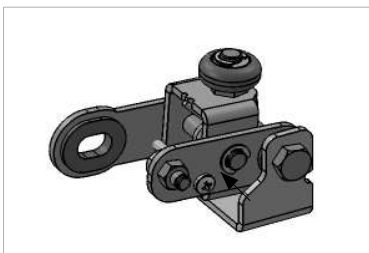
G5 Car door lock base assembly



Code
G5.K1997

Description
Car door lock base assembly.

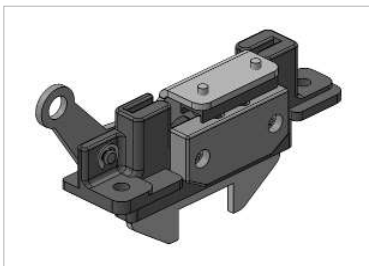
G5 Car door lock clutch assembly



Code
G5.K1993

Description
Car door lock clutch assembly.

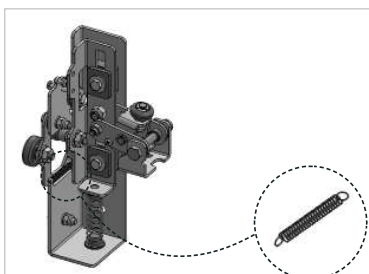
G5 Car door lock panel locking assembly



Code
G5.141459

Description
Car door lock panel locking assembly.

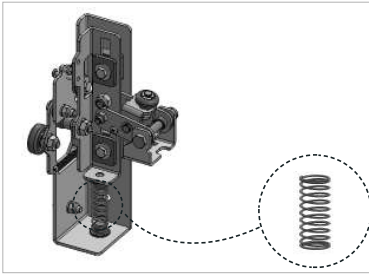
G5 Cam bracket spring



Code
G5.138102

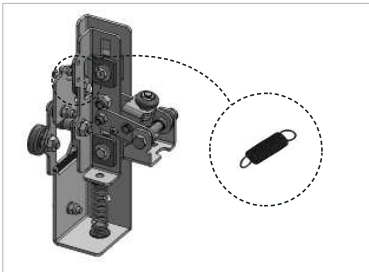
Description
Bracket spring.

G5  **Vertical guide spring**



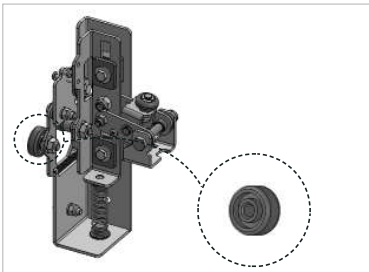
| Code | Description |
|-----------|------------------------|
| G5.138103 | Vertical guide spring. |

G5  **Vertical guide locking spring**



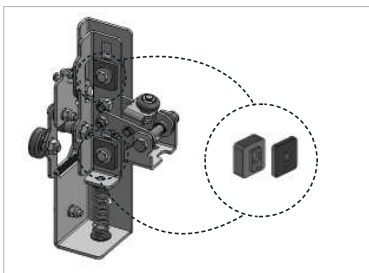
| Code | Description |
|-----------|--------------------------------|
| G5.138104 | Vertical guide locking spring. |

G5  **Cam bracket wheel**



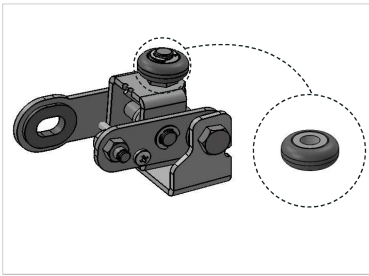
| Code | Description |
|-----------|--------------------|
| G5.139174 | Cam bracket wheel. |

G5  **Vertical guide support**



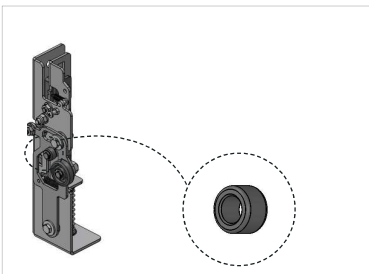
| Code | Description |
|-----------|-------------------------|
| G5.139173 | Vertical guide support. |

G5 |  **Clutch wheel**



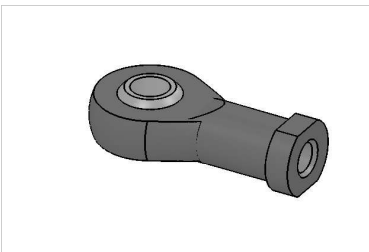
| Code | Description |
|-----------|---------------|
| G5.139175 | Clutch wheel. |

G5 |  **Cam bracket guiding wheel**



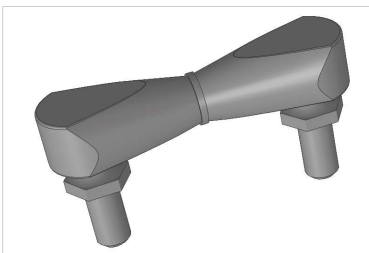
| Code | Description |
|-----------|----------------------------|
| G5.139180 | Cam bracket guiding wheel. |

G5 |  **Ball joint**



| Code | Description |
|-----------------|---|
| G3.505003.1050* | Ball Joint. Left & Right.. *Common for G5 & G3 |

G5 |  **Assembled ball joint**



| Code | Description |
|-----------|--------------|
| G5.139973 | Angle joint. |

G5  **Lateral bushing**



| Code | Description |
|----------|--------------------|
| G5.52695 | Ø 28 mm. L: 10 mm. |

G5  **Cam**



| Code | Description |
|----------------|--------------------------|
| CLA.RLG5.PD000 | Lateral retractable cam. |

G5  **Egress device**

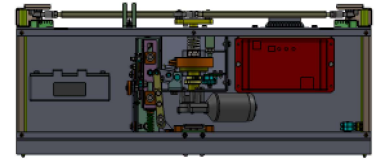


| Code | Description |
|----------------|----------------------|
| KDM.G5.NV.2000 | Pit egress. CH:2000. |
| KDM.G5.NV.2100 | Pit egress. CH:2100. |

1.3

DOOR OPERATOR

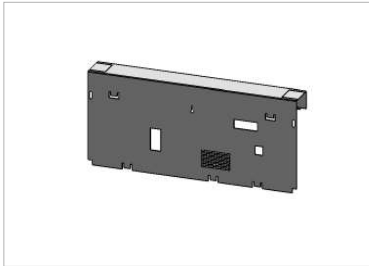
Carriages



G5



Operator cover



Electronic board F1

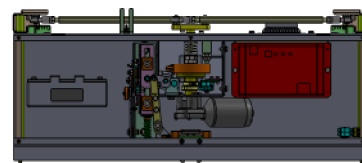
| Code | Description |
|-----------|-------------|
| G5.140071 | E:550. |
| G5.139762 | E:600. |
| G5.139044 | E:650. |
| G5.139842 | E:700. |
| G5.138985 | E:750. |
| G5.140112 | E:800. |
| G5.138986 | E:850. |
| G5.138987 | E:900. |
| G5.140603 | E:950. |
| G5.139763 | E:1000. |

Electronic board FDC-01

| Code | Description |
|-----------|-------------|
| G5.170873 | E:550. |
| G5.170874 | E:600. |
| G5.170875 | E:650. |
| G5.170877 | E:700. |
| G5.170878 | E:750. |
| G5.170880 | E:800. |
| G5.170881 | E:850. |
| G5.170883 | E:900. |
| G5.170884 | E:950. |
| G5.170885 | E:1000. |

2

ACCESSORIES

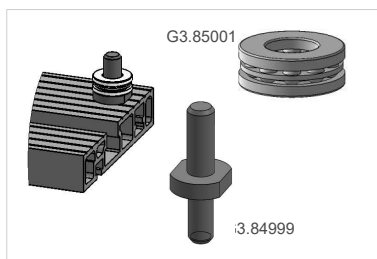


G5 Sill



| Code | Description |
|--------------|-------------|
| Upper | |
| G5.140068 | E:550. |
| G5.139751 | E:600. |
| G5.138969 | E:650. |
| G5.139845 | E:700. |
| G5.138970 | E:750. |
| G5.140110 | E:800. |
| G5.138975 | E:850. |
| G5.138976 | E:900. |
| G5.140601 | E:950. |
| G5.139752 | E:1000. |
| Lower | |
| G5.140070 | E:550. |
| G5.139753 | E:600. |
| G5.138979 | E:650. |
| G5.139844 | E:700. |
| G5.138982 | E:750. |
| G5.140111 | E:800. |
| G5.138983 | E:850. |
| G5.138984 | E:900. |
| G5.140602 | E:950. |
| G5.139754 | E:1000. |

G5 Sill accessory

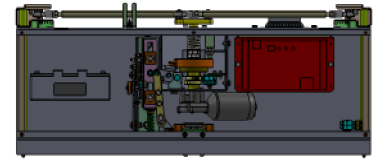


| Code | Description |
|-----------|--------------------------|
| G3.85001* | Thrust bearing. |
| G3.84999* | Panel support pin (Set). |

*Common for G5 & G3

3

PANELS



G5 Aluminium profile



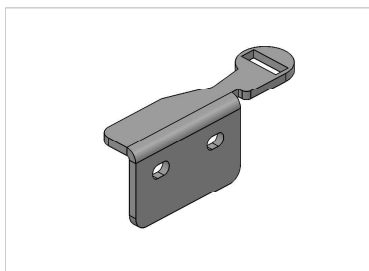
| Code | Description |
|-----------|-----------------|
| G5.138897 | CH:2000. Left. |
| G5.143833 | CH:2100. Left. |
| G5.138896 | CH:2000. Right. |
| G5.143832 | CH:2100. Right. |

G5 Handle



| Code | Description |
|-----------|--|
| G3.60305* | Handle for Klefer panels. *Common for G5 & G3 |

G5 Hinge reinforcement



| Code | Description |
|---------------|---|
| G5.138936.SET | Operating panel hinge reinforcement. Right & Left. E:750. |

G5



Folding panel guide shoe



Code

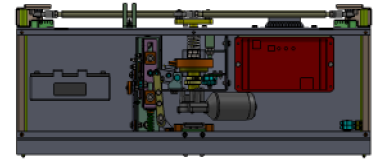
G5.506011

Description

Guide shoes. Upper & lower. (4pcs).

4

ELECTRONIC COMPONENTS



G5 Electrical wiring



Electronic board F1

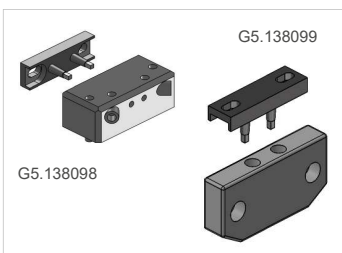
| Code | Description |
|-----------|---|
| G5.141050 | 14-pin connector wirement. E: 550-650. |
| G5.139116 | 14-pin connector wirement. E: 700-1000. |
| G5.139115 | Electric contact wirement. E: 550-650. |
| G5.139112 | Electric contact wirement. E: 700-850. |
| G5.139114 | Electric contact wirement. E: 900-1000. |
| G5.82780 | Infringement micro-switch wirement. |
| G5.140974 | Terminal switch wirement. E: 550-650. |
| G5.82777 | Terminal switch wirement. E: 700-1000. |
| G3.57843* | Battery wirement. E: 550-650. |
| G5.139117 | Battery wirement. E: 700-1000. |

*Common for G5 & G3

Electronic board FDC-01

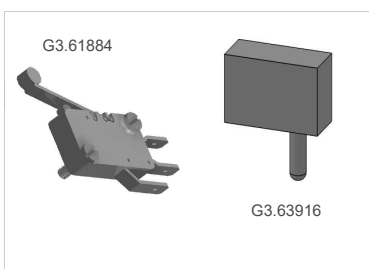
| Code | Description |
|-----------|---|
| G5.141050 | 14-pin connector wirement. E: 550-650. |
| G5.139116 | 14-pin connector wirement. E: 700-1000. |
| G5.82780 | Infringement micro-switch wirement. |
| G5.140974 | Terminal switch wirement. E: 550-650. |
| G5.82777 | Terminal switch wirement. E: 700-1000. |
| G5.168579 | Wiring electronic board FDC-01 |

G5 Electrical contact kit



| Code | Description |
|-----------|---|
| G5.138099 | Electric contact ASTRAAS 010 A & PA 02. |
| G5.138098 | Electric contact ASTRAAS 03 A2 & PA 02. |

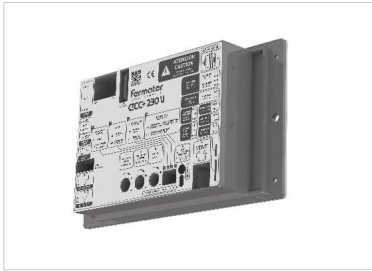
G5 Terminal switch



| Code | Description |
|-----------|---------------------------|
| G3.61884* | Terminal switch. |
| G3.63916* | Infringement microswitch. |

*Common for G5 & G3

G5 |  **Electronic module**



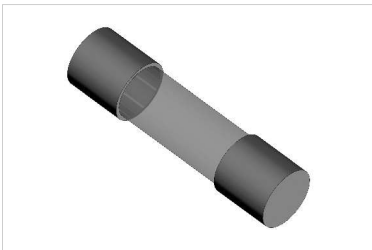
| Code | Description |
|--------------|---|
| G5.157696 | Electronic board FDC-01. Greek-English. |
| G5.RPL.70455 | Electronic board FDC-01. Greek-English (electronic board F1 replacement). |

G5 |  **Battery**



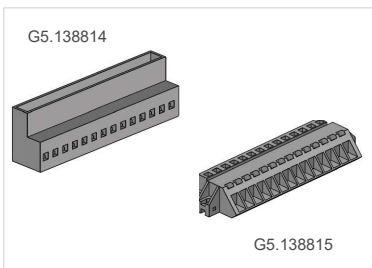
| Code | Description |
|-----------|-----------------------------------|
| G3.52273* | 12 V. 2 A. *Common for G5 & G3 |

G5 |  **Fuse**



| Code | Description |
|------------|--|
| G3.63194* | Ceramic fuse 2 A (electronic board F1) |
| G3.167703* | Ceramic fuse 3.15 A (electronic board FDC-01) |
| G3.167704* | Ceramic fuse 10 A (electronic board FDC-01) *Common for G5 & G3 |

G5 |  **Connector**



| Code | Description |
|-----------|---------------------------|
| G5.138814 | 14-pin connector, male. |
| G5.138815 | 14-pin connector, female. |



Sales contacts

General: commercial@klefer.com

www.klefer.com